

## PRODUCT DATASHEET

**LAWN LIGHT**  
**HYD-L03-K12A-20W 3000K**



---

### Application

- Courtyard
- Plaza
- Park
- Pedestrian street
- Meadow

---

### Benefits

- energy saving and environmental protection
- Low power, high light efficiency
- IP65 is water and dust resistant to harsh environment
- Lawn lights decorate the outdoor space to enhance high outdoor comfort

---

### Features

- Seiko aluminum, rust and corrosion resistant
- The lighting facilities around the lawn are important landscape facilities, and the installation method is also simple
- High light transmission mask ensures uniform light and reduces the lighting environment in dark areas

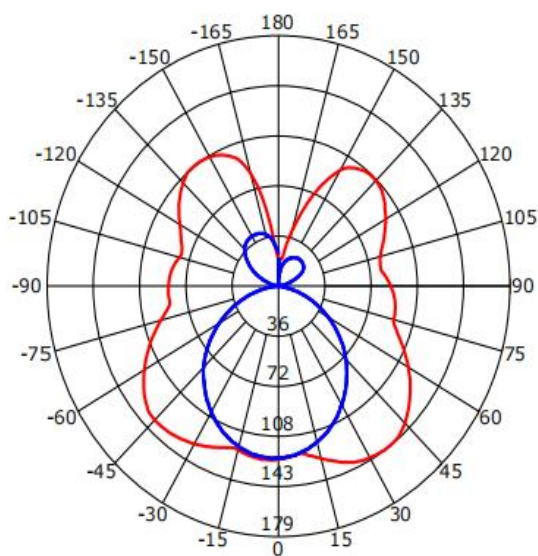
## Electrical Data

|                               |            |
|-------------------------------|------------|
| Nominal wattage (W)           | <b>20W</b> |
| Nominal Voltage (V)           | 220-240V   |
| Mains Frequency (Hz)          | 50         |
| Nominal Current (mA)          | 162        |
| Power Factor $\lambda$        | 0.6        |
| Total harmonic distortion (%) | ...        |
| Operating mode                | Built in   |

## Photometrical data

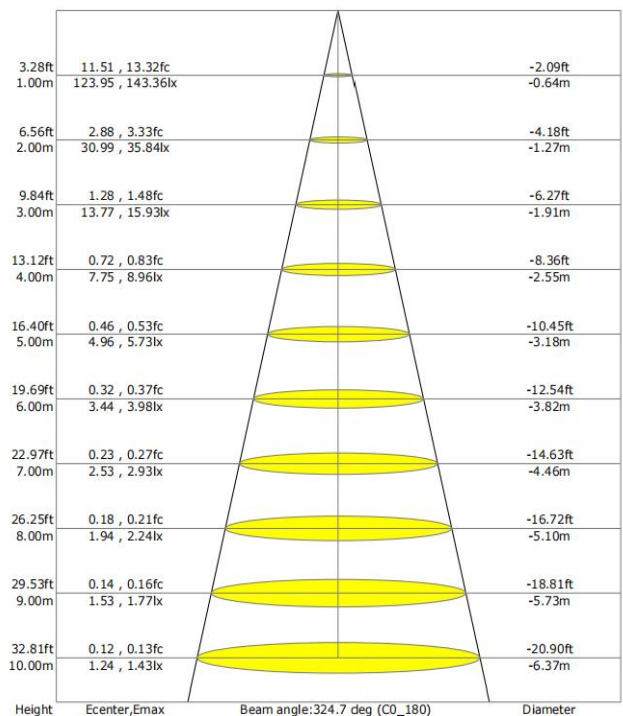
|                                      |                            |
|--------------------------------------|----------------------------|
| Luminous flux $\pm 10\%$ (lm)        | 913 lm                     |
| Luminous efficacy                    | 46 lm/w                    |
| Color temperature                    | <b>3000K</b>               |
| Light color (designation)            | Warm White                 |
| Color rendering index Ra             | $\geq 80$                  |
| Standard deviation of color matching | $\leq 5$ SDCM              |
| Luminous intensity/cd                | 143                        |
| Flickering                           | Flicker free               |
| Beam angle                           | C0-180,325 ° C90-270,107 ° |

Luminous Intensity Distribution Curve



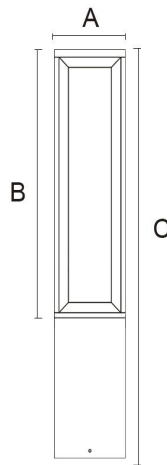
Beam Angle(50%) C0-180,C90-270: 324.7 deg,107.2 deg

C0-180 — C90-270



## Dimensions & Weight

|                    |     |
|--------------------|-----|
| Diameter (mm)/A    | 150 |
| Height (mm)/C      | 600 |
| Product weight (g) | ... |



## Material & Colors

|                 |                           |
|-----------------|---------------------------|
| Product color   | Black housing / White LGP |
| Housing color   | Black                     |
| Body material   | Aluminum                  |
| Cover material  | PC                        |
| Mercury content | 0.0 mg                    |

## Application & Mounting

|                              |                 |
|------------------------------|-----------------|
| Ambient temperature range    | -10°C~+40 °C    |
| Temperature range at storage | -10°C~+40 °C    |
| Type of connection           | Screw terminal  |
| Type of protection           | IP65            |
| Dimmable                     | No              |
| Mounting type                | Surface mounted |
| Mounting location            | Ground/Lawn     |
| Application environment      | Outdoor         |
| Cut size (mm)                | No              |
| LED module replaceable       | Not replaceable |
| With light source            | Yes             |

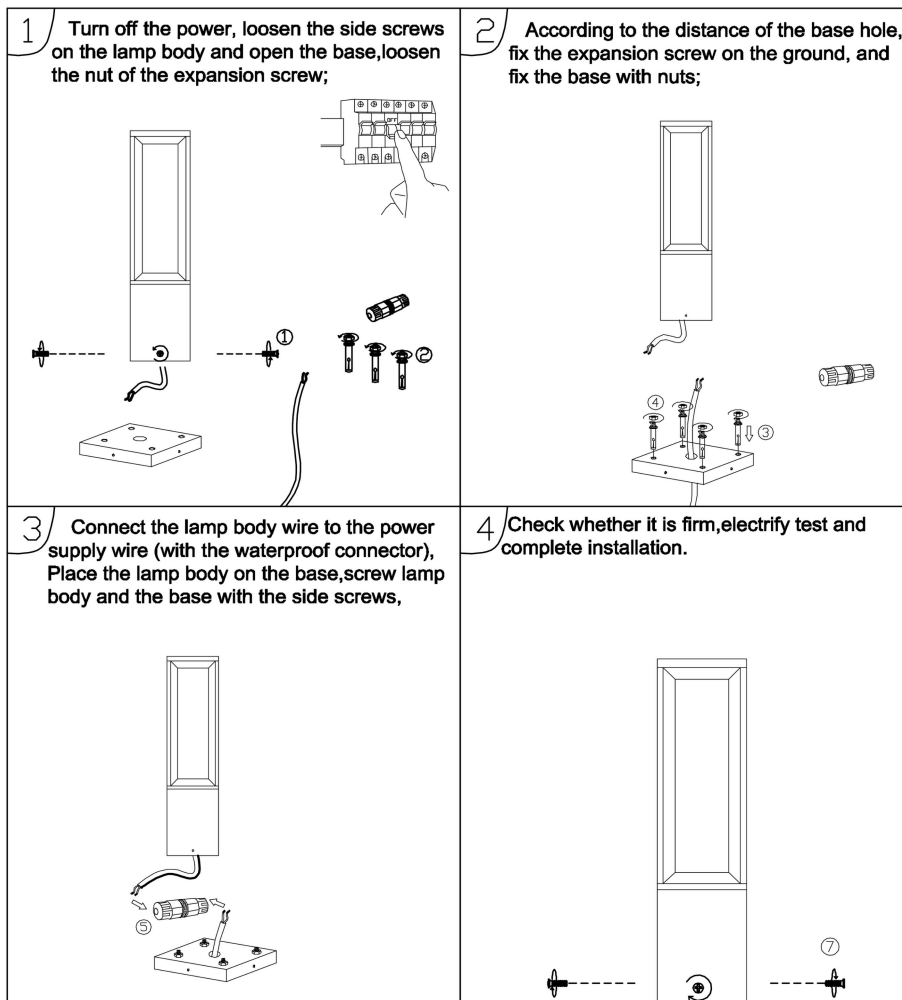
## Certificates & Lifespan

|              |                 |
|--------------|-----------------|
| Life (h)     | 30,000          |
| Certificates | CB LVD EMC RoHS |
| Standards    | ISO9001:2015    |

## Logistical Data

| Product code     | Dimensions (L*W*H) | Pcs/ carton | G.W. kg | Volume CBM |
|------------------|--------------------|-------------|---------|------------|
| HYD-L03-K12A-20W | 36*36*65 cm        | 4           | ...     | 0.08424    |

## Installation Method



## Disclaimer

Subject to change without notice. Errors and omission excepted. Always make sure to use the most recent release