

## PRODUCT DATASHEET

### RECESSED PANEL LIGHT HYD-104B-40W 3K/4K/6K



---

#### Application

- Office
- Kitchen
- Rest room
- Corridor
- Shop

---

#### Benefits

- Flicker free.
- The light is soft and bright
- Drive stable,safe and reliable
- High light transmission mask to ensure uniform light

---

#### Features

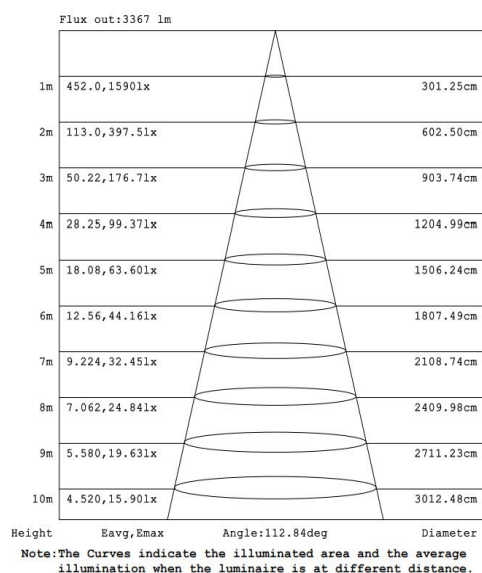
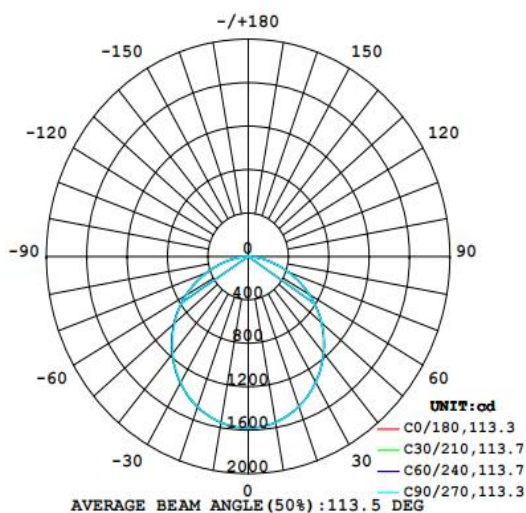
- Efficient and durable
- Easy and quick installation
- Light body thin design, reduce space occupancy
- Die-cast aluminum body for better heat dissipation, anti-corrosion, and easy maintain

## Electrical Data

Nominal wattage (W)	<b>40W</b>
Nominal Voltage (V)	220-240V
Mains Frequency (Hz)	50/60
Nominal Current (mA)	179
LED Driver Current (mA)	900
LED Driver Voltage (VDC)	24-42
LED Driver Efficiency (%)	89%
Power Factor $\lambda$	0.9
Total harmonic distortion (%)	<10%
Operating mode	External LED driver

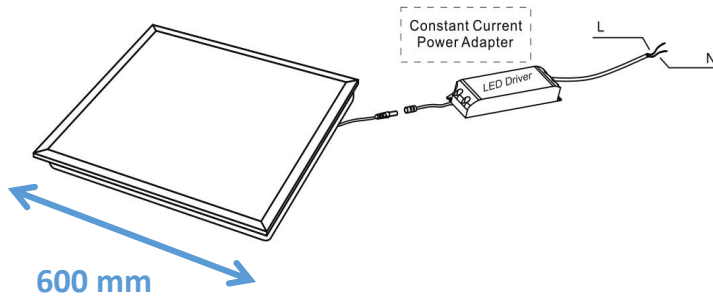
## Photometrical data

Luminous flux ±10% (lm)	3596.4	3996	4529
Luminous efficacy	89.91	99.9	111
Color temperature	<b>3000K</b>	<b>4000K</b>	<b>6000K</b>
Light color (designation)	Warm White	Nature White	Cold White
Color rendering index Ra	≥80		
Standard deviation of color matching	≤5 SDCM		
UGR	<19		
Luminous intensity/cd	1580		
Flickering	Flicker free		
Beam angle	114 °		



## Dimensions & Weight

Diameter (mm)	600*600
Height (mm)	32
Product weight (g)	...



## Material & Colors

Product color	All White
Housing color	White
Body material	Iron
Cover material	PS diffuser material and PMMA lens
Mercury content	0.0 mg

## Application & Mounting

Ambient temperature range	-10°C~+40 °C
Temperature range at storage	-10°C~+40 °C
Type of connection	Screwless terminal
Type of protection	IP20
Dimmable	No
Mounting type	Recessed mounted
Mounting location	Ceiling
Application environment	Indoor
Cut size (mm)	/
LED module replaceable	Not replaceable
With light source	Yes

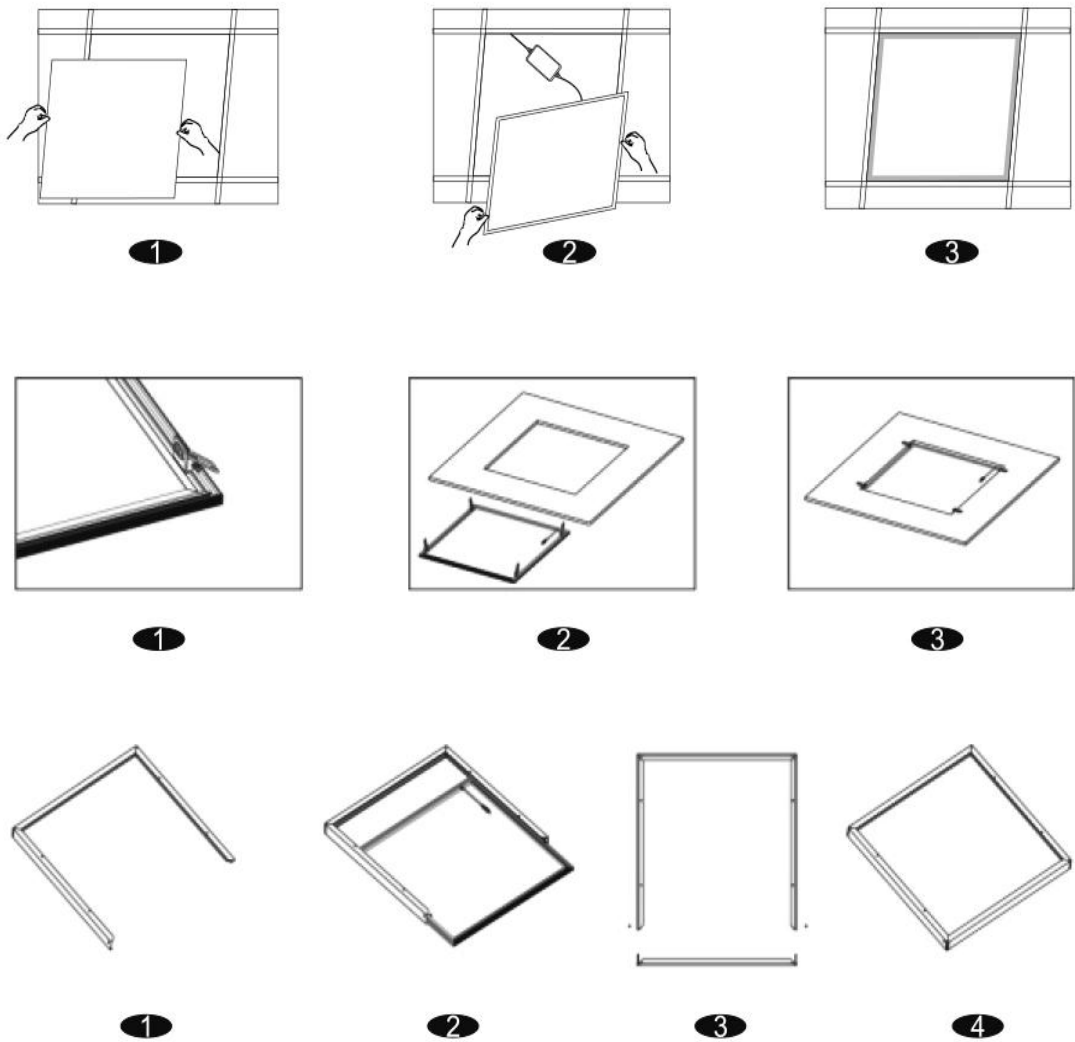
## Certificates & Lifespan

Life (h)	30,000
Certificates	CB LVD EMC RoHS
Standards	ISO9001:2015

**Logistical Data**

Product code	Dimensions (L*W*H)	Pcs/ carton	G.W. kg	Volume CBM
HYD-104B-40W	64.5*22*63 cm	5	...	0.08940

**Installation Method**



**Disclaimer**

Subject to change without notice. Errors and omission excepted. Always make sure to use the most recent release