

PRODUCT DATASHEET

RECESSED PANEL LIGHT HYD-104B-48W 6500K



Application

- Office
- Kitchen
- Rest room
- Corridor
- Shop

Benefits

- Flicker free.
- The light is soft and bright
- Drive stable,safe and reliable
- High light transmission mask to ensure uniform light

Features

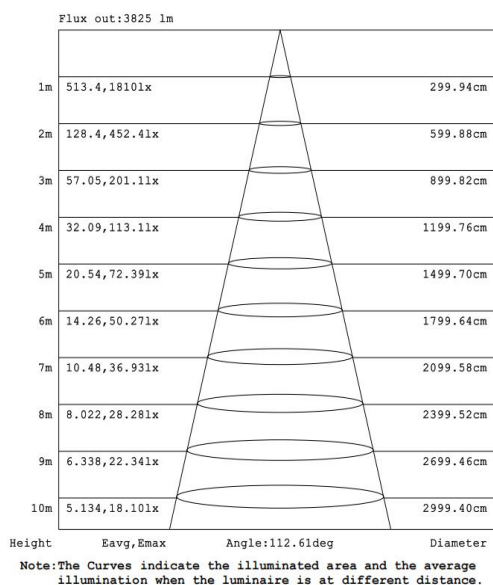
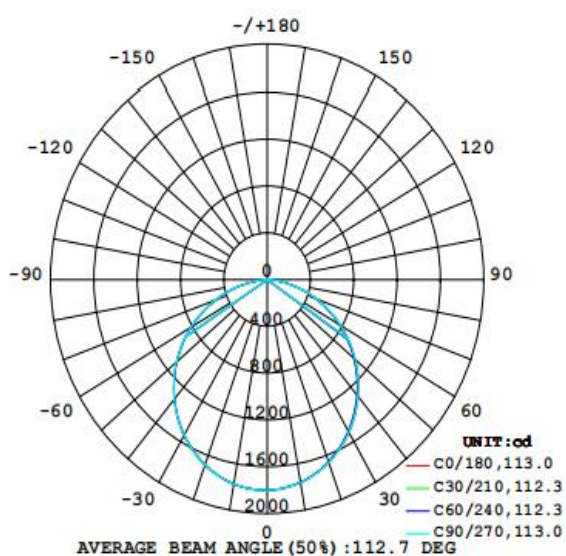
- Efficient and durable
- Easy and quick installation
- Light body thin design, reduce space occupancy
- Die-cast aluminum body for better heat dissipation, anti-corrosion, and easy maintain

Electrical Data

Nominal wattage (W)	48W
Nominal Voltage (V)	220-240V~
Mains Frequency (Hz)	50/60
Nominal Current (mA)	226
LED Driver Current (mA)	1200
LED Driver Voltage (VDC)	24-42V
LED Driver Efficiency (%)	88%
Power Factor λ	0.85C-0.95
Total harmonic distortion (%)	<10%
Operating mode	External LED driver

Photometrical data

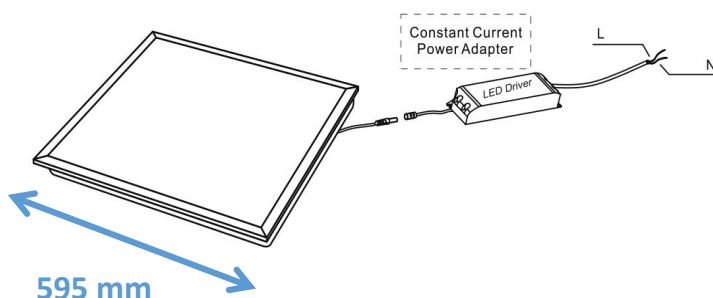
Luminous flux $\pm 10\%$ (lm)	5100 lm
Luminous efficacy	106 lm/w
Color temperature	6500K
Light color (designation)	Cold White
Color rendering index Ra	≥ 80
Standard deviation of color matching	≤ 5 SDCM
Luminous intensity/cd	1801
Flickering	Flicker free
Beam angle	113 °



6500K

Dimensions & Weight

Diameter (mm)	595*595
Height (mm)	32
Product weight (g)	...



Material & Colors

Product color	All White
Housing color	White
Body material	Iron
Cover material	PS diffuser material and PMMA lens
Mercury content	0.0 mg

Application & Mounting

Ambient temperature range	-10°C~+40 °C
Temperature range at storage	-10°C~+40 °C
Type of connection	Screwless terminal
Type of protection	IP20
Dimmable	No
Mounting type	Recessed mounted
Mounting location	Ceiling
Application environment	Indoor
Cut size (mm)	/
LED module replaceable	Not replaceable
With light source	Yes

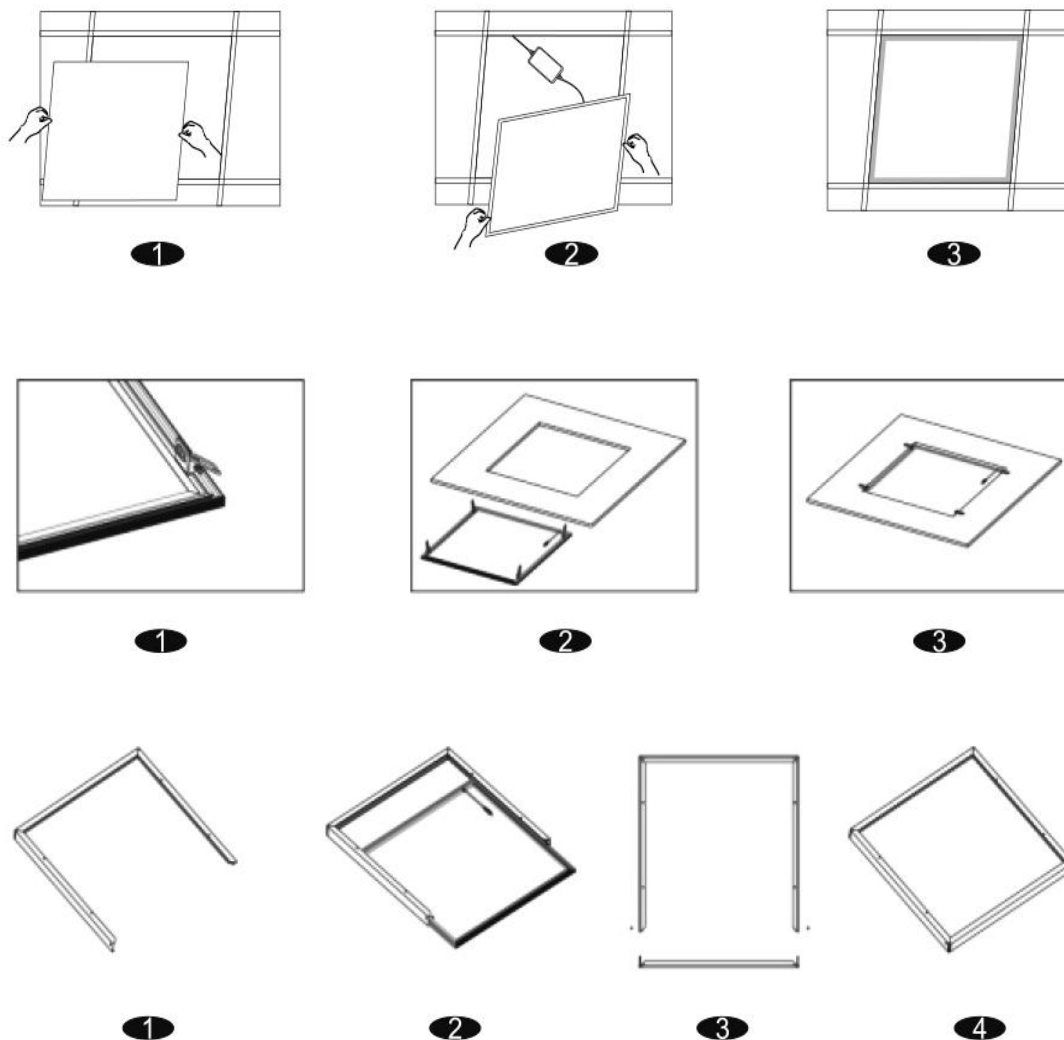
Certificates & Lifespan

Life (h)	30,000
Certificates	CB LVD EMC RoHS
Standards	ISO9001:2015

Logistical Data

Product code	Dimensions (L*W*H)	Pcs/ carton	G.W. kg	Volume CBM
HYD-104B-48W	64.5*22*63 cm	5	...	0.08940

Installation Method



Disclaimer

Subject to change without notice. Errors and omission excepted. Always make sure to use the most recent release