

## PRODUCT DATASHEET

### LINEAR LIGHT | HYD-T17-50W Ra>80 SDCM<5

High quality chip, low consumption and high brightness, precision aluminum, after many processes, not easy to deform

#### HYD-T17-50W



#### Areas of application

- Linear design for decorative lighting
- Office lighting, Commercial lighting, Home lighting
- Applicable scene: Office, Shopping mall, Corridor, Clothing store, Meeting room

#### Product benefits

- Linear lamp body to achieve geometric design, free splicing, decorating space
- It can be installed in various ways, such as ceiling, hoisting and embedding, to achieve rich light and shadow space design
- High light transmission PC lamp shade, luminous uniform bright, irradiation area is wide

#### Product features

- Warranty 5 years
- High quality LED chip, no stroboscopic, high light efficiency, energy saving
- Aluminum process, strong texture, wear resistance, corrosion resistance

## TECHNICAL DATA

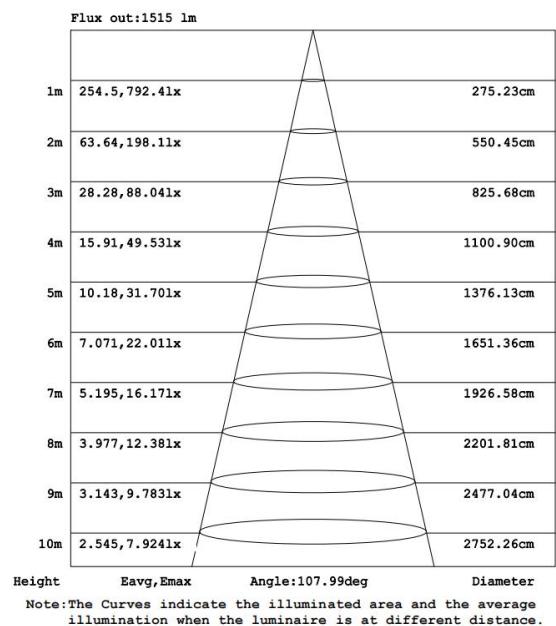
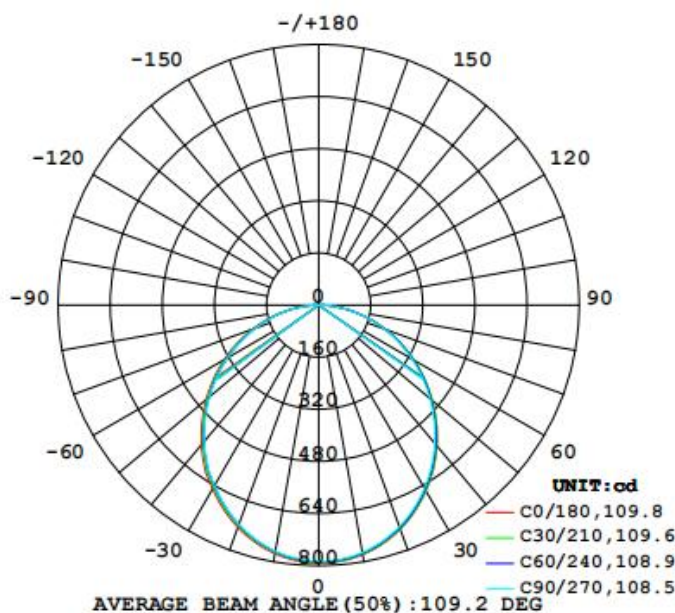
### Electrical data

Nominal wattage	50 W
Nominal voltage	220-240 V
Mains frequency	50/60 Hz
Power factor $\lambda$	0.9
Protection class	II
Operating mode	Built in

### Photometrical data

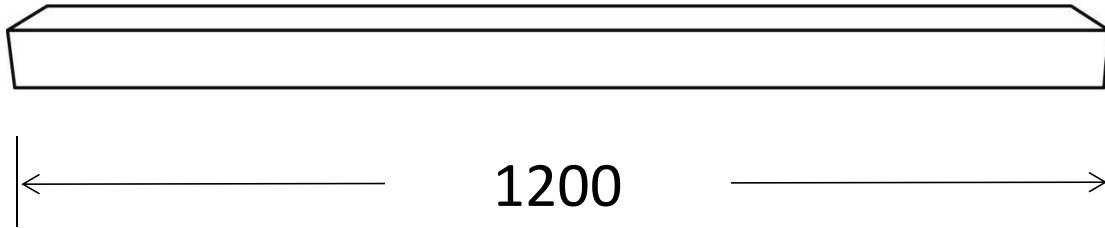
Luminous flux	2430	2700	3000
Luminous efficacy	48.6	54	60
Color temperature	3000K	4000K	6000K
Light color (designation)	Warm / Natural / Cold white		
Color rendering index Ra	Ra>80		
Standard deviation of color matching	<5 SDCM		
Luminous intensity/cd	793		
Low flicker	No		
Beam angle	109°		
UGR	<19		

### T17-50W-IES



## Dimensions & Weight D

Diameter	1200×50mm
Height	70 mm
Product weight	-



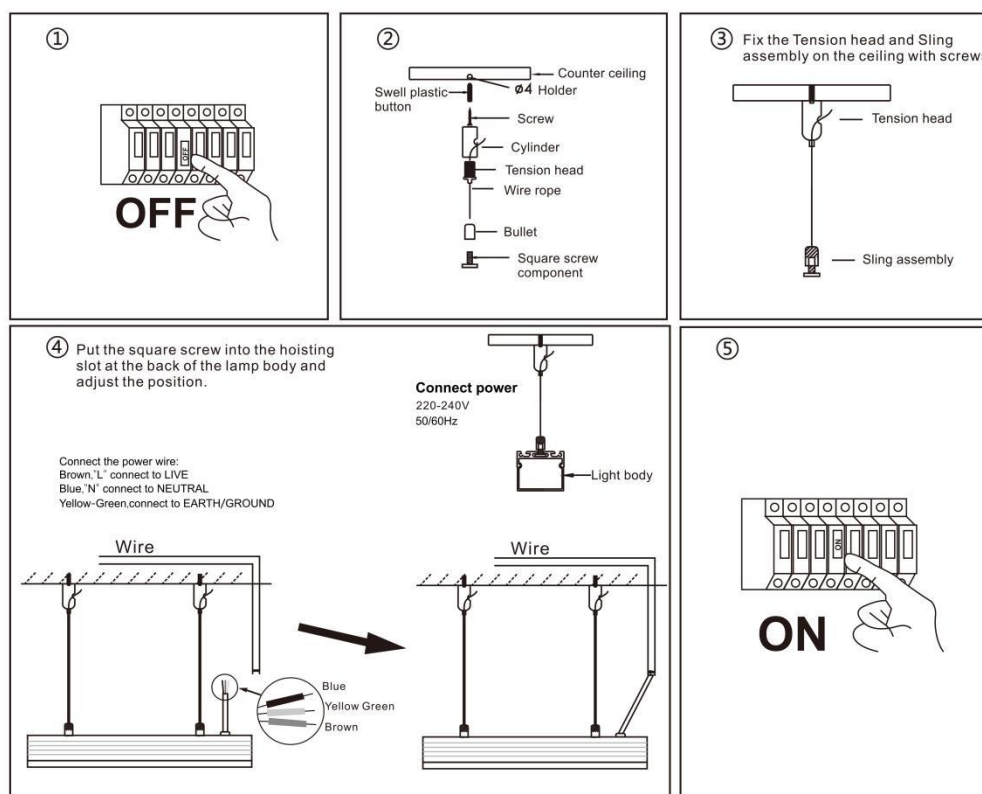
## Materials & Colors

Product color	Black
Housing color	Black
Body material	Aluminum
Cover material	Polycarbonate(PC)
Light emitting surface material	Polycarbonate(PC)
Mercury content	0.0mg

## Application & Mounting

Ambient temperature range	-20 - +45°C
Temperature range at storage	-25 - +60°C
Type of connection	Screwless terminal
Type of protection	IP20
Protection class IK (shock resistance)	-
Dimmable	No
Mounting type	Suspension/Surface mounted
Mounting location	Ceiling
Application environment	Indoor
Mounting diameter	1200×50×70 mm
Mounting depth	-
LED module replaceable	No
With light source	Yes

## Installation & Method



## Lifespan

Life time	> 50,000 h
Warranty	5 years

## Certificates & Standards

Standards	EMC(CE)	EN IEC 55015:2019 +A11:2020 EN IEC 61000-3-2:2019 +A1:2021 EN 61000-3-3+A1:2019+A2:2021 EN61547:2009
Lamp test report	LVD	IEC 60598-2-1:2020 IEC 60598-1:2020 IEC 60598-2-1:2021 IEC 60598-1:2021+A11:2022
	RoHS	2011/65/EU (EU)2015/863

## DISCLAIMER

Subject to change without notice. Errors and omission excepted. Always make sure to use the most recent release.