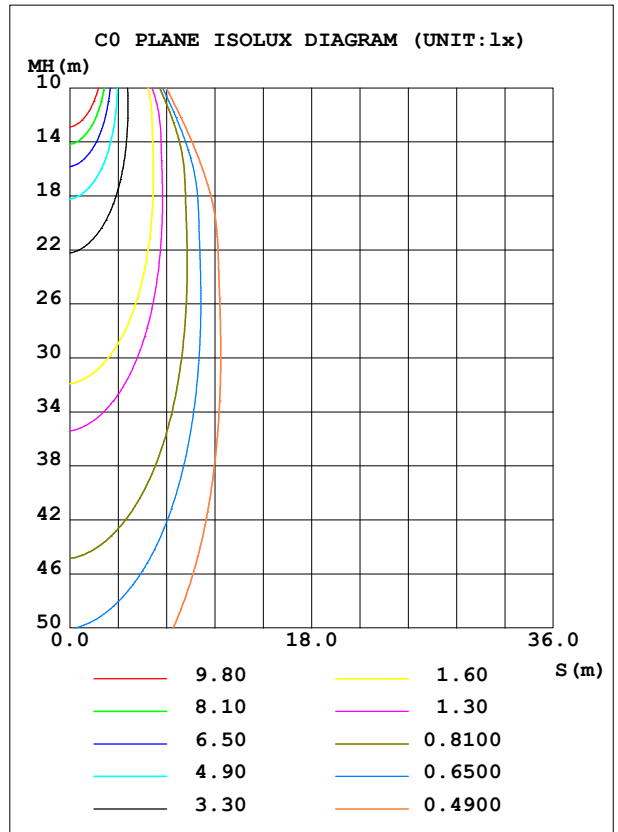
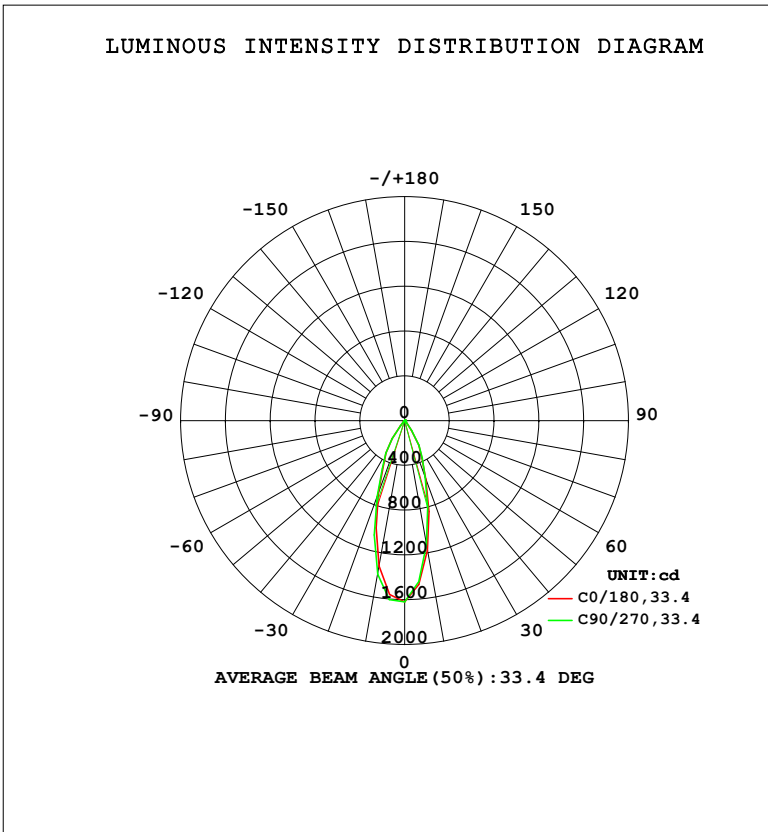


**LUMINAIRE PHOTOMETRIC TEST REPORT**

Test:U:220.38V I:0.0603A P:7.2475W PF:0.5452 Freq:50.00Hz Lamp Flux:741.433x1 lm		
NAME: 射灯	TYPE:	WEIGHT:
SPEC.:	DIM.:	SERIAL No.:
MFR.: EVERFINE	SUR.: 40.5mm	Shielding Angle:

DATA OF LAMP		PHOTOMETRIC DATA			
MODEL	216	Imax (cd)	1617	S/MH (C0/180)	0.58
NOMINAL POWER (W)	7	LOR (%)	100.0	S/MH (C90/270)	0.61
RATED VOLTAGE (V)	220	TOTAL FLUX (lm)	741.43	$\eta$ UP, DN (C0-180)	0.5, 45.0
NOMINAL FLUX (lm)	741.433	CIE CLASS	DIRECT	$\eta$ UP, DN (C180-360)	0.5, 54.0
LAMPS INSIDE	1	$\eta$ up (%)	1.1	CIBSE SHR NOM	0.50
TEST VOLTAGE (V)	219.5	$\eta$ down (%)	98.9	CIBSE SHR MAX	0.55



C Range: 0 - 360DEG  
 C Interval: 22.5DEG  
 Test Speed: HIGH  
 Temperature: 25.3°C  
 Operators: DAMIN  
 Test Date: 2023-11-10

$\gamma$  Range: 0 - 180DEG  
 $\gamma$  Interval: 5.0DEG  
 Test System: EVERFINE GO-2000B\_V1 SYSTEM V2.00.473  
 Humidity: 65.0%  
 Test Distance: 9.401m [K=1.0000]  
 Remarks:

ZONAL FLUX DIAGRAM

ZONAL FLUX DIAGRAM:

$\gamma$	C0	C45	C90	C135	C180	C225	C270	C315	$\gamma$	$\Phi$ zone	$\Phi$ total	%lum,lamp
10	1178	1115	1128	1207	1318	1402	1393	1277	0- 10	136.5	136.5	18.4,18.4
20	558.2	522.2	540.6	598.3	685.3	752.7	723.9	638.6	10- 20	256.4	393.0	53,53
30	252.2	233.7	257.8	299.0	333.0	348.1	339.7	296.2	20- 30	199.9	592.9	80,80
40	31.88	28.90	31.52	39.41	62.12	76.59	61.55	38.65	30- 40	98.83	691.7	93.3,93.3
50	14.46	13.98	13.93	14.72	15.40	15.23	14.64	14.81	40- 50	19.02	710.7	95.9,95.9
60	8.703	8.398	8.629	9.623	10.37	10.67	10.24	9.416	50- 60	10.93	721.7	97.3,97.3
70	5.028	5.338	5.676	5.832	5.783	5.574	4.910	4.800	60- 70	7.123	728.8	98.3,98.3
80	2.504	0.9679	0.1288	1.178	4.088	3.026	0.8063	2.503	70- 80	4.266	733.0	98.9,98.9
90	0.0001	0.0001	0.0002	0.0001	0.0060	0.0000	0.0061	0.0061	80- 90	0.5639	733.6	98.9,98.9
100	0	0	0	0	0.0299	0.0241	0.0182	0.0303	90-100	0.0077	733.6	98.9,98.9
110	0.1073	0.1200	0.1025	0.0542	0.1616	0.1386	0.1514	0.1876	100-110	0.0580	733.7	99,99
120	0.5074	0.5348	0.4949	0.4042	0.5564	0.5059	0.5385	0.6228	110-120	0.2986	734.0	99,99
130	1.320	1.388	1.322	1.147	1.382	1.283	1.325	1.469	120-130	0.7943	734.8	99.1,99.1
140	2.503	2.591	2.518	2.306	2.607	2.480	2.522	2.708	130-140	1.473	736.2	99.3,99.3
150	3.585	3.627	3.583	3.394	3.748	3.641	3.669	3.806	140-150	1.937	738.2	99.6,99.6
160	3.951	3.946	3.964	3.836	4.070	4.030	4.085	4.071	150-160	1.787	740.0	99.8,99.8
170	3.772	3.748	3.777	3.739	3.801	3.778	3.819	3.793	160-170	1.109	741.1	100,100
180	3.706	3.724	3.674	3.721	3.741	3.724	3.711	3.733	170-180	0.3570	741.4	100,100
DEG	LUMINOUS INTENSITY:cd									UNIT:lm		

Conical surface Flux(90deg): 703.84 lm

%lum = 94.9%

%lamp = 94.9%

Conical surface Flux(130deg): 725.66 lm

%lum = 97.9%

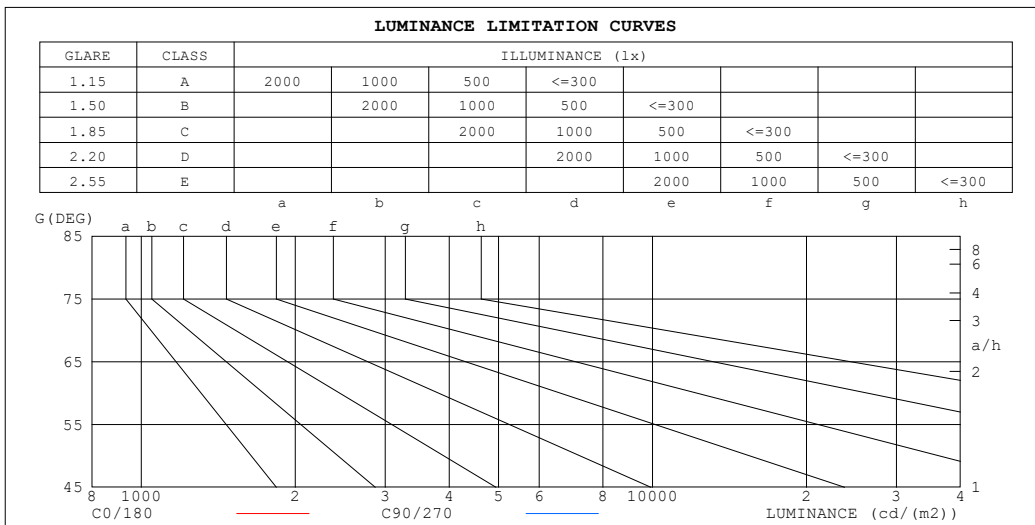
%lamp = 97.9%

C Range: 0 - 360DEG  
 C Interval: 22.5DEG  
 Test Speed: HIGH  
 Temperature:25.3°C  
 Operators:DAMIN  
 Test Date:2023-11-10

$\gamma$  Range: 0 - 180DEG  
 $\gamma$  Interval: 5.0DEG  
 Test System:EVERFINE GO-2000B\_V1 SYSTEM V2.00.473  
 Humidity:65.0%  
 Test Distance:9.401m [K=1.0000]  
 Remarks:

**LUMINANCE LIMITATION CURVES**

Test:U:220.38V I:0.0603A P:7.2475W PF:0.5452 Freq:50.00Hz Lamp Flux:741.433x1 lm		
NAME: 射灯	TYPE:	WEIGHT:
SPEC.:	DIM.:	SERIAL No.:
MFR.: EVERFINE	SUR.: 40.5mm	Shielding Angle:



LUMINANCE cd/(m2)		
G (DEG)	C0/180	C90/270
85	12	9
80	231	12
75	266	274
70	235	262
65	236	251
60	278	273
55	329	314
50	360	343
45	366	348

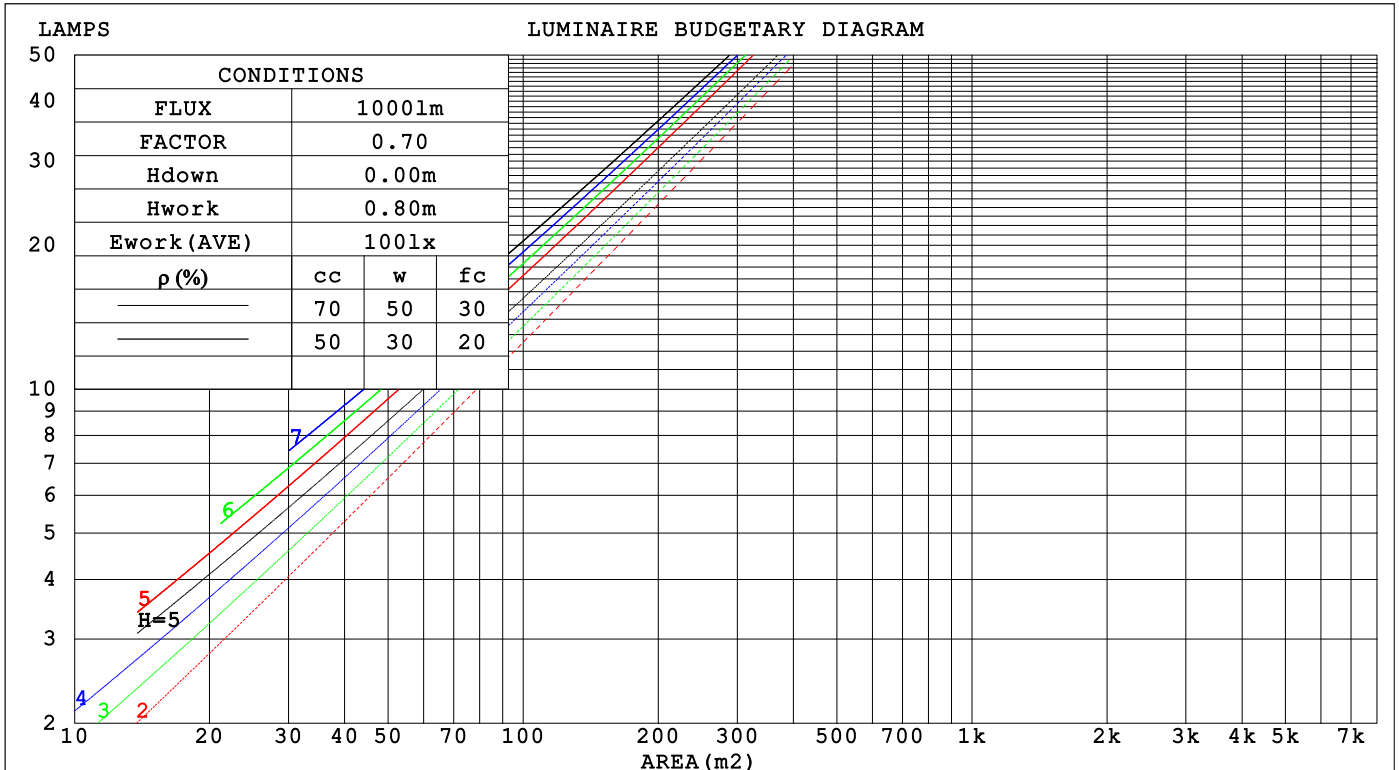
C Range: 0 - 360DEG  
 C Interval: 22.5DEG  
 Test Speed: HIGH  
 Temperature:25.3°C  
 Operators:DAMIN  
 Test Date:2023-11-10

γ Range: 0 - 180DEG  
 γ Interval: 5.0DEG  
 Test System:EVERFINE GO-2000B\_V1 SYSTEM V2.00.473  
 Humidity:65.0%  
 Test Distance:9.401m [K=1.0000]  
 Remarks:

CU AND LUMINAIRE BUDGETARY ESTIMATE DIAGRAM

Test:U:220.38V I:0.0603A P:7.2475W PF:0.5452 Freq:50.00Hz Lamp Flux:741.433x1 lm		
NAME: 射灯	TYPE:	WEIGHT:
SPEC.:	DIM.:	SERIAL No.:
MFR.: EVERFINE	SUR.: 40.5mm	Shielding Angle:

pcc	80%			70%			50%			30%			10%			0
pw	50%	30%	10%	50%	30%	10%	50%	30%	10%	50%	30%	10%	50%	30%	10%	0
pfc	20%			20%			20%			20%			20%			0
RCR	RCR:Room Cavity Ratio						Coefficients of Utilization(CU)									
0.0	1.19	1.19	1.19	1.16	1.16	1.16	1.11	1.11	1.11	1.06	1.06	1.06	1.01	1.01	1.01	.99
1.0	1.11	1.09	1.07	1.09	1.07	1.05	1.05	1.03	1.01	1.01	.99	.98	.97	.96	.95	.93
2.0	1.04	1.00	.97	1.02	.99	.96	.99	.96	.94	.96	.93	.91	.93	.91	.89	.88
3.0	.98	.93	.90	.96	.92	.89	.94	.90	.87	.91	.88	.86	.89	.86	.84	.83
4.0	.92	.87	.83	.91	.86	.83	.89	.85	.82	.87	.83	.81	.85	.82	.80	.78
5.0	.87	.82	.78	.86	.81	.78	.84	.80	.77	.83	.79	.76	.81	.78	.75	.74
6.0	.83	.77	.74	.82	.77	.73	.80	.76	.73	.79	.75	.72	.78	.74	.72	.70
7.0	.79	.73	.70	.78	.73	.69	.77	.72	.69	.76	.71	.68	.74	.71	.68	.67
8.0	.75	.70	.66	.74	.69	.66	.73	.69	.66	.72	.68	.65	.71	.68	.65	.64
9.0	.72	.66	.63	.71	.66	.63	.70	.66	.62	.69	.65	.62	.68	.65	.62	.61
10.0	.69	.63	.60	.68	.63	.60	.67	.63	.60	.66	.62	.59	.66	.62	.59	.58



C Range: 0 - 360DEG  
 C Interval: 22.5DEG  
 Test Speed: HIGH  
 Temperature:25.3°C  
 Operators:DAMIN  
 Test Date:2023-11-10

γ Range: 0 - 180DEG  
 γ Interval: 5.0DEG  
 Test System:EVERFINE GO-2000B\_V1 SYSTEM V2.00.473  
 Humidity:65.0%  
 Test Distance:9.401m [K=1.0000]  
 Remarks:

WEC AND CCEC

Test:U:220.38V I:0.0603A P:7.2475W PF:0.5452 Freq:50.00Hz Lamp Flux:741.433x1 lm		
NAME: 射灯	TYPE:	WEIGHT:
SPEC.:	DIM.:	SERIAL No.:
MFR.: EVERFINE	SUR.: 40.5mm	Shielding Angle:

$\rho_{CC}$	80%			70%			50%			30%			10%			0
$\rho_w$	50%	30%	10%	50%	30%	10%	50%	30%	10%	50%	30%	10%	50%	30%	10%	0
$\rho_{fc}$	20%			20%			20%			20%			20%			0
RCR	RCR:Room Cavity Ratio						Wall Exitance Coefficients (WEC)									
0.0																
1.0	.169	.096	.030	.162	.092	.029	.149	.085	.027	.137	.079	.025	.125	.073	.023	
2.0	.160	.087	.027	.154	.085	.026	.143	.079	.025	.132	.074	.023	.123	.070	.022	
3.0	.151	.080	.024	.146	.078	.023	.136	.074	.022	.127	.070	.021	.119	.066	.020	
4.0	.142	.074	.022	.138	.072	.021	.130	.069	.021	.122	.066	.020	.115	.063	.019	
5.0	.135	.069	.020	.131	.067	.020	.124	.065	.019	.117	.062	.018	.111	.059	.018	
6.0	.128	.064	.018	.125	.063	.018	.119	.061	.018	.113	.059	.017	.107	.057	.017	
7.0	.122	.060	.017	.119	.059	.017	.114	.057	.017	.108	.056	.016	.104	.054	.016	
8.0	.116	.057	.016	.114	.056	.016	.109	.054	.016	.104	.053	.015	.100	.051	.015	
9.0	.111	.054	.015	.109	.053	.015	.105	.052	.015	.101	.050	.014	.097	.049	.014	
10.0	.107	.051	.014	.105	.051	.014	.101	.049	.014	.097	.048	.014	.093	.047	.013	

$\rho_{CC}$	80%			70%			50%			30%			10%			0
$\rho_w$	50%	30%	10%	50%	30%	10%	50%	30%	10%	50%	30%	10%	50%	30%	10%	0
$\rho_{fc}$	20%			20%			20%			20%			20%			0
RCR	RCR:Room Cavity Ratio						Ceiling Cavity Exitance Coefficients (CCEC)									
0.0	.199	.199	.199	.170	.170	.170	.116	.116	.116	.067	.067	.067	.021	.021	.021	
1.0	.179	.165	.154	.153	.142	.132	.105	.098	.091	.060	.057	.053	.019	.018	.017	
2.0	.163	.141	.122	.139	.121	.106	.096	.084	.074	.055	.049	.043	.018	.016	.014	
3.0	.150	.122	.099	.128	.105	.086	.088	.073	.060	.051	.043	.036	.016	.014	.012	
4.0	.139	.107	.082	.119	.092	.072	.082	.064	.050	.047	.038	.030	.015	.012	.010	
5.0	.129	.095	.070	.111	.082	.061	.077	.057	.043	.044	.034	.025	.014	.011	.008	
6.0	.122	.086	.060	.104	.074	.052	.072	.052	.037	.042	.031	.022	.013	.010	.007	
7.0	.115	.078	.052	.099	.067	.045	.068	.047	.032	.040	.028	.019	.013	.009	.006	
8.0	.109	.071	.046	.094	.062	.040	.065	.044	.028	.038	.026	.017	.012	.008	.006	
9.0	.103	.066	.041	.089	.057	.036	.062	.040	.025	.036	.024	.015	.012	.008	.005	
10.0	.099	.062	.037	.085	.054	.032	.059	.038	.023	.034	.022	.014	.011	.007	.005	

C Range: 0 - 360DEG  
 C Interval: 22.5DEG  
 Test Speed: HIGH  
 Temperature:25.3°C  
 Operators:DAMIN  
 Test Date:2023-11-10

$\gamma$  Range: 0 - 180DEG  
 $\gamma$  Interval: 5.0DEG  
 Test System:EVERFINE GO-2000B\_V1 SYSTEM V2.00.473  
 Humidity:65.0%  
 Test Distance:9.401m [K=1.0000]  
 Remarks:

**UGR(Unified Glare Rating) Table**

Test:U:220.38V I:0.0603A P:7.2475W PF:0.5452 Freq:50.00Hz										
Lamp Flux:741.433x1 lm										
NAME: 射灯			TYPE:				WEIGHT:			
SPEC.:			DIM.:				SERIAL No.:			
MFR.: EVERFINE			SUR.: 40.5mm				Shielding Angle:			
ceiling/cavity	0.7	0.7	0.5	0.5	0.3	0.7	0.7	0.5	0.5	0.3
walls	0.5	0.3	0.5	0.3	0.3	0.5	0.3	0.5	0.3	0.3
working plane	0.2	0.2	0.2	0.2	0.2	0.2	0.2	0.2	0.2	0.2
Room dimensions	Viewed crosswise					Viewed endwise				
x = 2H y = 2H	4.0	4.8	4.2	5.0	5.2	4.1	4.9	4.3	5.1	5.3
3H	4.6	5.3	4.8	5.6	5.8	4.9	5.7	5.2	5.9	6.1
4H	5.0	5.7	5.3	6.0	6.2	5.3	6.1	5.6	6.3	6.5
6H	5.3	6.0	5.6	6.2	6.5	5.2	5.9	5.5	6.2	6.4
8H	5.2	5.9	5.6	6.2	6.5	5.2	5.9	5.5	6.1	6.4
12H	5.2	5.8	5.5	6.1	6.4	5.1	5.8	5.5	6.1	6.4
4H 2H	4.1	4.8	4.4	5.1	5.3	4.1	4.9	4.4	5.1	5.4
3H	5.0	5.6	5.3	5.9	6.2	5.4	6.0	5.7	6.3	6.6
4H	5.6	6.1	5.9	6.5	6.8	5.8	6.4	6.2	6.7	7.0
6H	5.9	6.4	6.3	6.8	7.2	5.7	6.2	6.1	6.6	6.9
8H	5.9	6.4	6.3	6.7	7.1	5.7	6.1	6.1	6.5	6.9
12H	5.8	6.3	6.2	6.7	7.1	5.6	6.0	6.0	6.4	6.8
8H 4H	5.7	6.1	6.1	6.5	6.9	5.9	6.3	6.3	6.7	7.1
6H	6.0	6.4	6.5	6.8	7.3	5.7	6.1	6.2	6.6	7.0
8H	6.0	6.3	6.4	6.8	7.2	5.7	6.0	6.2	6.5	6.9
12H	5.9	6.2	6.4	6.7	7.2	5.6	5.9	6.1	6.4	6.9
12H 4H	5.6	6.0	6.0	6.4	6.8	5.8	6.3	6.2	6.6	7.1
6H	6.0	6.3	6.4	6.8	7.2	5.7	6.1	6.2	6.5	7.0
8H	5.9	6.2	6.4	6.7	7.2	5.6	5.9	6.1	6.4	6.9
Variations with the observer position at spacings(CIE Pub.117):										
S = 1.0H	+ 0.6 / - 0.8					+ 0.7 / - 1.1				
1.5H	+ 0.9 / - 0.5					+ 0.8 / - 1.4				
2.0H	+ 0.6 / - 1.1					+ 1.1 / - 2.5				

CIE Pub.117, 741.4 lm Total Lamp Luminous Flux Correct (8log(F/F0) = -1.0)  
 Area: 0.063 m2

C Range: 0 - 360DEG  
 C Interval: 22.5DEG  
 Test Speed: HIGH  
 Temperature:25.3°C  
 Operators:DAMIN  
 Test Date:2023-11-10

γ Range: 0 - 180DEG  
 γ Interval: 5.0DEG  
 Test System:EVERFINE GO-2000B\_V1 SYSTEM V2.00.473  
 Humidity:65.0%  
 Test Distance:9.401m [K=1.0000]  
 Remarks:

**UTILIZATION FACTORS TABLE**

Test:U:220.38V I:0.0603A P:7.2475W PF:0.5452 Freq:50.00Hz Lamp Flux:741.433x1 lm		
NAME: 射灯	TYPE:	WEIGHT:
SPEC.:	DIM.:	SERIAL No.:
MFR.: EVERFINE	SUR.: 40.5mm	Shielding Angle:

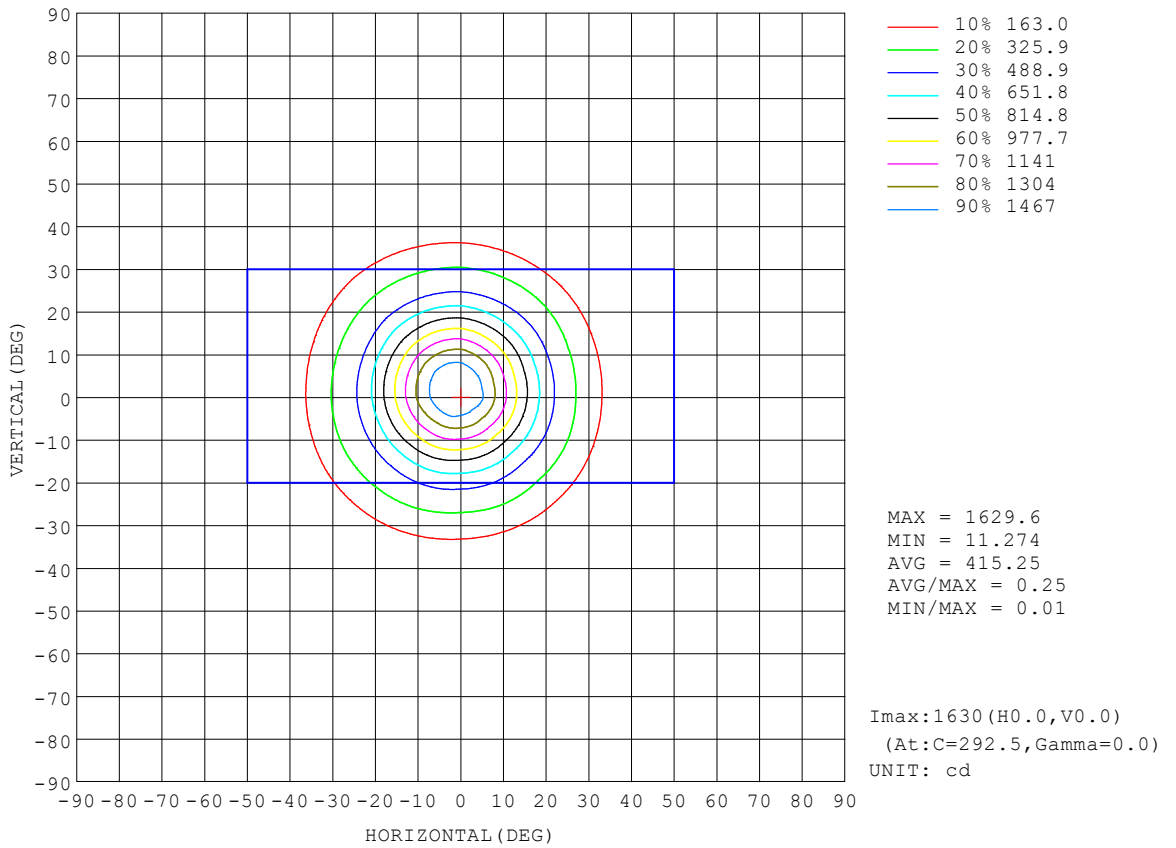
REFLECTANCE										
Ceiling	0.8	0.8	0.8	0.7	0.7	0.7	0.5	0.5	0.5	0
Walls	0.7	0.5	0.3	0.7	0.5	0.3	0.7	0.5	0.3	0
Working plane	0.2	0.2	0.2	0.2	0.2	0.2	0.2	0.2	0.2	0
ROOM INDEX	UTILIZATION FACTORS (PERCENT) $k(RI) \times RCR = 5$									
$k = 0.60$	87	81	77	87	81	77	86	81	77	74
0.80	95	89	85	94	89	85	93	88	85	81
1.00	99	93	90	98	93	89	96	93	89	85
1.25	103	98	94	102	97	94	100	96	93	89
1.50	106	101	97	104	100	97	102	98	96	91
2.00	108	104	101	107	103	100	104	101	98	93
2.50	110	106	103	108	105	102	105	102	100	94
3.00	111	108	105	110	106	104	106	104	102	95
4.00	113	111	108	111	109	107	108	106	104	97
5.00	115	113	111	113	111	109	108	107	106	98
ROOM INDEX	UF(total)									Direct
According to DIN EN 13032-2 2004			Suspended				SHRNOM = 1.25			

C Range: 0 - 360DEG  
 C Interval: 22.5DEG  
 Test Speed: HIGH  
 Temperature:25.3°C  
 Operators:DAMIN  
 Test Date:2023-11-10

$\gamma$  Range: 0 - 180DEG  
 $\gamma$  Interval: 5.0DEG  
 Test System:EVERFINE GO-2000B\_V1 SYSTEM V2.00.473  
 Humidity:65.0%  
 Test Distance:9.401m [K=1.0000]  
 Remarks:

**ISOCANDELA DIAGRAM**

Test:U:220.38V I:0.0603A P:7.2475W PF:0.5452 Freq:50.00Hz Lamp Flux:741.433x1 lm		
NAME: 射灯	TYPE:	WEIGHT:
SPEC.:	DIM.:	SERIAL No.:
MFR.: EVERFINE	SUR.: 40.5mm	Shielding Angle:



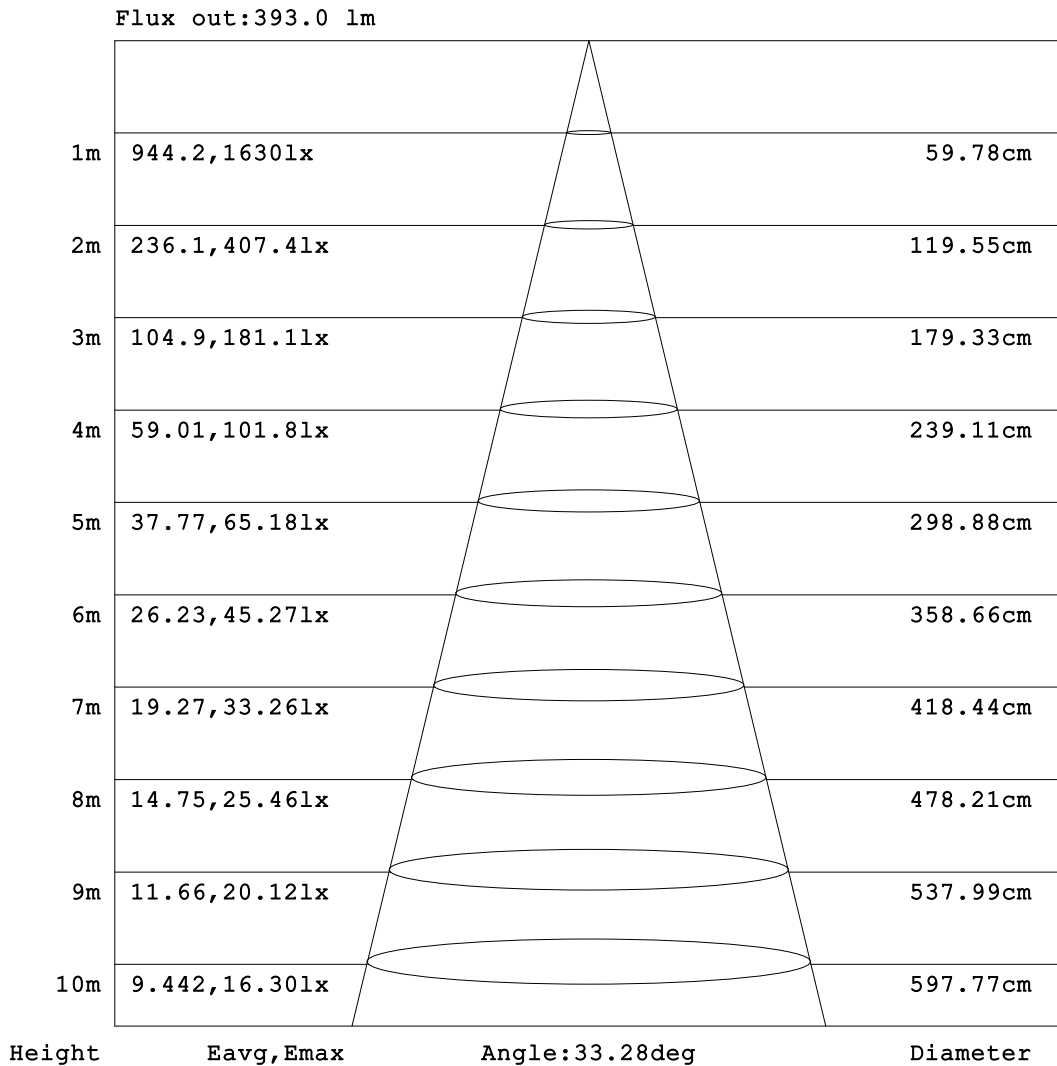
C Range: 0 - 360DEG  
 C Interval: 22.5DEG  
 Test Speed: HIGH  
 Temperature:25.3°C  
 Operators:DAMIN  
 Test Date:2023-11-10

γ Range: 0 - 180DEG  
 γ Interval: 5.0DEG  
 Test System:EVERFINE GO-2000B\_V1 SYSTEM V2.00.473  
 Humidity:65.0%  
 Test Distance:9.401m [K=1.0000]  
 Remarks:



**AAI Figure**

Test:U:220.38V I:0.0603A P:7.2475W PF:0.5452 Freq:50.00Hz Lamp Flux:741.433x1 lm		
NAME: 射灯	TYPE:	WEIGHT:
SPEC.:	DIM.:	SERIAL No.:
MFR.: EVERFINE	SUR.: 40.5mm	Shielding Angle:



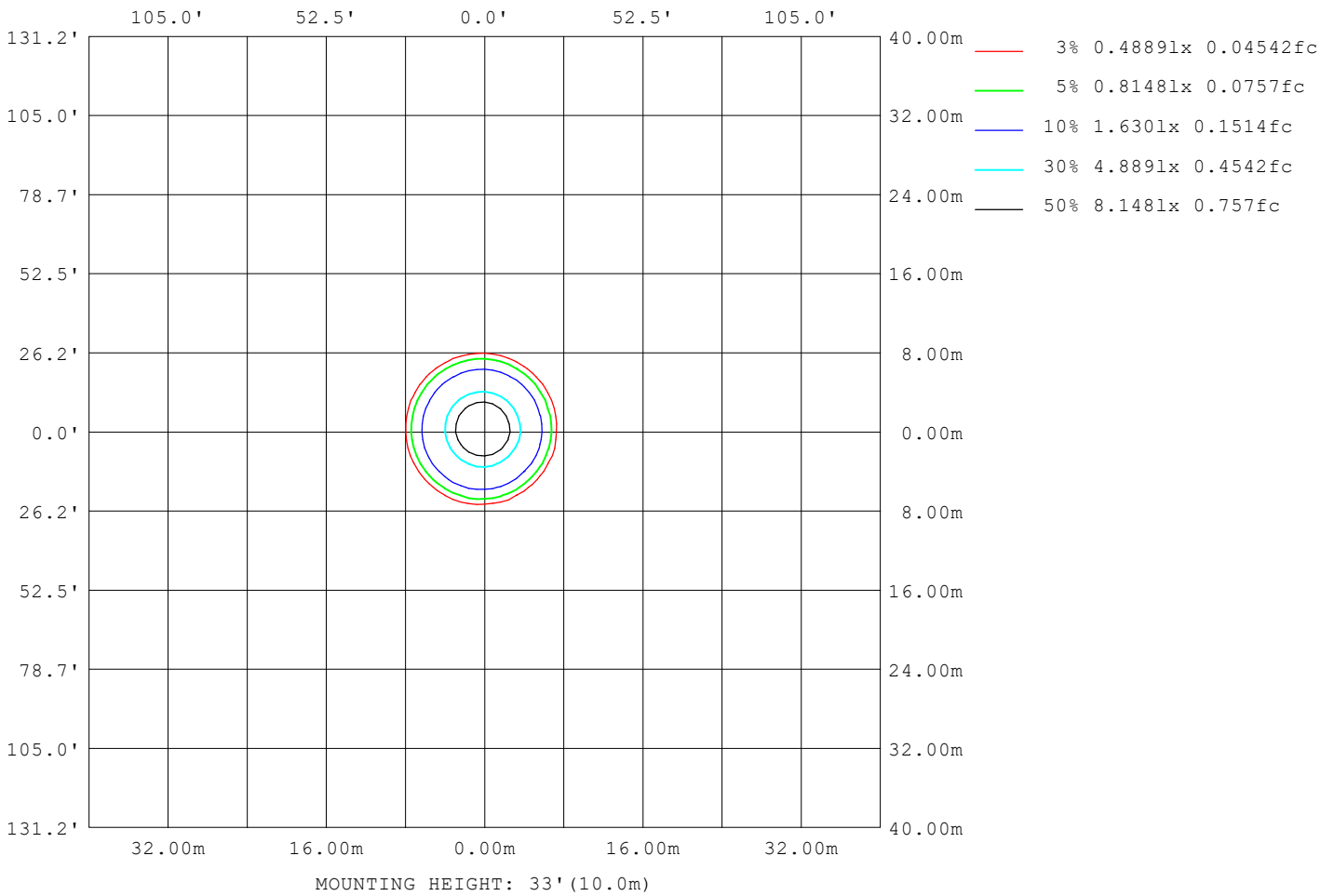
Note:The Curves indicate the illuminated area and the average illumination when the luminaire is at different distance.

C Range: 0 - 360DEG  
C Interval: 22.5DEG  
Test Speed: HIGH  
Temperature:25.3°C  
Operators:DAMIN  
Test Date:2023-11-10

γ Range: 0 - 180DEG  
γ Interval: 5.0DEG  
Test System:EVERFINE GO-2000B\_V1 SYSTEM V2.00.473  
Humidity:65.0%  
Test Distance:9.401m [K=1.0000]  
Remarks:

**ISOLUX DIAGRAM**

Test:U:220.38V I:0.0603A P:7.2475W PF:0.5452 Freq:50.00Hz Lamp Flux:741.433x1 lm		
NAME: 射灯	TYPE:	WEIGHT:
SPEC.:	DIM.:	SERIAL No.:
MFR.: EVERFINE	SUR.: 40.5mm	Shielding Angle:



C Range: 0 - 360DEG  
 C Interval: 22.5DEG  
 Test Speed: HIGH  
 Temperature:25.3°C  
 Operators:DAMIN  
 Test Date:2023-11-10

γ Range: 0 - 180DEG  
 γ Interval: 5.0DEG  
 Test System:EVERFINE GO-2000B\_V1 SYSTEM V2.00.473  
 Humidity:65.0%  
 Test Distance:9.401m [K=1.0000]  
 Remarks:

**LED Avg.L Report**

Test:U:220.38V I:0.0603A P:7.2475W PF:0.5452 Freq:50.00Hz Lamp Flux:741.433x1 lm		
NAME: 射灯	TYPE:	WEIGHT:
SPEC.:	DIM.:	SERIAL No.:
MFR.: EVERFINE	SUR.: 40.5mm	Shielding Angle:

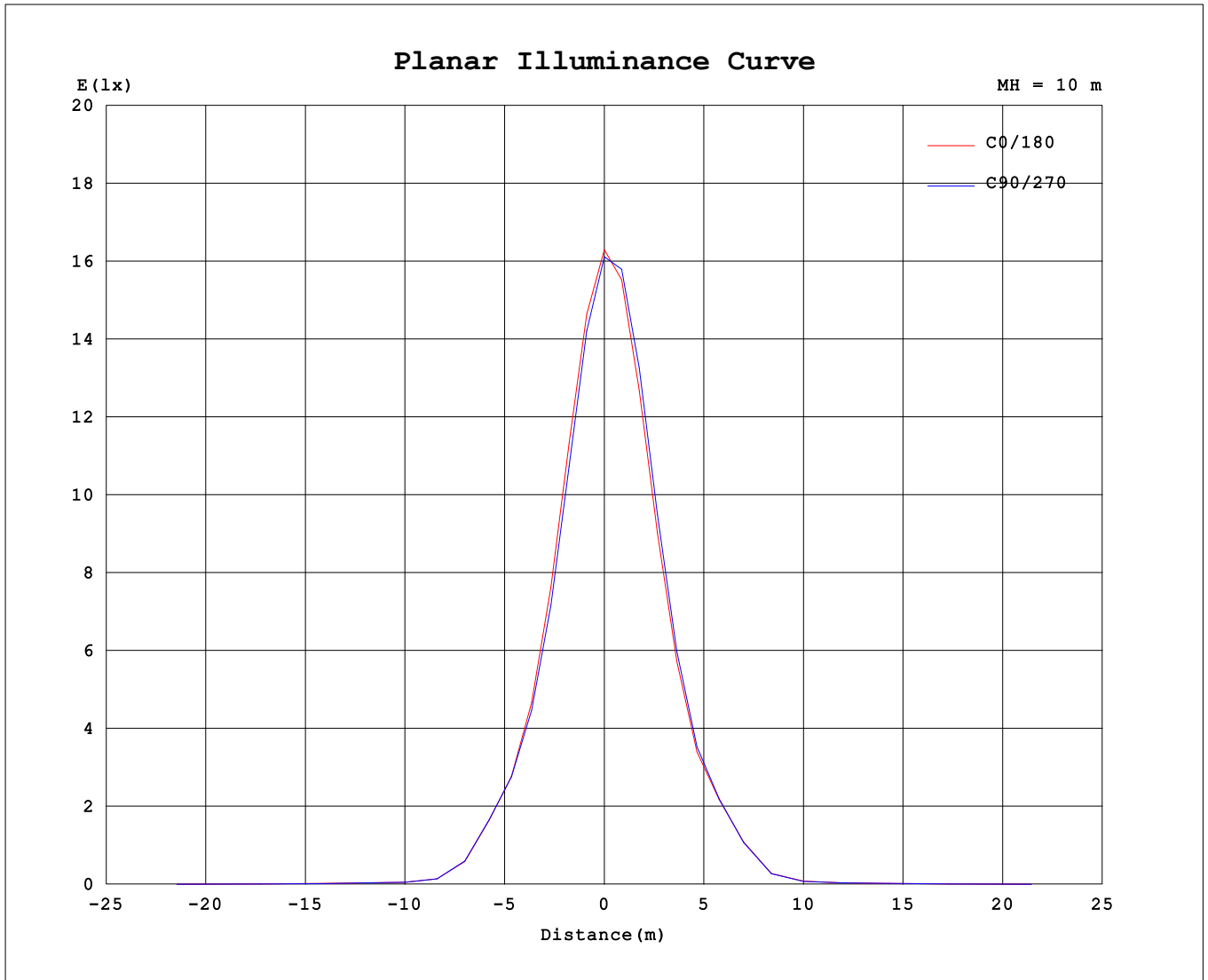
AvgL	cd/m2
L_0~180 (65) av	259
L_0~180 (75) av	282
L_0~180 (85) av	34
L_90~270 (65) av	263
L_90~270 (75) av	253
L_90~270 (85) av	5
L_45 (65) av	262
L_45 (75) av	275
L_45 (85) av	4

Standard: GB/T 29293-2012

C Range: 0 - 360DEG  
 C Interval: 22.5DEG  
 Test Speed: HIGH  
 Temperature:25.3℃  
 Operators:DAMIN  
 Test Date:2023-11-10

γ Range: 0 - 180DEG  
 γ Interval: 5.0DEG  
 Test System:EVERFINE GO-2000B\_V1 SYSTEM V2.00.473  
 Humidity:65.0%  
 Test Distance:9.401m [K=1.0000]  
 Remarks:

**Planar Illuminance Curve**



C Range: 0 - 360DEG  
 C Interval: 22.5DEG  
 Test Speed: HIGH  
 Temperature: 25.3°C  
 Operators: DAMIN  
 Test Date: 2023-11-10

γ Range: 0 - 180DEG  
 γ Interval: 5.0DEG  
 Test System: EVERFINE GO-2000B\_V1 SYSTEM V2.00.473  
 Humidity: 65.0%  
 Test Distance: 9.401m [K=1.0000]  
 Remarks:

LUMINOUS DISTRIBUTION INTENSITY DATA

Test:U:220.38V I:0.0603A P:7.2475W PF:0.5452 Freq:50.00Hz Lamp Flux:741.433x1 lm		
NAME: 射灯	TYPE:	WEIGHT:
SPEC.:	DIM.:	SERIAL No.:
MFR.: EVERFINE	SUR.: 40.5mm	Shielding Angle:

Table--1

UNIT: cd

C (DEG) \ γ (DEG)	0	22.5	45	67.5	90	112.5	135	157.5	180	202.5	225	247.5	270	292.5	315	337.5			
0	1617	1617	1617	1617	1617	1617	1617	1617	1617	1617	1617	1617	1617	1617	1617	1617			
5	1470	1446	1425	1432	1443	1466	1490	1530	1558	1589	1615	1616	1603	1568	1531	1494			
10	1178	1147	1115	1117	1128	1165	1207	1267	1318	1362	1402	1403	1393	1328	1277	1219			
15	841	813	785	789	798	837	878	942	993	1036	1075	1072	1057	993	944	880			
20	558	539	522	531	541	570	598	645	685	721	753	743	724	678	639	590			
25	370	373	360	373	372	385	400	428	454	473	496	488	476	442	417	386			
30	252	243	234	244	258	281	299	321	333	339	348	344	340	315	296	270			
35	105	98.4	92.6	101	110	131	152	179	197	207	214	206	196	172	148	124			
40	31.9	30.1	28.9	30.1	31.5	34.9	39.4	50.3	62.1	71.3	76.6	69.6	61.6	47.2	38.7	34.4			
45	16.2	16.0	15.8	15.7	15.6	16.2	17.7	20.6	23.3	25.2	26.1	24.2	22.5	20.0	18.5	16.9			
50	14.5	14.1	14.0	14.0	13.9	14.1	14.7	15.1	15.4	15.5	15.2	14.8	14.6	14.7	14.8	14.7			
55	11.8	11.6	11.3	11.3	11.4	11.9	12.6	13.1	13.4	13.4	13.3	13.1	12.9	12.6	12.5	12.0			
60	8.70	8.57	8.40	8.48	8.63	9.12	9.62	10.1	10.4	10.5	10.7	10.4	10.2	9.82	9.42	8.97			
65	6.23	6.27	6.41	6.56	6.72	6.94	7.24	7.42	7.57	7.65	7.68	7.51	7.31	6.90	6.60	6.34			
70	5.03	5.14	5.34	5.50	5.68	5.73	5.83	5.74	5.78	5.76	5.57	5.34	4.91	4.82	4.80	4.88			
75	4.30	4.43	4.59	4.60	4.48	4.78	4.90	4.94	4.89	4.79	4.45	3.99	3.76	3.70	3.98	4.16			
80	2.50	2.28	0.97	0.10	0.13	0.08	1.18	3.75	4.09	3.85	3.03	1.71	0.81	1.51	2.50	2.86			
85	0.07	0.00	0.04	0.00	0.05	0.00	0.04	0.00	0.30	0.20	0.00	0.05	0.01	0.05	0.01	0.06			
90	0.00	0.00	0.00	0.00	0.00	0.00	0.00	0.00	0.01	0.01	0.00	0.01	0.01	0.01	0.01	0.01			
95	0.00	0.01	0.00	0.01	0.00	0.01	0.00	0.00	0.01	0.01	0.01	0.01	0.01	0.01	0.01	0.01			
100	0.00	0.03	0.00	0.02	0.00	0.02	0.00	0.02	0.03	0.01	0.02	0.01	0.02	0.01	0.03	0.01			
105	0.02	0.08	0.01	0.07	0.01	0.06	0.00	0.05	0.07	0.01	0.06	0.01	0.06	0.01	0.08	0.03			
110	0.11	0.19	0.12	0.18	0.10	0.14	0.05	0.11	0.16	0.08	0.14	0.08	0.15	0.10	0.19	0.14			
115	0.26	0.34	0.28	0.33	0.25	0.28	0.20	0.23	0.32	0.23	0.28	0.22	0.31	0.27	0.36	0.34			
120	0.51	0.58	0.53	0.58	0.49	0.51	0.40	0.42	0.56	0.46	0.51	0.46	0.54	0.52	0.62	0.60			
125	0.85	0.95	0.90	0.95	0.85	0.83	0.72	0.71	0.90	0.80	0.83	0.78	0.86	0.86	0.99	1.00			
130	1.32	1.42	1.39	1.42	1.32	1.29	1.15	1.13	1.38	1.26	1.28	1.23	1.32	1.33	1.47	1.51			
135	1.89	2.01	1.98	2.02	1.91	1.85	1.70	1.66	1.97	1.84	1.84	1.80	1.90	1.92	2.07	2.13			
140	2.50	2.61	2.59	2.63	2.52	2.46	2.31	2.26	2.61	2.47	2.48	2.42	2.52	2.54	2.71	2.77			
145	3.09	3.21	3.18	3.20	3.10	3.05	2.90	2.85	3.23	3.09	3.11	3.04	3.14	3.15	3.32	3.37			
150	3.59	3.68	3.63	3.66	3.58	3.54	3.39	3.38	3.75	3.60	3.64	3.57	3.67	3.67	3.81	3.81			
155	3.87	3.96	3.90	3.95	3.89	3.85	3.72	3.75	4.06	3.93	3.98	3.92	4.03	4.00	4.09	4.06			
160	3.95	3.95	3.95	3.95	3.96	3.88	3.84	3.84	4.07	4.02	4.03	4.05	4.09	4.09	4.07	4.09			
165	3.91	3.85	3.87	3.88	3.95	3.82	3.84	3.79	3.95	3.97	3.92	4.03	4.01	4.07	3.95	3.99			
170	3.77	3.72	3.75	3.72	3.78	3.67	3.74	3.71	3.80	3.84	3.78	3.84	3.82	3.87	3.79	3.85			
175	3.72	3.72	3.72	3.71	3.67	3.67	3.70	3.71	3.74	3.73	3.72	3.71	3.71	3.77	3.73	3.75			
180	3.71	3.72	3.72	3.71	3.67	3.67	3.72	3.73	3.74	3.71	3.72	3.70	3.71	3.71	3.73	3.74			

C Range: 0 - 360DEG  
 C Interval: 22.5DEG  
 Test Speed: HIGH  
 Temperature:25.3℃  
 Operators:DAMIN  
 Test Date:2023-11-10

γ Range: 0 - 180DEG  
 γ Interval: 5.0DEG  
 Test System:EVERFINE GO-2000B\_V1 SYSTEM V2.00.473  
 Humidity:65.0%  
 Test Distance:9.401m [K=1.0000]  
 Remarks: