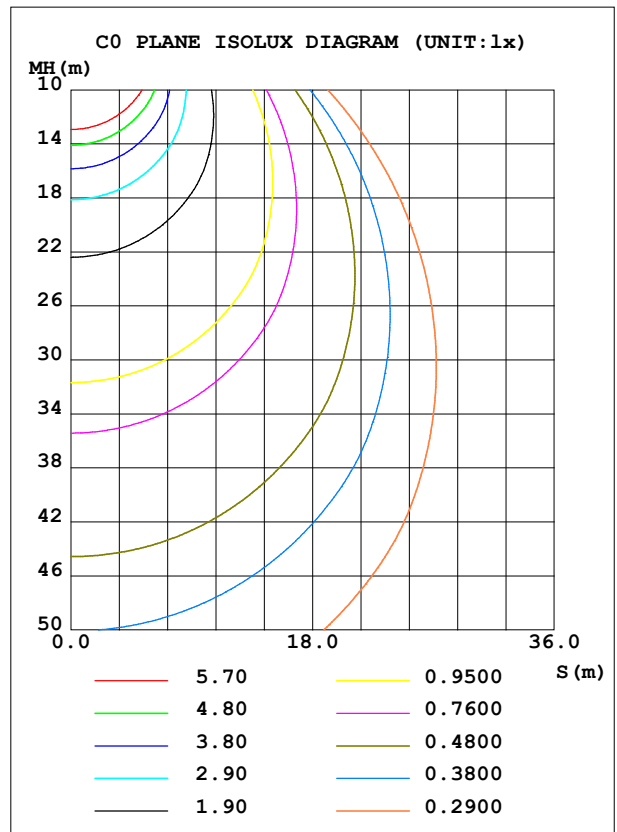
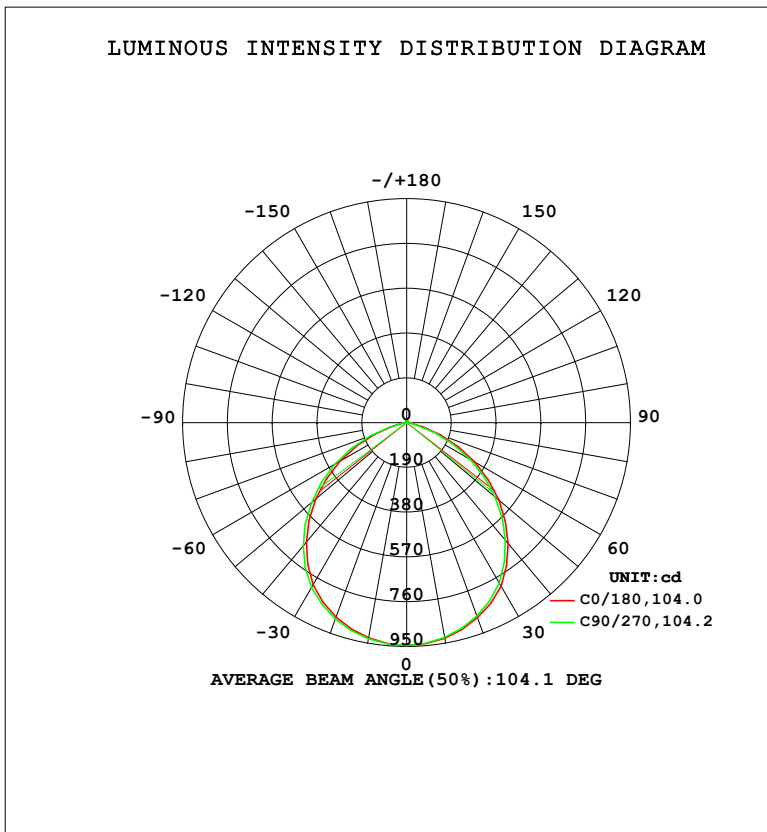


**LUMINAIRE PHOTOMETRIC TEST REPORT**

Test:U:220.35V I:0.1570A P:19.643W PF:0.5680 Freq:50.00Hz Lamp Flux:2393.31x1 lm		
NAME:	TYPE: 227	WEIGHT:
SPEC.:	DIM.:	SERIAL No.:
MFR.: EVERFINE	SUR.: 156.5mm	Shielding Angle:

DATA OF LAMP		PHOTOMETRIC DATA				Eff: 121.84 lm/W
MODEL	227S	I <sub>max</sub> (cd)	944.8	S/MH (C0/180)	1.25	
NOMINAL POWER (W)	20	LOR (%)	100.0	S/MH (C90/270)	1.27	
RATED VOLTAGE (V)	220	TOTAL FLUX (lm)	2393.3	η UP, DN (C0-180)	0.5, 48.6	
NOMINAL FLUX (lm)	2393.31	CIE CLASS	DIRECT	η UP, DN (C180-360)	0.5, 50.4	
LAMPS INSIDE	1	η up (%)	1.0	CIBSE SHR NOM	1.25	
TEST VOLTAGE (V)	219.5	η down (%)	99.0	CIBSE SHR MAX	1.35	



C Range: 0 - 360DEG  
 C Interval: 22.5DEG  
 Test Speed: HIGH  
 Temperature: 25.3°C  
 Operators: DAMIN  
 Test Date: 2023-11-16

γ Range: 0 - 180DEG  
 γ Interval: 5.0DEG  
 Test System: EVERFINE GO-2000B\_V1 SYSTEM V2.00.473  
 Humidity: 65.0%  
 Test Distance: 9.401m [K=1.0000]  
 Remarks:

**ZONAL FLUX DIAGRAM**

ZONAL FLUX DIAGRAM:

$\gamma$	C0	C45	C90	C135	C180	C225	C270	C315	$\gamma$	$\Phi$ zone	$\Phi$ total	%lum, lamp
10	929.2	927.0	925.3	925.5	927.3	930.0	931.5	931.3	0- 10	89.40	89.40	3.74,3.74
20	880.9	876.6	872.9	873.9	877.4	882.5	885.6	885.7	10- 20	256.2	345.6	14.4,14.4
30	800.8	795.0	786.3	790.4	794.8	803.6	808.0	808.5	20- 30	388.4	734.1	30.7,30.7
40	669.8	679.1	652.2	671.9	662.9	692.7	683.4	700.3	30- 40	463.2	1197	50,50
50	510.7	509.4	490.2	502.1	503.2	528.2	527.9	537.0	40- 50	460.5	1658	69.3,69.3
60	333.4	321.1	308.8	313.1	325.0	342.3	350.1	352.2	50- 60	380.1	2038	85.2,85.2
70	154.8	139.7	128.9	131.7	143.4	154.8	163.6	163.9	60- 70	237.0	2275	95.1,95.1
80	25.84	23.74	21.65	21.83	23.64	26.31	25.72	29.07	70- 80	81.58	2357	98.5,98.5
90	1.335	1.063	0.9714	1.011	1.111	1.100	1.063	1.084	80- 90	12.74	2369	99,99
100	1.538	1.658	1.634	1.645	1.869	1.834	1.781	1.798	90-100	1.478	2371	99.1,99.1
110	2.427	2.517	2.545	2.522	2.841	2.771	2.728	2.736	100-110	2.288	2373	99.2,99.2
120	3.442	3.472	3.546	3.484	3.897	3.769	3.742	3.740	110-120	3.101	2376	99.3,99.3
130	4.390	4.422	4.506	4.434	4.840	4.695	4.731	4.690	120-130	3.671	2380	99.4,99.4
140	5.291	5.215	5.344	5.239	5.693	5.482	5.600	5.495	130-140	3.854	2384	99.6,99.6
150	6.103	6.153	6.232	6.158	6.451	6.317	6.366	6.318	140-150	3.655	2387	99.8,99.8
160	6.962	7.072	7.142	7.042	7.215	7.134	7.181	7.153	150-160	3.085	2390	99.9,99.9
170	7.750	7.866	7.855	7.768	7.936	7.897	8.012	7.915	160-170	2.120	2393	100,100
180	8.246	8.299	8.211	8.253	8.264	8.317	8.241	8.271	170-180	0.7691	2393	100,100
DEG	LUMINOUS INTENSITY:cd									UNIT:lm		

Conical surface Flux(90deg): 1433 lm

%lum = 59.9%

%lamp = 59.9%

Conical surface Flux(130deg): 2176.9 lm

%lum = 91.0%

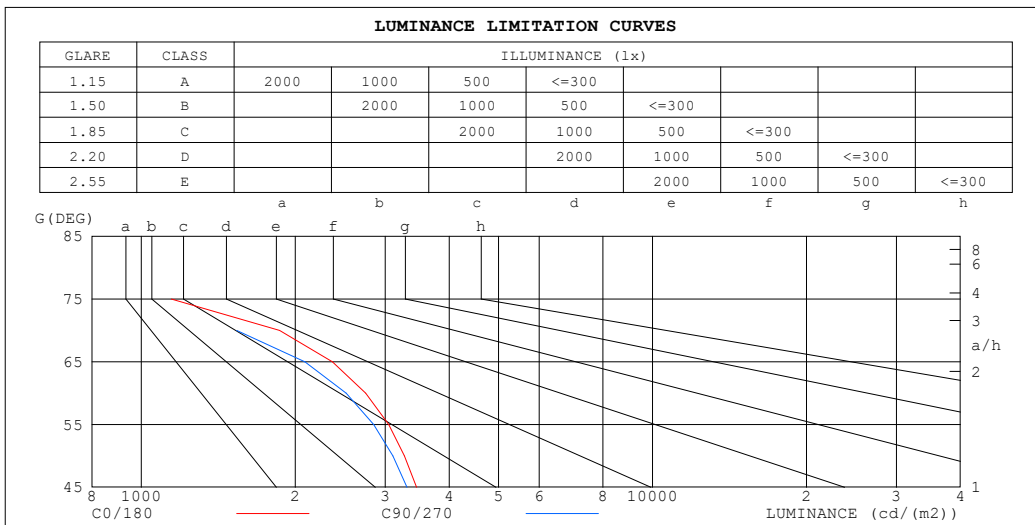
%lamp = 91.0%

C Range: 0 - 360DEG  
 C Interval: 22.5DEG  
 Test Speed: HIGH  
 Temperature:25.3°C  
 Operators:DAMIN  
 Test Date:2023-11-16

$\gamma$  Range: 0 - 180DEG  
 $\gamma$  Interval: 5.0DEG  
 Test System:EVERFINE GO-2000B\_V1 SYSTEM V2.00.473  
 Humidity:65.0%  
 Test Distance:9.401m [K=1.0000]  
 Remarks:

**LUMINANCE LIMITATION CURVES**

Test:U:220.35V I:0.1570A P:19.643W PF:0.5680 Freq:50.00Hz Lamp Flux:2393.31x1 lm		
NAME:	TYPE: 227	WEIGHT:
SPEC.:	DIM.:	SERIAL No.:
MFR.: EVERFINE	SUR.: 156.5mm	Shielding Angle:



LUMINANCE cd/ (m2)		
G (DEG)	C0/180	C90/270
85	592	386
80	613	508
75	1145	788
70	1864	1535
65	2364	2089
60	2746	2516
55	3046	2849
50	3272	3106
45	3453	3306

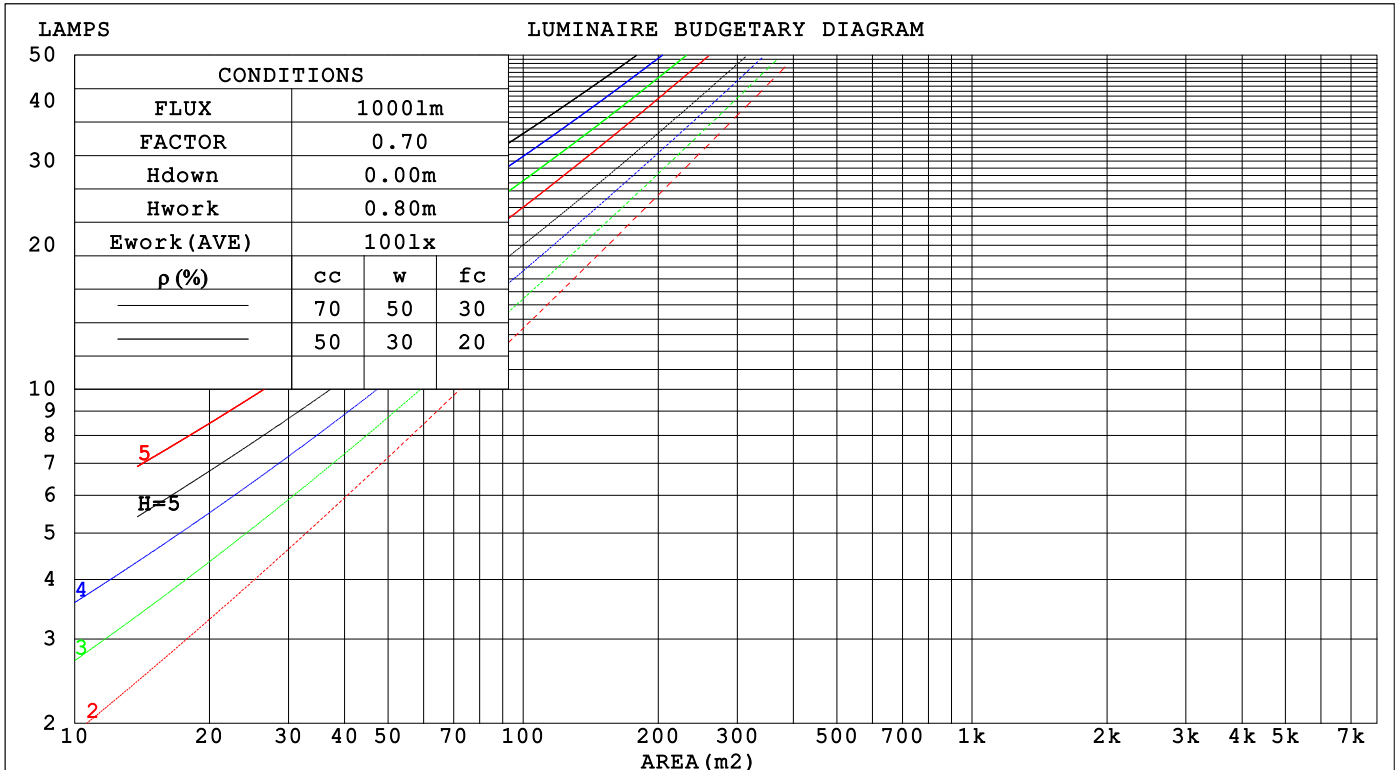
C Range: 0 - 360DEG  
 C Interval: 22.5DEG  
 Test Speed: HIGH  
 Temperature:25.3°C  
 Operators:DAMIN  
 Test Date:2023-11-16

γ Range: 0 - 180DEG  
 γ Interval: 5.0DEG  
 Test System:EVERFINE GO-2000B\_V1 SYSTEM V2.00.473  
 Humidity:65.0%  
 Test Distance:9.401m [K=1.0000]  
 Remarks:

**CU AND LUMINAIRE BUDGETARY ESTIMATE DIAGRAM**

Test:U:220.35V I:0.1570A P:19.643W PF:0.5680 Freq:50.00Hz Lamp Flux:2393.31x1 lm		
NAME:	TYPE: 227	WEIGHT:
SPEC.:	DIM.:	SERIAL No.:
MFR.: EVERFINE	SUR.: 156.5mm	Shielding Angle:

ρcc	80%			70%			50%			30%			10%			0
ρw	50%	30%	10%	50%	30%	10%	50%	30%	10%	50%	30%	10%	50%	30%	10%	0
ρfc	20%			20%			20%			20%			20%			0
RCR	RCR:Room Cavity Ratio      Coefficients of Utilization(CU)															
0.0	1.19	1.19	1.19	1.16	1.16	1.16	1.11	1.11	1.11	1.06	1.06	1.06	1.01	1.01	1.01	.99
1.0	1.06	1.02	.99	1.03	.90	.97	.99	.96	.94	.95	.93	.91	.91	.89	.88	.86
2.0	.93	.87	.82	.91	.86	.81	.88	.83	.79	.84	.80	.77	.81	.78	.75	.73
3.0	.83	.75	.69	.81	.74	.68	.78	.72	.67	.75	.70	.66	.72	.68	.65	.62
4.0	.74	.65	.59	.72	.65	.59	.70	.63	.58	.67	.61	.57	.65	.60	.56	.54
5.0	.66	.57	.51	.65	.57	.51	.63	.56	.50	.61	.54	.50	.59	.53	.49	.47
6.0	.60	.51	.45	.59	.51	.45	.57	.50	.44	.55	.49	.44	.53	.48	.43	.41
7.0	.54	.46	.40	.53	.45	.40	.52	.45	.39	.50	.44	.39	.49	.43	.39	.37
8.0	.49	.41	.36	.49	.41	.35	.47	.40	.35	.46	.40	.35	.45	.39	.35	.33
9.0	.45	.37	.32	.45	.37	.32	.44	.37	.32	.42	.36	.32	.41	.36	.31	.30
10.0	.42	.34	.29	.41	.34	.29	.40	.34	.29	.39	.33	.29	.38	.33	.29	.27



C Range: 0 - 360DEG  
 C Interval: 22.5DEG  
 Test Speed: HIGH  
 Temperature:25.3°C  
 Operators:DAMIN  
 Test Date:2023-11-16

γ Range: 0 - 180DEG  
 γ Interval: 5.0DEG  
 Test System:EVERFINE GO-2000B\_V1 SYSTEM V2.00.473  
 Humidity:65.0%  
 Test Distance:9.401m [K=1.0000]  
 Remarks:

**WEC AND CCEC**

Test:U:220.35V I:0.1570A P:19.643W PF:0.5680 Freq:50.00Hz								
Lamp Flux:2393.31x1 lm								
NAME:			TYPE: 227			WEIGHT:		
SPEC.:			DIM.:			SERIAL No.:		
MFR.: EVERFINE			SUR.: 156.5mm			Shielding Angle:		

$\rho_{CC}$	80%			70%			50%			30%			10%			0
$\rho_w$	50%	30%	10%	50%	30%	10%	50%	30%	10%	50%	30%	10%	50%	30%	10%	0
$\rho_{fc}$	20%			20%			20%			20%			20%			0
RCR	RCR:Room Cavity Ratio						Wall Exitance Coefficients (WEC)									
0.0																
1.0	.271	.154	.049	.263	.150	.048	.250	.143	.046	.237	.137	.044	.226	.131	.042	
2.0	.262	.144	.044	.256	.141	.043	.244	.136	.042	.233	.131	.041	.223	.126	.040	
3.0	.248	.132	.039	.242	.130	.039	.232	.125	.038	.222	.122	.037	.213	.118	.036	
4.0	.232	.121	.035	.227	.119	.035	.218	.115	.034	.209	.112	.034	.201	.109	.033	
5.0	.217	.110	.032	.212	.109	.032	.204	.106	.031	.196	.104	.031	.189	.101	.030	
6.0	.203	.102	.029	.199	.100	.029	.191	.098	.029	.184	.096	.028	.178	.094	.028	
7.0	.190	.094	.027	.186	.093	.026	.180	.091	.026	.174	.089	.026	.168	.087	.026	
8.0	.178	.087	.025	.175	.086	.024	.169	.085	.024	.164	.083	.024	.158	.081	.024	
9.0	.168	.081	.023	.165	.080	.023	.160	.079	.022	.155	.077	.022	.150	.076	.022	
10.0	.158	.076	.021	.156	.075	.021	.151	.074	.021	.146	.073	.021	.142	.071	.020	

$\rho_{CC}$	80%			70%			50%			30%			10%			0
$\rho_w$	50%	30%	10%	50%	30%	10%	50%	30%	10%	50%	30%	10%	50%	30%	10%	0
$\rho_{fc}$	20%			20%			20%			20%			20%			0
RCR	RCR:Room Cavity Ratio						Ceiling Cavity Exitance Coefficients (CCEC)									
0.0	.198	.198	.198	.169	.169	.169	.116	.116	.116	.066	.066	.066	.021	.021	.021	
1.0	.185	.164	.145	.159	.141	.125	.108	.097	.086	.062	.056	.050	.020	.018	.016	
2.0	.176	.140	.109	.151	.120	.095	.103	.083	.066	.060	.048	.039	.019	.016	.013	
3.0	.168	.122	.085	.144	.105	.074	.099	.073	.052	.057	.043	.031	.018	.014	.010	
4.0	.160	.108	.069	.138	.094	.060	.095	.065	.042	.055	.038	.025	.018	.012	.008	
5.0	.153	.098	.057	.132	.085	.050	.091	.059	.035	.053	.035	.021	.017	.011	.007	
6.0	.146	.089	.049	.126	.077	.042	.087	.054	.030	.050	.032	.018	.016	.010	.006	
7.0	.140	.083	.042	.120	.072	.037	.083	.050	.026	.048	.030	.016	.016	.010	.005	
8.0	.134	.077	.038	.115	.067	.033	.080	.047	.023	.046	.028	.014	.015	.009	.005	
9.0	.128	.072	.034	.110	.062	.030	.076	.044	.021	.045	.026	.013	.014	.008	.004	
10.0	.123	.068	.031	.106	.059	.027	.073	.041	.019	.043	.024	.011	.014	.008	.004	

C Range: 0 - 360DEG  
 C Interval: 22.5DEG  
 Test Speed: HIGH  
 Temperature:25.3°C  
 Operators:DAMIN  
 Test Date:2023-11-16

$\gamma$  Range: 0 - 180DEG  
 $\gamma$  Interval: 5.0DEG  
 Test System:EVERFINE GO-2000B\_V1 SYSTEM V2.00.473  
 Humidity:65.0%  
 Test Distance:9.401m [K=1.0000]  
 Remarks:

**UGR(Unified Glare Rating) Table**

Test:U:220.35V I:0.1570A P:19.643W PF:0.5680 Freq:50.00Hz										
Lamp Flux:2393.31x1 lm										
NAME:			TYPE: 227				WEIGHT:			
SPEC.:			DIM.:				SERIAL No.:			
MFR.: EVERFINE			SUR.: 156.5mm				Shielding Angle:			
ceiling/cavity	0.7	0.7	0.5	0.5	0.3	0.7	0.7	0.5	0.5	0.3
walls	0.5	0.3	0.5	0.3	0.3	0.5	0.3	0.5	0.3	0.3
working plane	0.2	0.2	0.2	0.2	0.2	0.2	0.2	0.2	0.2	0.2
Room dimensions	Viewed crosswise					Viewed endwise				
x = 2H y = 2H	13.6	15.0	13.8	15.2	15.4	13.3	14.7	13.5	14.9	15.1
3H	14.3	15.6	14.6	15.9	16.1	13.9	15.2	14.2	15.4	15.7
4H	14.4	15.7	14.7	15.9	16.2	13.9	15.1	14.2	15.4	15.7
6H	14.4	15.5	14.7	15.8	16.1	13.8	15.0	14.2	15.3	15.6
8H	14.3	15.5	14.7	15.8	16.1	13.8	14.9	14.1	15.2	15.5
12H	14.3	15.4	14.7	15.7	16.0	13.7	14.8	14.1	15.1	15.4
4H 2H	13.9	15.1	14.2	15.4	15.7	13.7	14.9	14.0	15.2	15.4
3H	14.8	15.8	15.1	16.1	16.5	14.3	15.4	14.7	15.7	16.0
4H	14.9	15.9	15.3	16.2	16.5	14.4	15.4	14.8	15.7	16.0
6H	14.9	15.7	15.3	16.1	16.5	14.4	15.2	14.8	15.6	16.0
8H	14.9	15.6	15.3	16.0	16.4	14.3	15.1	14.8	15.5	15.9
12H	14.8	15.6	15.3	16.0	16.4	14.3	15.0	14.7	15.4	15.9
8H 4H	14.8	15.6	15.3	16.0	16.4	14.4	15.2	14.8	15.5	15.9
6H	14.9	15.5	15.3	15.9	16.4	14.4	15.0	14.8	15.4	15.9
8H	14.9	15.4	15.3	15.9	16.3	14.4	14.9	14.8	15.4	15.8
12H	14.9	15.4	15.4	15.8	16.3	14.3	14.8	14.8	15.3	15.8
12H 4H	14.8	15.5	15.2	15.9	16.3	14.3	15.1	14.8	15.5	15.9
6H	14.8	15.4	15.3	15.8	16.3	14.3	14.9	14.8	15.4	15.8
8H	14.8	15.3	15.3	15.8	16.3	14.3	14.8	14.8	15.3	15.8
Variations with the observer position at spacings(CIE Pub.117):										
S = 1.0H	+ 0.3 / - 0.3					+ 0.3 / - 0.4				
1.5H	+ 0.3 / - 0.4					+ 0.4 / - 0.5				
2.0H	+ 0.7 / - 0.7					+ 0.7 / - 0.7				

CIE Pub.117, 2393 lm Total Lamp Luminous Flux Correct (8log(F/F0) = 3.0)  
 Area: 0.245 m2

C Range: 0 - 360DEG  
 C Interval: 22.5DEG  
 Test Speed: HIGH  
 Temperature:25.3°C  
 Operators:DAMIN  
 Test Date:2023-11-16

γ Range: 0 - 180DEG  
 γ Interval: 5.0DEG  
 Test System:EVERFINE GO-2000B\_V1 SYSTEM V2.00.473  
 Humidity:65.0%  
 Test Distance:9.401m [K=1.0000]  
 Remarks:

**UTILIZATION FACTORS TABLE**

Test:U:220.35V I:0.1570A P:19.643W PF:0.5680 Freq:50.00Hz Lamp Flux:2393.31x1 lm		
NAME:	TYPE: 227	WEIGHT:
SPEC.:	DIM.:	SERIAL No.:
MFR.: EVERFINE	SUR.: 156.5mm	Shielding Angle:

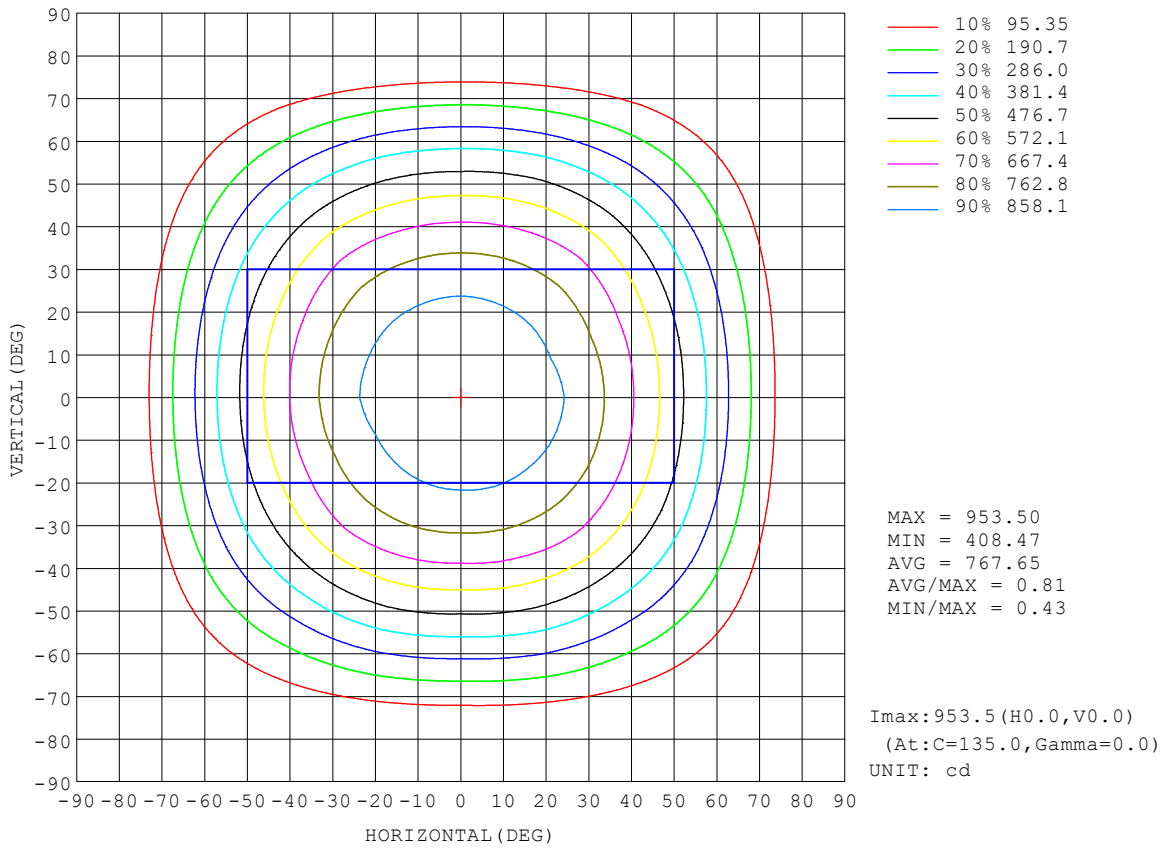
REFLECTANCE										
Ceiling	0.8	0.8	0.8	0.7	0.7	0.7	0.5	0.5	0.5	0
Walls	0.7	0.5	0.3	0.7	0.5	0.3	0.7	0.5	0.3	0
Working plane	0.2	0.2	0.2	0.2	0.2	0.2	0.2	0.2	0.2	0
ROOM INDEX	UTILIZATION FACTORS (PERCENT) $k(RI) \times RCR = 5$									
k = 0.60	60	49	42	59	49	42	58	48	42	36
0.80	71	60	53	70	59	53	68	58	52	46
1.00	79	69	62	78	68	62	76	69	61	55
1.25	86	77	70	85	76	70	82	74	69	62
1.50	91	82	76	89	81	75	86	79	74	67
2.00	98	90	84	96	89	83	92	86	82	74
2.50	101	94	89	99	93	88	95	90	86	78
3.00	104	98	93	102	97	92	98	94	90	82
4.00	108	103	99	105	101	97	101	97	94	86
5.00	110	106	102	107	104	100	103	100	97	88
ROOM INDEX	UF(total)									Direct
According to DIN EN 13032-2 2004			Suspended				SHRNOM = 1.25			

C Range: 0 - 360DEG  
 C Interval: 22.5DEG  
 Test Speed: HIGH  
 Temperature:25.3°C  
 Operators:DAMIN  
 Test Date:2023-11-16

$\gamma$  Range: 0 - 180DEG  
 $\gamma$  Interval: 5.0DEG  
 Test System:EVERFINE GO-2000B\_V1 SYSTEM V2.00.473  
 Humidity:65.0%  
 Test Distance:9.401m [K=1.0000]  
 Remarks:

**ISOCANDELA DIAGRAM**

Test:U:220.35V I:0.1570A P:19.643W PF:0.5680 Freq:50.00Hz Lamp Flux:2393.31x1 lm		
NAME:	TYPE: 227	WEIGHT:
SPEC.:	DIM.:	SERIAL No.:
MFR.: EVERFINE	SUR.: 156.5mm	Shielding Angle:



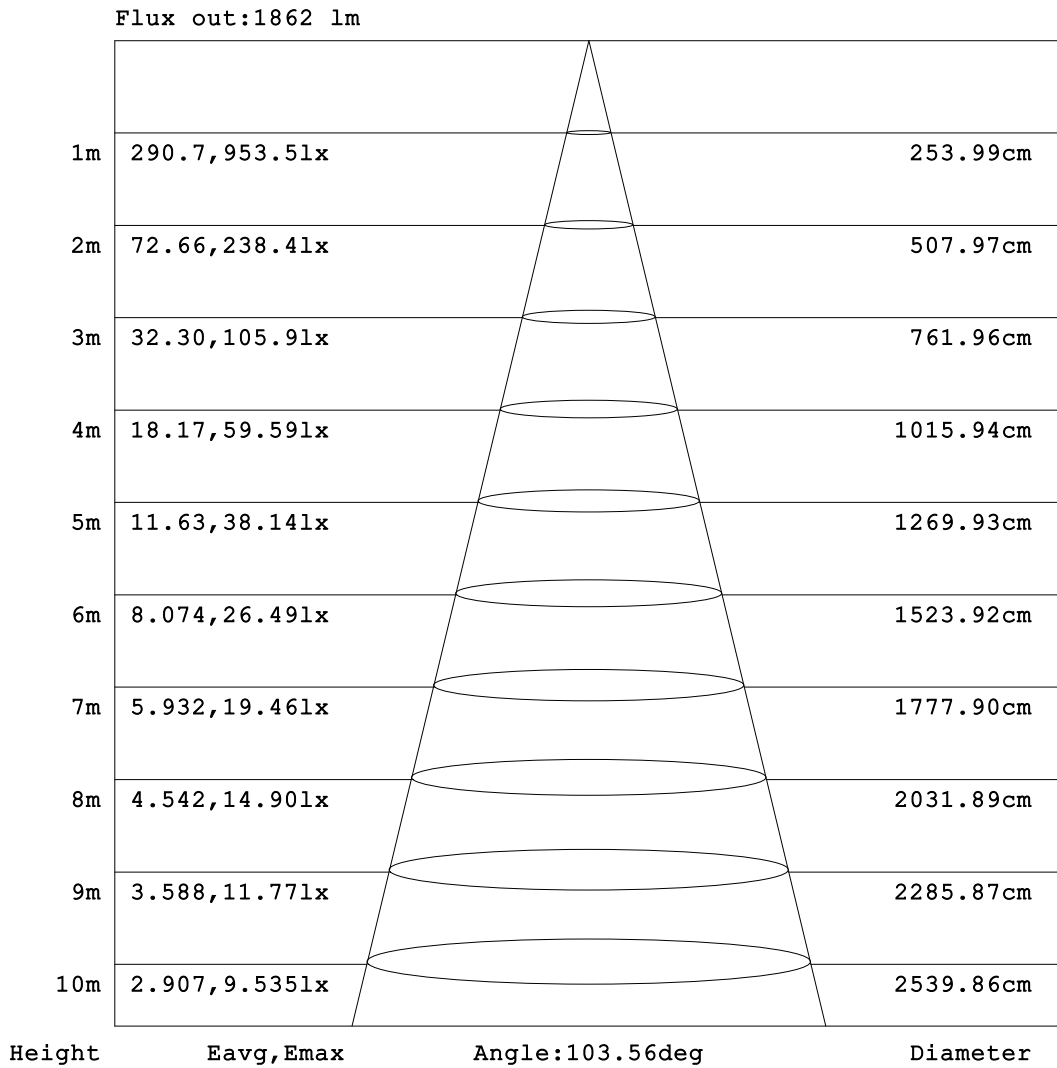
C Range: 0 - 360DEG  
 C Interval: 22.5DEG  
 Test Speed: HIGH  
 Temperature: 25.3°C  
 Operators: DAMIN  
 Test Date: 2023-11-16

γ Range: 0 - 180DEG  
 γ Interval: 5.0DEG  
 Test System: EVERFINE GO-2000B\_V1 SYSTEM V2.00.473  
 Humidity: 65.0%  
 Test Distance: 9.401m [K=1.0000]  
 Remarks:



**AAI Figure**

Test:U:220.35V I:0.1570A P:19.643W PF:0.5680 Freq:50.00Hz Lamp Flux:2393.31x1 lm		
NAME:	TYPE: 227	WEIGHT:
SPEC.:	DIM.:	SERIAL No.:
MFR.: EVERFINE	SUR.: 156.5mm	Shielding Angle:



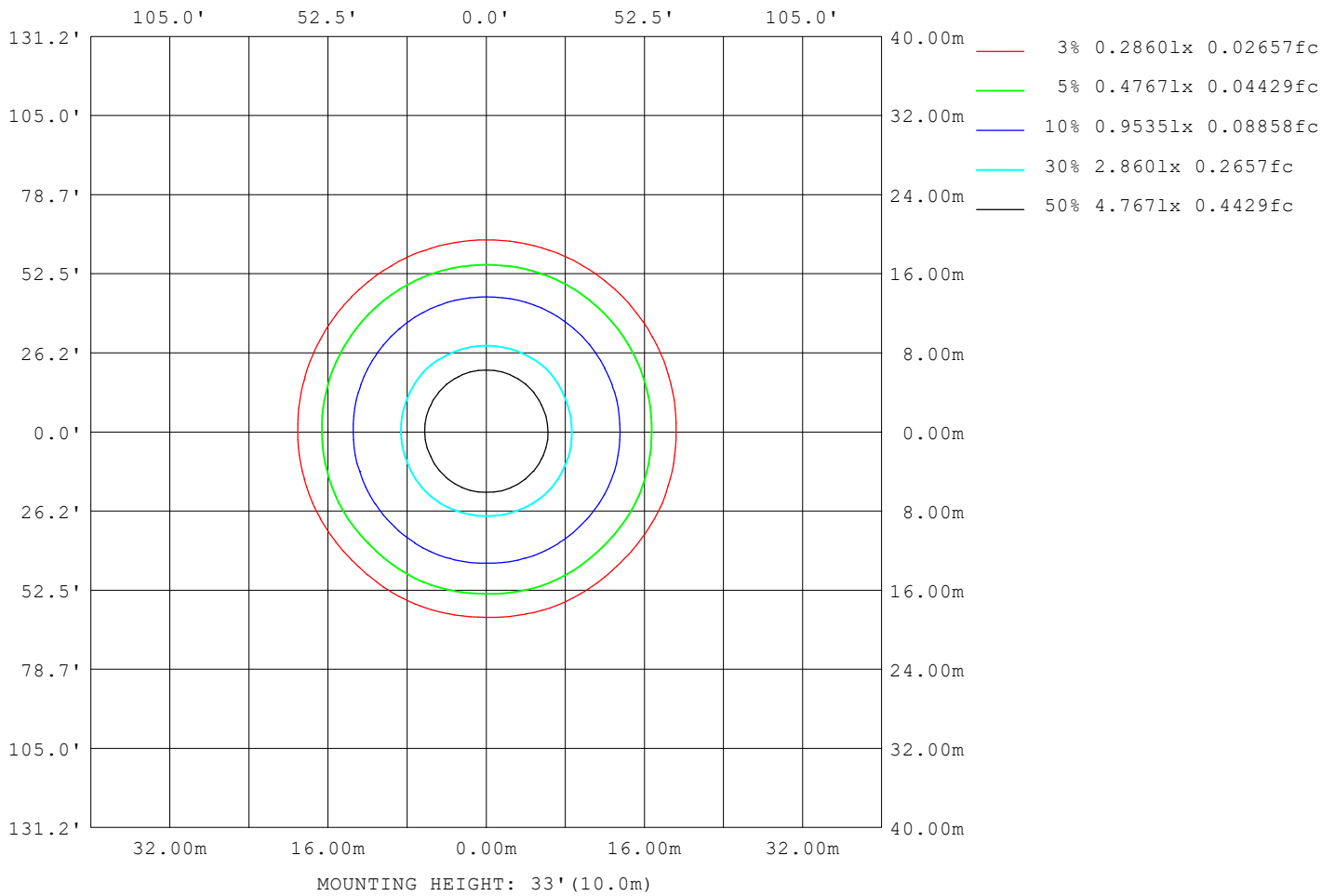
Note:The Curves indicate the illuminated area and the average illumination when the luminaire is at different distance.

C Range: 0 - 360DEG  
C Interval: 22.5DEG  
Test Speed: HIGH  
Temperature:25.3°C  
Operators:DAMIN  
Test Date:2023-11-16

γ Range: 0 - 180DEG  
γ Interval: 5.0DEG  
Test System:EVERFINE GO-2000B\_V1 SYSTEM V2.00.473  
Humidity:65.0%  
Test Distance:9.401m [K=1.0000]  
Remarks:

**ISOLUX DIAGRAM**

Test:U:220.35V I:0.1570A P:19.643W PF:0.5680 Freq:50.00Hz Lamp Flux:2393.31x1 lm		
NAME:	TYPE: 227	WEIGHT:
SPEC.:	DIM.:	SERIAL No.:
MFR.: EVERFINE	SUR.: 156.5mm	Shielding Angle:



C Range: 0 - 360DEG  
 C Interval: 22.5DEG  
 Test Speed: HIGH  
 Temperature:25.3°C  
 Operators:DAMIN  
 Test Date:2023-11-16

γ Range: 0 - 180DEG  
 γ Interval: 5.0DEG  
 Test System:EVERFINE GO-2000B\_V1 SYSTEM V2.00.473  
 Humidity:65.0%  
 Test Distance:9.401m [K=1.0000]  
 Remarks:

**LED Avg.L Report**

Test:U:220.35V I:0.1570A P:19.643W PF:0.5680 Freq:50.00Hz Lamp Flux:2393.31x1 lm		
NAME:	TYPE: 227	WEIGHT:
SPEC.:	DIM.:	SERIAL No.:
MFR.: EVERFINE	SUR.: 156.5mm	Shielding Angle:

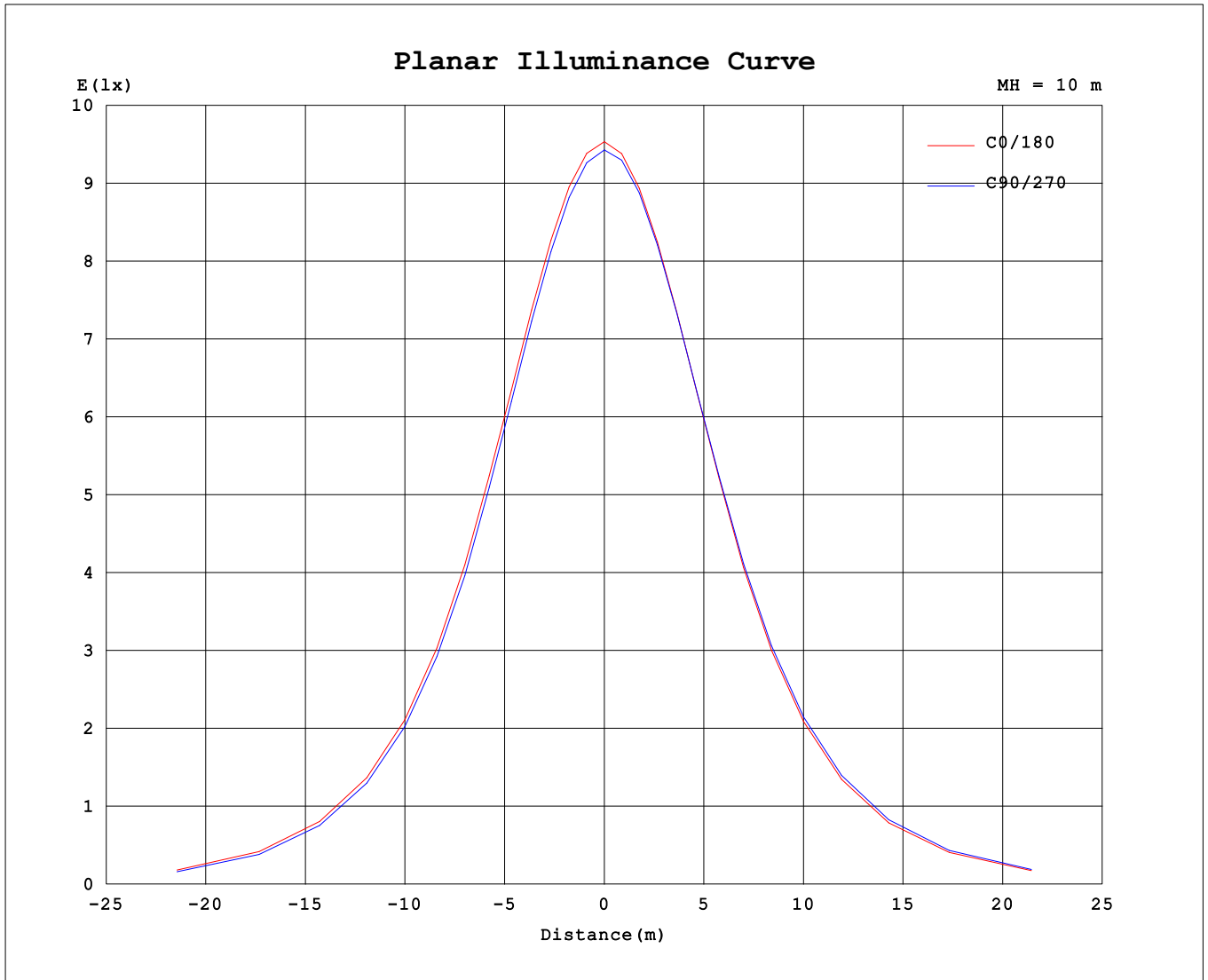
AvgL	cd/m2
L_0~180 (65) av	2295
L_0~180 (75) av	1053
L_0~180 (85) av	534
L_90~270 (65) av	2284
L_90~270 (75) av	989
L_90~270 (85) av	455
L_45 (65) av	2289
L_45 (75) av	1125
L_45 (85) av	486

Standard: GB/T 29293-2012

C Range: 0 - 360DEG  
 C Interval: 22.5DEG  
 Test Speed: HIGH  
 Temperature:25.3°C  
 Operators:DAMIN  
 Test Date:2023-11-16

γ Range: 0 - 180DEG  
 γ Interval: 5.0DEG  
 Test System:EVERFINE GO-2000B\_V1 SYSTEM V2.00.473  
 Humidity:65.0%  
 Test Distance:9.401m [K=1.0000]  
 Remarks:

**Planar Illuminance Curve**



C Range: 0 - 360DEG  
 C Interval: 22.5DEG  
 Test Speed: HIGH  
 Temperature: 25.3°C  
 Operators: DAMIN  
 Test Date: 2023-11-16

γ Range: 0 - 180DEG  
 γ Interval: 5.0DEG  
 Test System: EVERFINE GO-2000B\_V1 SYSTEM V2.00.473  
 Humidity: 65.0%  
 Test Distance: 9.401m [K=1.0000]  
 Remarks:

LUMINOUS DISTRIBUTION INTENSITY DATA

Test:U:220.35V I:0.1570A P:19.643W PF:0.5680 Freq:50.00Hz		
Lamp Flux:2393.31x1 lm		
NAME:	TYPE: 227	WEIGHT:
SPEC.:	DIM.:	SERIAL No.:
MFR.: EVERFINE	SUR.: 156.5mm	Shielding Angle:

Table--1

UNIT: cd

C (DEG) \ γ (DEG)	0	22.5	45	67.5	90	112.5	135	157.5	180	202.5	225	247.5	270	292.5	315	337.5			
0	945	945	945	945	945	945	945	945	945	945	945	945	945	945	945	945			
5	941	941	940	940	939	939	939	940	940	941	941	942	942	942	942	942			
10	929	929	927	926	925	925	926	927	927	928	930	931	931	931	931	930			
15	909	908	906	905	903	904	904	905	906	908	910	911	912	912	912	911			
20	881	880	877	875	873	874	874	876	877	879	882	884	886	885	886	883			
25	845	844	840	838	835	836	836	838	840	843	847	848	851	851	851	848			
30	801	800	795	793	786	790	790	793	795	798	804	805	808	808	809	805			
35	739	744	742	732	723	730	737	734	733	741	753	750	750	754	759	749			
40	670	674	679	662	652	660	672	664	663	673	693	684	683	689	700	680			
45	593	598	598	585	574	583	590	588	586	597	614	610	609	616	622	604			
50	511	516	509	503	490	500	502	505	503	515	528	529	528	536	537	523			
55	424	428	417	415	401	411	409	418	416	429	437	442	441	449	446	437			
60	333	335	321	323	309	316	313	325	325	334	342	349	350	355	352	347			
65	243	241	227	227	217	221	219	230	233	240	246	253	256	257	256	253			
70	155	151	140	136	129	131	132	140	143	150	155	160	164	164	164	163			
75	72.0	72.1	66.2	58.2	50.0	55.3	60.2	62.0	61.5	69.4	75.9	74.5	75.3	78.4	83.0	79.9			
80	25.8	25.4	23.7	22.9	21.7	22.0	21.8	23.1	23.6	24.8	26.3	25.5	25.7	26.2	29.1	27.0			
85	12.5	11.8	10.1	9.15	8.26	8.38	8.47	9.60	10.3	10.6	10.7	10.8	11.2	11.4	12.2	12.8			
90	1.34	1.07	1.06	0.97	0.97	0.99	1.01	1.00	1.11	1.12	1.10	1.07	1.06	1.06	1.08	1.37			
95	1.17	1.25	1.23	1.28	1.24	1.30	1.25	1.27	1.45	1.37	1.42	1.33	1.39	1.30	1.40	1.35			
100	1.54	1.65	1.66	1.68	1.63	1.69	1.64	1.65	1.87	1.78	1.83	1.74	1.78	1.72	1.80	1.74			
105	1.97	2.09	2.08	2.11	2.09	2.13	2.07	2.08	2.33	2.23	2.27	2.19	2.25	2.18	2.26	2.21			
110	2.43	2.54	2.52	2.57	2.54	2.59	2.52	2.54	2.84	2.73	2.77	2.67	2.73	2.65	2.74	2.69			
115	2.93	3.03	2.99	3.06	3.04	3.08	3.01	3.04	3.37	3.25	3.26	3.17	3.23	3.16	3.24	3.21			
120	3.44	3.52	3.47	3.55	3.55	3.55	3.48	3.54	3.90	3.74	3.77	3.67	3.74	3.67	3.74	3.73			
125	3.94	3.98	3.95	4.01	4.03	4.02	3.95	4.02	4.39	4.21	4.21	4.16	4.24	4.15	4.19	4.19			
130	4.39	4.45	4.42	4.45	4.51	4.49	4.43	4.47	4.84	4.66	4.69	4.57	4.73	4.57	4.69	4.66			
135	4.81	4.93	4.81	4.87	4.91	4.89	4.82	4.89	5.25	5.12	5.14	5.00	5.12	5.00	5.13	5.13			
140	5.29	5.30	5.22	5.33	5.34	5.32	5.24	5.37	5.69	5.49	5.48	5.41	5.60	5.41	5.49	5.48			
145	5.67	5.75	5.68	5.77	5.83	5.75	5.69	5.77	6.06	5.91	5.90	5.82	6.02	5.85	5.90	5.91			
150	6.10	6.24	6.15	6.24	6.23	6.25	6.16	6.25	6.45	6.31	6.32	6.23	6.37	6.27	6.32	6.30			
155	6.53	6.62	6.62	6.73	6.71	6.68	6.61	6.66	6.83	6.71	6.73	6.65	6.77	6.68	6.74	6.70			
160	6.96	7.05	7.07	7.21	7.14	7.14	7.04	7.04	7.21	7.10	7.13	7.06	7.18	7.11	7.15	7.08			
165	7.40	7.48	7.50	7.63	7.54	7.54	7.42	7.45	7.60	7.49	7.55	7.52	7.64	7.59	7.56	7.51			
170	7.75	7.89	7.87	7.99	7.85	7.86	7.77	7.84	7.94	7.85	7.90	7.84	8.01	7.95	7.91	7.82			
175	8.07	8.20	8.19	8.22	8.08	8.12	8.08	8.10	8.20	8.14	8.18	8.08	8.16	8.13	8.21	8.08			
180	8.25	8.30	8.30	8.29	8.21	8.24	8.25	8.26	8.26	8.29	8.32	8.23	8.24	8.22	8.27	8.22			

C Range: 0 - 360DEG  
 C Interval: 22.5DEG  
 Test Speed: HIGH  
 Temperature:25.3°C  
 Operators:DAMIN  
 Test Date:2023-11-16

γ Range: 0 - 180DEG  
 γ Interval: 5.0DEG  
 Test System:EVERFINE GO-2000B\_V1 SYSTEM V2.00.473  
 Humidity:65.0%  
 Test Distance:9.401m [K=1.0000]  
 Remarks: