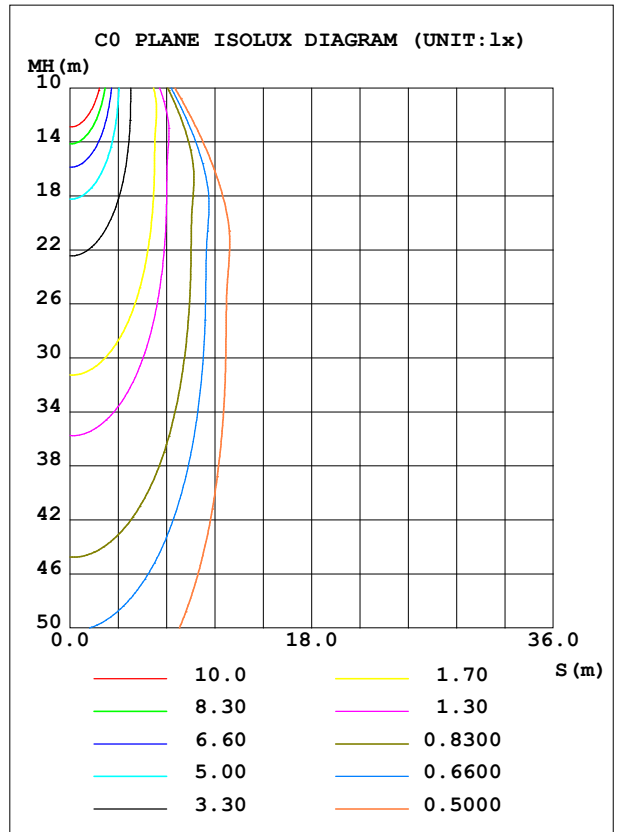
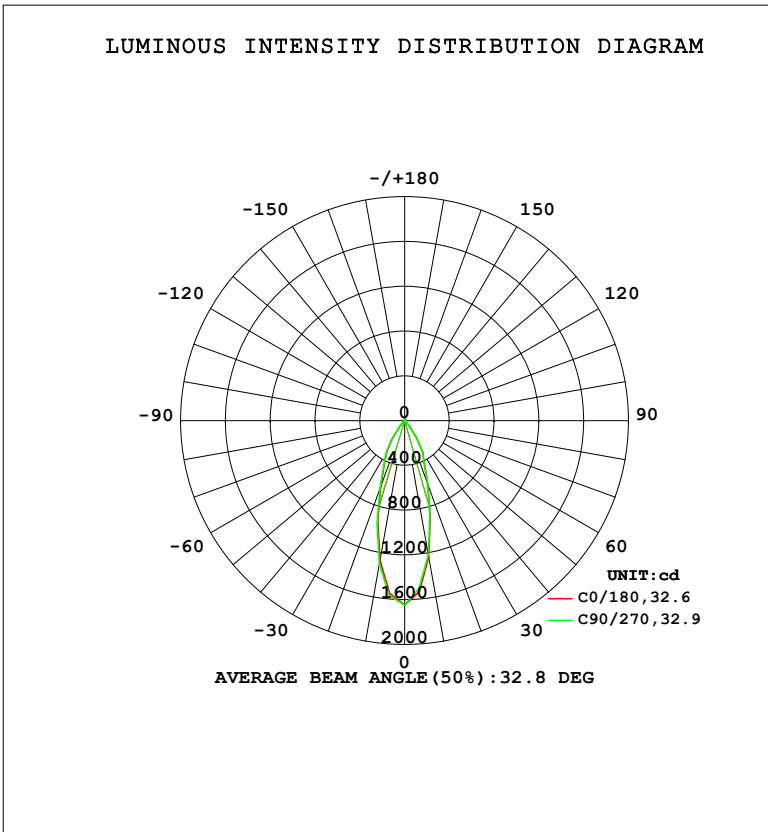


LUMINAIRE PHOTOMETRIC TEST REPORT

Test:U:220.32V I:0.0595A P:7.2060W PF:0.5493 Freq:50.00Hz Lamp Flux:764.401x1 lm		
NAME: 射灯	TYPE:	WEIGHT:
SPEC.:	DIM.:	SERIAL No.:
MFR.: EVERFINE	SUR.: 42mm	Shielding Angle:

DATA OF LAMP		PHOTOMETRIC DATA				Eff: 106.08 lm/W
MODEL	304	I _{max} (cd)	1646	S/MH (C0/180)	0.54	
NOMINAL POWER (W)	7	LOR (%)	100.0	S/MH (C90/270)	0.56	
RATED VOLTAGE (V)	220	TOTAL FLUX (lm)	764.40	η UP, DN (C0-180)	0.5, 48.6	
NOMINAL FLUX (lm)	764.401	CIE CLASS	DIRECT	η UP, DN (C180-360)	0.6, 50.3	
LAMPS INSIDE	1	η up (%)	1.1	CIBSE SHR NOM	0.50	
TEST VOLTAGE (V)	219.5	η down (%)	98.9	CIBSE SHR MAX	0.55	



C Range: 0 - 360DEG
 C Interval: 22.5DEG
 Test Speed: HIGH
 Temperature: 25.3°C
 Operators: DAMIN
 Test Date: 2023-11-10

γ Range: 0 - 180DEG
 γ Interval: 5.0DEG
 Test System: EVERFINE GO-2000B_V1 SYSTEM V2.00.473
 Humidity: 65.0%
 Test Distance: 9.401m [K=1.0000]
 Remarks:

ZONAL FLUX DIAGRAM

ZONAL FLUX DIAGRAM:

γ	C0	C45	C90	C135	C180	C225	C270	C315	γ	Φ zone	Φ total	%lum,lamp
10	1239	1219	1218	1246	1269	1285	1302	1280	0- 10	138.1	138.1	18.1,18.1
20	602.7	588.8	602.1	620.5	634.0	641.3	646.3	632.4	10- 20	255.3	393.4	51.5,51.5
30	322.8	317.7	315.7	321.1	322.7	325.0	326.4	329.6	20- 30	204.8	598.2	78.3,78.3
40	57.99	54.81	53.99	58.26	63.14	67.17	66.58	62.48	30- 40	117.3	715.5	93.6,93.6
50	12.45	12.18	12.58	12.96	13.56	13.58	13.09	12.54	40- 50	22.01	737.5	96.5,96.5
60	6.849	6.807	7.026	7.499	8.161	8.321	7.743	7.112	50- 60	9.191	746.7	97.7,97.7
70	3.695	3.706	3.822	4.008	3.954	3.967	3.771	3.745	60- 70	5.237	752.0	98.4,98.4
80	2.455	2.432	2.628	2.824	2.811	2.810	2.723	2.634	70- 80	3.487	755.5	98.8,98.8
90	0.0060	0.0001	0.0061	0.0062	0.0119	0.0060	0.0121	0.0061	80- 90	0.7752	756.2	98.9,98.9
100	0	0	0	0	0.0418	0.0362	0.0423	0.0424	90-100	0.0123	756.2	98.9,98.9
110	0.1012	0.1020	0.1084	0.0904	0.2211	0.2168	0.2116	0.2299	100-110	0.0765	756.3	98.9,98.9
120	0.4827	0.4925	0.4944	0.4707	0.6809	0.6562	0.6586	0.6836	110-120	0.3457	756.7	99,99
130	1.264	1.286	1.284	1.238	1.553	1.517	1.535	1.567	120-130	0.8557	757.5	99.1,99.1
140	2.445	2.482	2.461	2.391	2.812	2.762	2.772	2.830	130-140	1.541	759.1	99.3,99.3
150	3.573	3.583	3.597	3.492	3.909	3.856	3.882	3.904	140-150	1.998	761.1	99.6,99.6
160	4.009	4.017	4.044	3.946	4.164	4.125	4.183	4.163	150-160	1.831	762.9	99.8,99.8
170	3.908	3.939	3.960	3.898	3.902	3.879	3.941	3.916	160-170	1.141	764.0	100,100
180	3.848	3.909	3.863	3.873	3.854	3.879	3.839	3.879	170-180	0.3711	764.4	100,100
DEG	LUMINOUS INTENSITY:cd									UNIT:lm		

Conical surface Flux(90deg): 730.66 lm

%lum = 95.6%

%lamp = 95.6%

Conical surface Flux(130deg): 749.74 lm

%lum = 98.1%

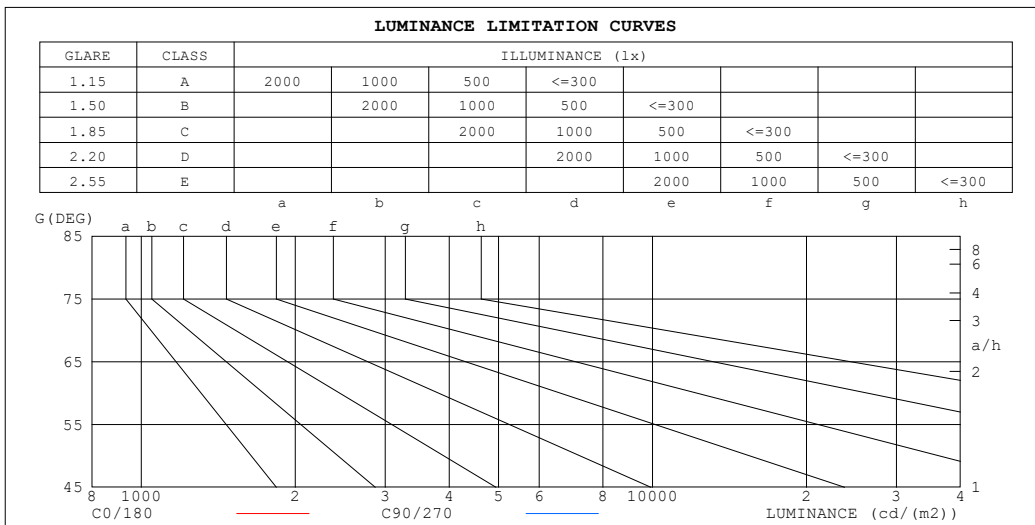
%lamp = 98.1%

C Range: 0 - 360DEG
 C Interval: 22.5DEG
 Test Speed: HIGH
 Temperature:25.3°C
 Operators:DAMIN
 Test Date:2023-11-10

γ Range: 0 - 180DEG
 γ Interval: 5.0DEG
 Test System:EVERFINE GO-2000B_V1 SYSTEM V2.00.473
 Humidity:65.0%
 Test Distance:9.401m [K=1.0000]
 Remarks:

LUMINANCE LIMITATION CURVES

Test:U:220.32V I:0.0595A P:7.2060W PF:0.5493 Freq:50.00Hz Lamp Flux:764.401x1 lm		
NAME: 射灯	TYPE:	WEIGHT:
SPEC.:	DIM.:	SERIAL No.:
MFR.: EVERFINE	SUR.: 42mm	Shielding Angle:



LUMINANCE cd/(m2)		
G (DEG)	C0/180	C90/270
85	17	18
80	238	252
75	212	219
70	182	186
65	184	187
60	230	234
55	286	287
50	326	325
45	471	455

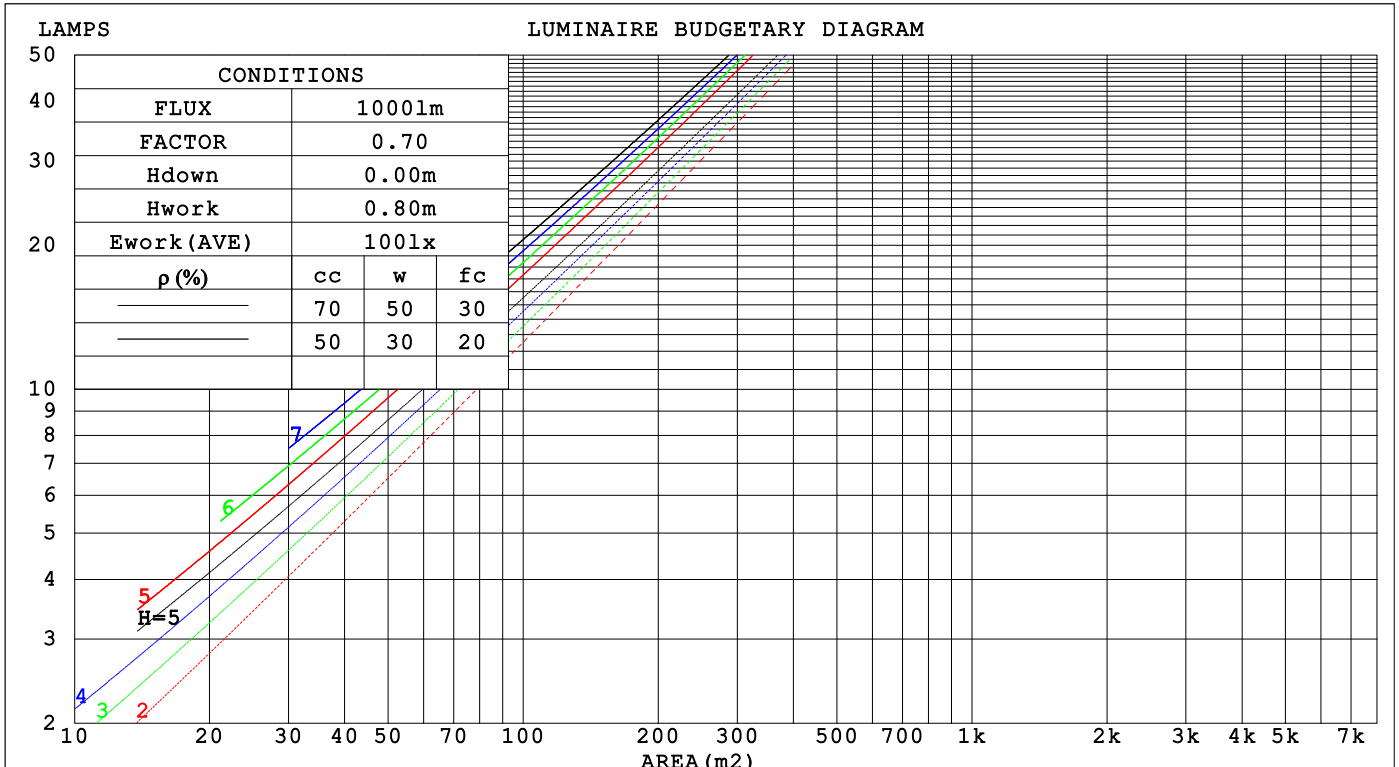
C Range: 0 - 360DEG
 C Interval: 22.5DEG
 Test Speed: HIGH
 Temperature:25.3°C
 Operators:DAMIN
 Test Date:2023-11-10

γ Range: 0 - 180DEG
 γ Interval: 5.0DEG
 Test System:EVERFINE GO-2000B_V1 SYSTEM V2.00.473
 Humidity:65.0%
 Test Distance:9.401m [K=1.0000]
 Remarks:

CU AND LUMINAIRE BUDGETARY ESTIMATE DIAGRAM

Test:U:220.32V I:0.0595A P:7.2060W PF:0.5493 Freq:50.00Hz Lamp Flux:764.401x1 lm		
NAME: 射灯	TYPE:	WEIGHT:
SPEC.:	DIM.:	SERIAL No.:
MFR.: EVERFINE	SUR.: 42mm	Shielding Angle:

pcc	80%			70%			50%			30%			10%			0
p _w	50%	30%	10%	50%	30%	10%	50%	30%	10%	50%	30%	10%	50%	30%	10%	0
p _{fc}	20%			20%			20%			20%			20%			0
RCR	RCR:Room Cavity Ratio															
	Coefficients of Utilization(CU)															
0.0	1.19	1.19	1.19	1.16	1.16	1.16	1.11	1.11	1.11	1.06	1.06	1.06	1.01	1.01	1.01	.99
1.0	1.11	1.09	1.06	1.09	1.07	1.05	1.04	1.03	1.01	1.01	.99	.98	.97	.96	.95	.93
2.0	1.04	1.00	.97	1.02	.99	.96	.99	.96	.94	.96	.93	.91	.93	.91	.89	.88
3.0	.98	.93	.89	.96	.92	.89	.93	.90	.87	.91	.88	.86	.89	.86	.84	.83
4.0	.92	.87	.83	.91	.86	.83	.89	.85	.81	.87	.83	.80	.85	.82	.79	.78
5.0	.87	.82	.78	.86	.81	.77	.84	.80	.77	.82	.79	.76	.81	.78	.75	.74
6.0	.82	.77	.73	.82	.77	.73	.80	.76	.72	.79	.75	.72	.77	.74	.71	.70
7.0	.78	.73	.69	.78	.73	.69	.76	.72	.68	.75	.71	.68	.74	.70	.68	.66
8.0	.75	.69	.65	.74	.69	.65	.73	.68	.65	.72	.68	.65	.71	.67	.64	.63
9.0	.71	.66	.62	.71	.66	.62	.70	.65	.62	.69	.65	.62	.68	.64	.61	.60
10.0	.68	.63	.59	.68	.63	.59	.67	.62	.59	.66	.62	.59	.65	.61	.59	.57



C Range: 0 - 360DEG
 C Interval: 22.5DEG
 Test Speed: HIGH
 Temperature:25.3°C
 Operators:DAMIN
 Test Date:2023-11-10

γ Range: 0 - 180DEG
 γ Interval: 5.0DEG
 Test System:EVERFINE GO-2000B_V1 SYSTEM V2.00.473
 Humidity:65.0%
 Test Distance:9.401m [K=1.0000]
 Remarks:

WEC AND CCEC

Test:U:220.32V I:0.0595A P:7.2060W PF:0.5493 Freq:50.00Hz								
Lamp Flux:764.401x1 lm								
NAME: 射灯			TYPE:			WEIGHT:		
SPEC.:			DIM.:			SERIAL No.:		
MFR.: EVERFINE			SUR.: 42mm			Shielding Angle:		

ρ_{CC}	80%			70%			50%			30%			10%			0
ρ_w	50%	30%	10%	50%	30%	10%	50%	30%	10%	50%	30%	10%	50%	30%	10%	0
ρ_{fc}	20%			20%			20%			20%			20%			0
RCR	RCR:Room Cavity Ratio						Wall Exitance Coefficients (WEC)									
0.0																
1.0	.169	.096	.030	.162	.092	.029	.149	.085	.027	.137	.079	.025	.126	.073	.023	
2.0	.160	.088	.027	.154	.085	.026	.143	.080	.025	.133	.074	.023	.123	.070	.022	
3.0	.151	.080	.024	.146	.078	.024	.137	.074	.023	.128	.070	.021	.120	.066	.021	
4.0	.143	.074	.022	.139	.073	.021	.131	.069	.021	.123	.066	.020	.116	.063	.019	
5.0	.136	.069	.020	.132	.068	.020	.125	.065	.019	.118	.062	.019	.112	.060	.018	
6.0	.129	.065	.019	.126	.064	.018	.119	.061	.018	.114	.059	.017	.108	.057	.017	
7.0	.123	.061	.017	.120	.060	.017	.115	.058	.017	.109	.056	.016	.105	.054	.016	
8.0	.117	.057	.016	.115	.057	.016	.110	.055	.016	.105	.053	.015	.101	.052	.015	
9.0	.112	.054	.015	.110	.054	.015	.106	.052	.015	.102	.051	.015	.098	.050	.014	
10.0	.108	.052	.014	.106	.051	.014	.102	.050	.014	.098	.049	.014	.094	.047	.014	

ρ_{CC}	80%			70%			50%			30%			10%			0
ρ_w	50%	30%	10%	50%	30%	10%	50%	30%	10%	50%	30%	10%	50%	30%	10%	0
ρ_{fc}	20%			20%			20%			20%			20%			0
RCR	RCR:Room Cavity Ratio						Ceiling Cavity Exitance Coefficients (CCEC)									
0.0	.199	.199	.199	.170	.170	.170	.116	.116	.116	.067	.067	.067	.021	.021	.021	
1.0	.179	.166	.154	.153	.142	.132	.105	.098	.091	.060	.057	.053	.019	.018	.017	
2.0	.163	.141	.122	.140	.121	.106	.096	.084	.074	.055	.049	.043	.018	.016	.014	
3.0	.150	.122	.099	.129	.105	.086	.088	.073	.060	.051	.043	.036	.016	.014	.012	
4.0	.139	.107	.082	.119	.092	.072	.082	.064	.050	.047	.038	.030	.015	.012	.010	
5.0	.130	.095	.070	.112	.082	.061	.077	.058	.043	.044	.034	.025	.014	.011	.008	
6.0	.122	.086	.060	.105	.074	.052	.072	.052	.037	.042	.031	.022	.014	.010	.007	
7.0	.115	.078	.052	.099	.068	.045	.068	.047	.032	.040	.028	.019	.013	.009	.006	
8.0	.109	.072	.046	.094	.062	.040	.065	.044	.028	.038	.026	.017	.012	.008	.006	
9.0	.104	.066	.041	.090	.058	.036	.062	.040	.025	.036	.024	.015	.012	.008	.005	
10.0	.099	.062	.037	.086	.054	.032	.059	.038	.023	.035	.022	.014	.011	.007	.005	

C Range: 0 - 360DEG
 C Interval: 22.5DEG
 Test Speed: HIGH
 Temperature:25.3°C
 Operators:DAMIN
 Test Date:2023-11-10

γ Range: 0 - 180DEG
 γ Interval: 5.0DEG
 Test System:EVERFINE GO-2000B_V1 SYSTEM V2.00.473
 Humidity:65.0%
 Test Distance:9.401m [K=1.0000]
 Remarks:

UGR(Unified Glare Rating) Table

Test:U:220.32V I:0.0595A P:7.2060W PF:0.5493 Freq:50.00Hz Lamp Flux:764.40lx1 lm		
NAME: 射灯	TYPE:	WEIGHT:
SPEC.:	DIM.:	SERIAL No.:
MFR.: EVERFINE	SUR.: 42mm	Shielding Angle:

ceiling/cavity	0.7	0.7	0.5	0.5	0.3	0.7	0.7	0.5	0.5	0.3
walls	0.5	0.3	0.5	0.3	0.3	0.5	0.3	0.5	0.3	0.3
working plane	0.2	0.2	0.2	0.2	0.2	0.2	0.2	0.2	0.2	0.2

Room dimensions	Viewed crosswise					Viewed endwise				
x = 2H y = 2H	6.9	7.8	7.2	8.0	8.1	6.7	7.6	7.0	7.8	8.0
3H	6.9	7.7	7.2	7.9	8.1	6.7	7.5	7.0	7.7	8.0
4H	7.0	7.8	7.3	8.0	8.2	6.9	7.6	7.1	7.8	8.1
6H	7.1	7.8	7.4	8.1	8.4	7.0	7.7	7.3	8.0	8.2
8H	7.1	7.8	7.4	8.0	8.3	7.0	7.6	7.3	7.9	8.2
12H	7.0	7.7	7.4	8.0	8.3	6.9	7.6	7.3	7.9	8.1
4H 2H	6.8	7.5	7.0	7.7	8.0	6.6	7.3	6.9	7.5	7.8
3H	6.8	7.5	7.2	7.8	8.0	6.7	7.3	7.0	7.6	7.9
4H	7.0	7.6	7.4	7.9	8.3	6.9	7.5	7.3	7.8	8.1
6H	7.2	7.8	7.6	8.1	8.5	7.2	7.7	7.6	8.0	8.4
8H	7.2	7.7	7.6	8.0	8.4	7.1	7.6	7.5	8.0	8.4
12H	7.1	7.6	7.6	8.0	8.4	7.1	7.5	7.5	7.9	8.3
8H 4H	7.1	7.5	7.5	7.9	8.3	6.9	7.4	7.3	7.8	8.2
6H	7.3	7.7	7.8	8.1	8.6	7.2	7.6	7.7	8.1	8.5
8H	7.3	7.6	7.7	8.0	8.5	7.2	7.5	7.7	8.0	8.4
12H	7.2	7.5	7.7	8.0	8.5	7.1	7.4	7.6	7.9	8.4
12H 4H	7.0	7.5	7.4	7.9	8.3	6.9	7.3	7.3	7.7	8.1
6H	7.3	7.6	7.7	8.1	8.5	7.2	7.6	7.7	8.0	8.5
8H	7.2	7.5	7.7	8.0	8.5	7.1	7.4	7.6	7.9	8.4

Variations with the observer position at spacings(CIE Pub.117):		
S = 1.0H	+ 2.0 / - 2.1	+ 1.7 / - 1.9
1.5H	+ 3.7 / - 1.8	+ 3.3 / - 1.6
2.0H	+ 1.2 / - 0.9	+ 1.1 / - 0.9

CIE Pub.117, 764.4 lm Total Lamp Luminous Flux Correct (8log(F/F0) = -0.9)
Area: 0.06 m2

C Range: 0 - 360DEG
C Interval: 22.5DEG
Test Speed: HIGH
Temperature:25.3°C
Operators:DAMIN
Test Date:2023-11-10

γ Range: 0 - 180DEG
γ Interval: 5.0DEG
Test System:EVERFINE GO-2000B_V1 SYSTEM V2.00.473
Humidity:65.0%
Test Distance:9.401m [K=1.0000]
Remarks:

UTILIZATION FACTORS TABLE

Test:U:220.32V I:0.0595A P:7.2060W PF:0.5493 Freq:50.00Hz Lamp Flux:764.40lx1 lm		
NAME: 射灯	TYPE:	WEIGHT:
SPEC.:	DIM.:	SERIAL No.:
MFR.: EVERFINE	SUR.: 42mm	Shielding Angle:

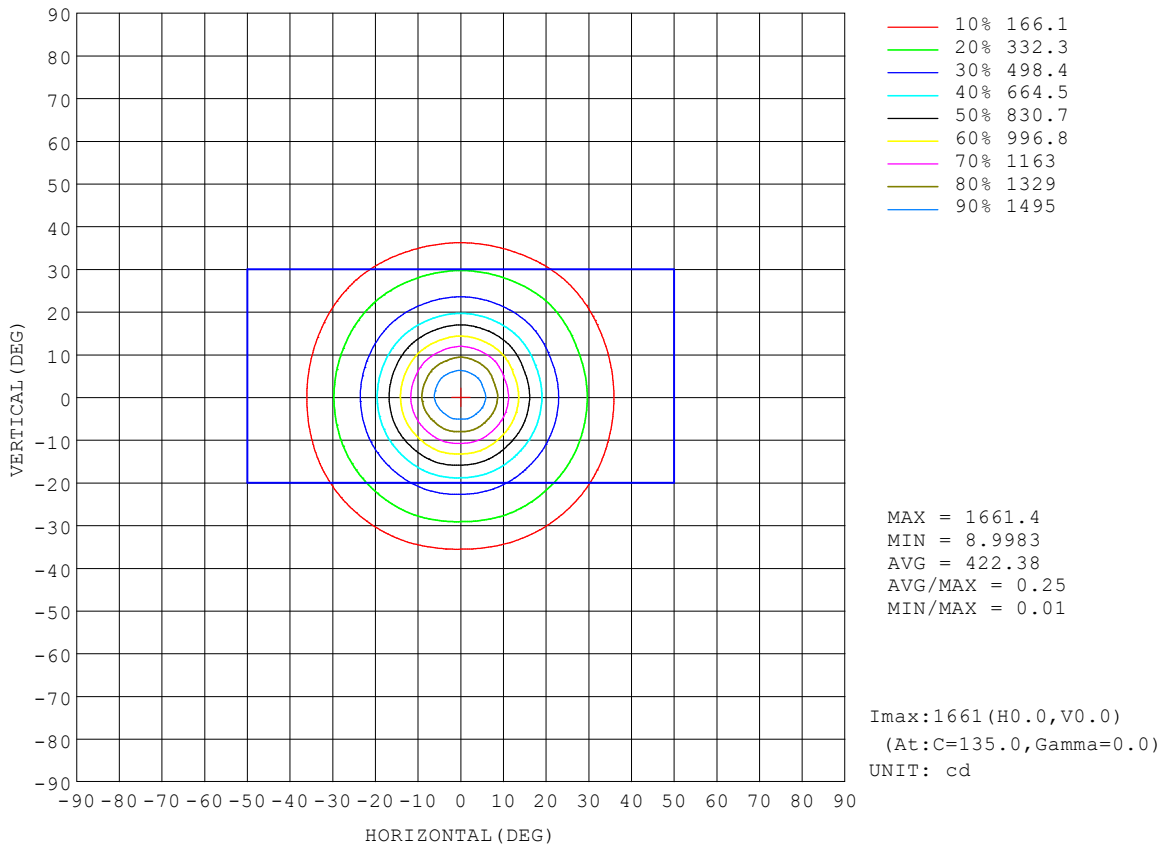
REFLECTANCE										
Ceiling	0.8	0.8	0.8	0.7	0.7	0.7	0.5	0.5	0.5	0
Walls	0.7	0.5	0.3	0.7	0.5	0.3	0.7	0.5	0.3	0
Working plane	0.2	0.2	0.2	0.2	0.2	0.2	0.2	0.2	0.2	0
ROOM INDEX	UTILIZATION FACTORS (PERCENT) $k(RI) \times RCR = 5$									
k = 0.60	88	81	78	87	81	78	86	81	77	74
0.80	95	89	85	94	89	85	93	88	85	81
1.00	99	94	90	98	93	90	97	93	89	85
1.25	103	98	94	102	97	94	100	96	93	89
1.50	106	101	98	104	100	97	102	99	96	91
2.00	108	104	101	107	103	100	104	101	98	93
2.50	110	106	103	108	105	102	105	102	100	94
3.00	111	108	105	110	107	104	106	104	102	95
4.00	114	111	109	111	109	107	108	106	104	97
5.00	115	113	111	113	111	109	108	107	106	98
ROOM INDEX	UF(total)									Direct
According to DIN EN 13032-2 2004			Suspended				SHRNOM = 1.25			

C Range: 0 - 360DEG
 C Interval: 22.5DEG
 Test Speed: HIGH
 Temperature:25.3°C
 Operators:DAMIN
 Test Date:2023-11-10

γ Range: 0 - 180DEG
 γ Interval: 5.0DEG
 Test System:EVERFINE GO-2000B_V1 SYSTEM V2.00.473
 Humidity:65.0%
 Test Distance:9.401m [K=1.0000]
 Remarks:

ISOCANDELA DIAGRAM

Test:U:220.32V I:0.0595A P:7.2060W PF:0.5493 Freq:50.00Hz Lamp Flux:764.401x1 lm		
NAME: 射灯	TYPE:	WEIGHT:
SPEC.:	DIM.:	SERIAL No.:
MFR.: EVERFINE	SUR.: 42mm	Shielding Angle:

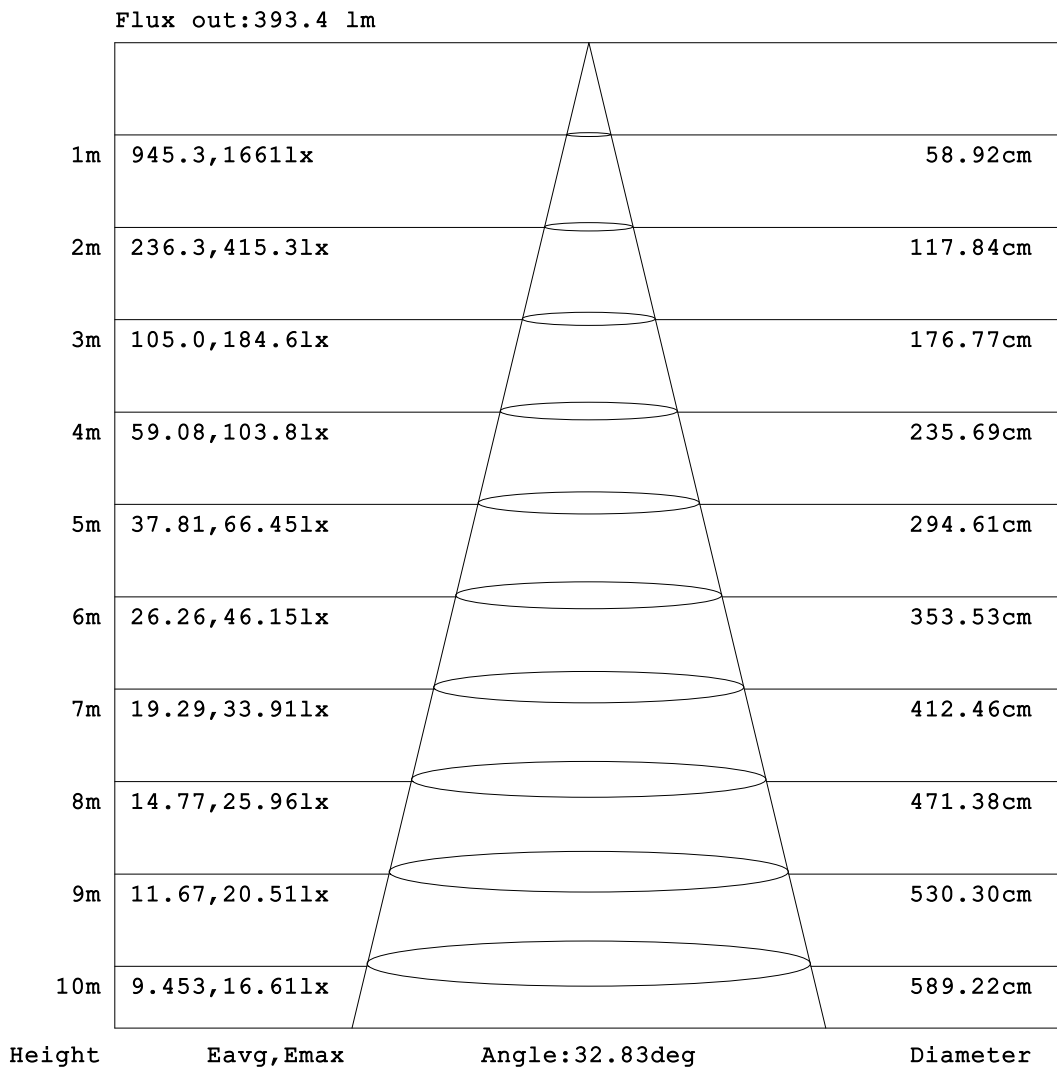


C Range: 0 - 360DEG
 C Interval: 22.5DEG
 Test Speed: HIGH
 Temperature:25.3°C
 Operators:DAMIN
 Test Date:2023-11-10

γ Range: 0 - 180DEG
 γ Interval: 5.0DEG
 Test System:EVERFINE GO-2000B_V1 SYSTEM V2.00.473
 Humidity:65.0%
 Test Distance:9.401m [K=1.0000]
 Remarks:

AAI Figure

Test:U:220.32V I:0.0595A P:7.2060W PF:0.5493 Freq:50.00Hz Lamp Flux:764.40lx1 lm		
NAME: 射灯	TYPE:	WEIGHT:
SPEC.:	DIM.:	SERIAL No.:
MFR.: EVERFINE	SUR.: 42mm	Shielding Angle:



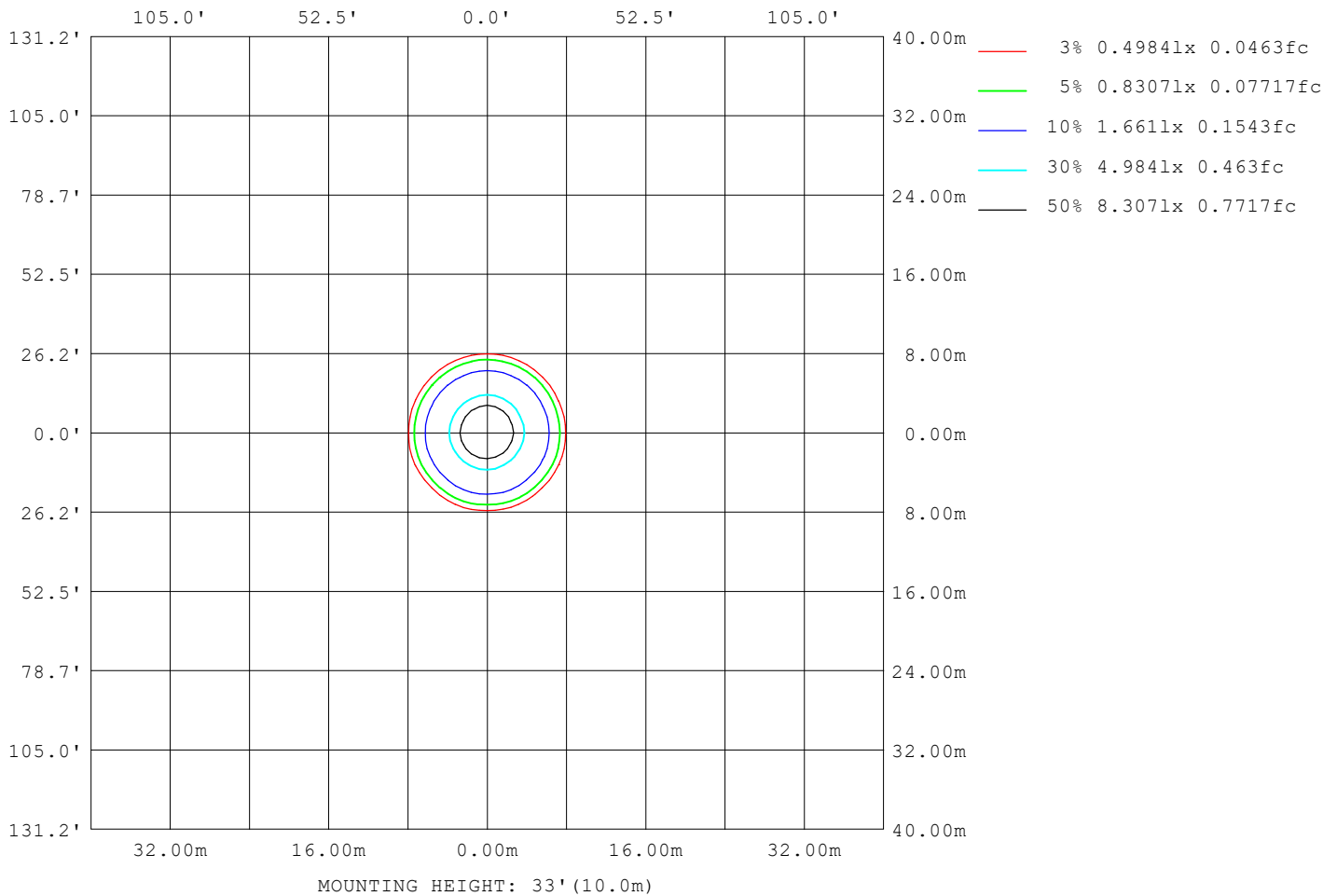
Note:The Curves indicate the illuminated area and the average illumination when the luminaire is at different distance.

C Range: 0 - 360DEG
C Interval: 22.5DEG
Test Speed: HIGH
Temperature:25.3°C
Operators:DAMIN
Test Date:2023-11-10

γ Range: 0 - 180DEG
γ Interval: 5.0DEG
Test System:EVERFINE GO-2000B_V1 SYSTEM V2.00.473
Humidity:65.0%
Test Distance:9.401m [K=1.0000]
Remarks:

ISOLUX DIAGRAM

Test:U:220.32V I:0.0595A P:7.2060W PF:0.5493 Freq:50.00Hz Lamp Flux:764.401x1 lm		
NAME: 射灯	TYPE:	WEIGHT:
SPEC.:	DIM.:	SERIAL No.:
MFR.: EVERFINE	SUR.: 42mm	Shielding Angle:



C Range: 0 - 360DEG
C Interval: 22.5DEG
Test Speed: HIGH
Temperature:25.3°C
Operators:DAMIN
Test Date:2023-11-10

γ Range: 0 - 180DEG
γ Interval: 5.0DEG
Test System:EVERFINE GO-2000B_V1 SYSTEM V2.00.473
Humidity:65.0%
Test Distance:9.401m [K=1.0000]
Remarks:

LED Avg.L Report

Test:U:220.32V I:0.0595A P:7.2060W PF:0.5493 Freq:50.00Hz Lamp Flux:764.401x1 lm		
NAME: 射灯	TYPE:	WEIGHT:
SPEC.:	DIM.:	SERIAL No.:
MFR.: EVERFINE	SUR.: 42mm	Shielding Angle:

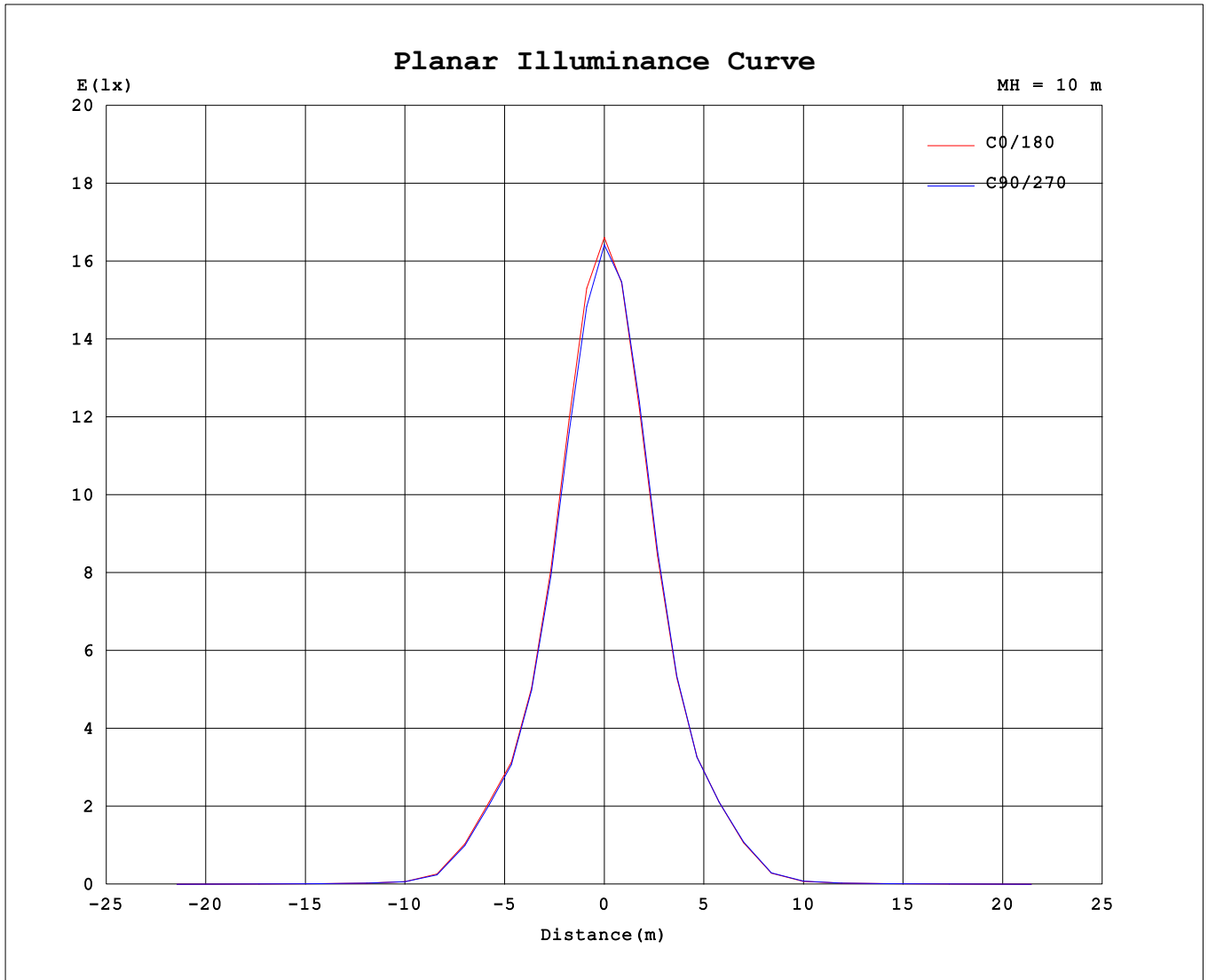
AvgL	cd/m2
L_0~180 (65) av	196
L_0~180 (75) av	214
L_0~180 (85) av	21
L_90~270 (65) av	194
L_90~270 (75) av	215
L_90~270 (85) av	16
L_45 (65) av	196
L_45 (75) av	216
L_45 (85) av	18

Standard: GB/T 29293-2012

C Range: 0 - 360DEG
 C Interval: 22.5DEG
 Test Speed: HIGH
 Temperature:25.3°C
 Operators:DAMIN
 Test Date:2023-11-10

γ Range: 0 - 180DEG
 γ Interval: 5.0DEG
 Test System:EVERFINE GO-2000B_V1 SYSTEM V2.00.473
 Humidity:65.0%
 Test Distance:9.401m [K=1.0000]
 Remarks:

Planar Illuminance Curve



C Range: 0 - 360DEG
 C Interval: 22.5DEG
 Test Speed: HIGH
 Temperature: 25.3°C
 Operators: DAMIN
 Test Date: 2023-11-10

γ Range: 0 - 180DEG
 γ Interval: 5.0DEG
 Test System: EVERFINE GO-2000B_V1 SYSTEM V2.00.473
 Humidity: 65.0%
 Test Distance: 9.401m [K=1.0000]
 Remarks:

LUMINOUS DISTRIBUTION INTENSITY DATA

Test:U:220.32V I:0.0595A P:7.2060W PF:0.5493 Freq:50.00Hz Lamp Flux:764.401x1 lm		
NAME: 射灯	TYPE:	WEIGHT:
SPEC.:	DIM.:	SERIAL No.:
MFR.: EVERFINE	SUR.: 42mm	Shielding Angle:

Table--1

UNIT: cd

C (DEG) \ γ (DEG)	0	22.5	45	67.5	90	112.5	135	157.5	180	202.5	225	247.5	270	292.5	315	337.5			
0	1646	1646	1646	1646	1646	1646	1646	1646	1646	1646	1646	1646	1646	1646	1646	1646			
5	1534	1527	1510	1514	1505	1518	1522	1542	1548	1557	1571	1570	1569	1558	1557	1541			
10	1239	1230	1219	1225	1218	1239	1246	1270	1269	1270	1285	1286	1302	1287	1280	1243			
15	889	881	868	882	881	905	910	932	928	933	947	944	954	940	933	896			
20	603	598	589	600	602	618	620	634	634	636	641	639	646	637	632	608			
25	418	414	409	415	414	424	428	437	436	436	441	437	440	433	433	418			
30	323	322	318	321	316	322	321	325	323	322	325	323	326	324	330	322			
35	188	187	183	184	181	189	188	195	192	190	196	194	199	192	195	187			
40	58.0	57.4	54.8	55.7	54.0	58.2	58.3	64.3	63.1	63.8	67.2	65.1	66.6	63.0	62.5	56.7			
45	19.8	19.8	19.0	19.4	19.4	20.6	20.9	22.3	22.4	23.2	23.9	22.9	22.8	21.7	21.1	19.5			
50	12.5	12.3	12.2	12.4	12.6	12.6	13.0	13.3	13.6	13.8	13.6	13.3	13.1	12.7	12.5	12.3			
55	9.74	9.66	9.62	9.81	9.92	10.2	10.6	11.1	11.4	11.6	11.4	11.1	10.8	10.3	10.0	9.70			
60	6.85	6.83	6.81	6.94	7.03	7.24	7.50	7.91	8.16	8.31	8.32	7.98	7.74	7.32	7.11	6.84			
65	4.62	4.58	4.58	4.68	4.76	4.88	5.12	5.32	5.34	5.44	5.36	5.27	5.06	4.90	4.78	4.61			
70	3.69	3.63	3.71	3.73	3.82	3.83	4.01	4.00	3.95	4.03	3.97	3.95	3.77	3.77	3.75	3.74			
75	3.26	3.21	3.32	3.34	3.41	3.38	3.46	3.39	3.38	3.41	3.34	3.38	3.27	3.35	3.31	3.32			
80	2.45	2.41	2.43	2.56	2.63	2.71	2.82	2.82	2.81	2.87	2.81	2.80	2.72	2.73	2.63	2.48			
85	0.09	0.02	0.09	0.02	0.10	0.02	0.10	0.11	0.13	0.16	0.15	0.14	0.07	0.10	0.03	0.09			
90	0.01	0.00	0.00	0.00	0.01	0.00	0.01	0.00	0.01	0.02	0.01	0.01	0.01	0.01	0.01	0.01			
95	0.00	0.01	0.00	0.01	0.00	0.02	0.00	0.01	0.02	0.01	0.02	0.01	0.01	0.01	0.02	0.01			
100	0.00	0.04	0.00	0.03	0.00	0.03	0.00	0.02	0.04	0.01	0.04	0.01	0.04	0.01	0.04	0.01			
105	0.01	0.07	0.01	0.08	0.01	0.07	0.01	0.06	0.10	0.04	0.10	0.04	0.10	0.04	0.11	0.05			
110	0.10	0.17	0.10	0.17	0.11	0.16	0.09	0.16	0.22	0.15	0.22	0.15	0.21	0.16	0.23	0.17			
115	0.27	0.32	0.26	0.33	0.26	0.31	0.25	0.31	0.41	0.34	0.39	0.34	0.40	0.34	0.42	0.36			
120	0.48	0.56	0.49	0.55	0.49	0.53	0.47	0.52	0.68	0.60	0.66	0.60	0.66	0.62	0.68	0.65			
125	0.82	0.88	0.83	0.88	0.83	0.85	0.78	0.83	1.05	0.98	1.02	0.97	1.03	0.99	1.07	1.04			
130	1.26	1.34	1.29	1.35	1.28	1.31	1.24	1.26	1.55	1.49	1.52	1.47	1.53	1.49	1.57	1.55			
135	1.84	1.90	1.86	1.91	1.86	1.87	1.79	1.80	2.17	2.09	2.12	2.08	2.14	2.11	2.19	2.18			
140	2.44	2.51	2.48	2.52	2.46	2.48	2.39	2.40	2.81	2.73	2.76	2.71	2.77	2.74	2.83	2.82			
145	3.05	3.13	3.08	3.14	3.08	3.09	2.99	3.00	3.42	3.34	3.37	3.32	3.38	3.34	3.44	3.44			
150	3.57	3.65	3.58	3.66	3.60	3.60	3.49	3.53	3.91	3.82	3.86	3.80	3.88	3.83	3.90	3.89			
155	3.91	3.98	3.90	4.00	3.93	3.94	3.83	3.88	4.17	4.08	4.13	4.09	4.20	4.11	4.18	4.13			
160	4.01	4.02	4.02	4.05	4.04	3.98	3.95	3.95	4.16	4.13	4.13	4.15	4.18	4.18	4.16	4.18			
165	4.01	3.98	4.02	4.04	4.04	3.97	3.95	3.91	4.06	4.07	4.00	4.12	4.12	4.17	4.05	4.11			
170	3.91	3.88	3.94	3.92	3.96	3.85	3.90	3.86	3.90	3.95	3.88	3.94	3.94	4.02	3.92	3.96			
175	3.86	3.87	3.91	3.87	3.86	3.85	3.87	3.86	3.85	3.86	3.87	3.83	3.84	3.91	3.89	3.89			
180	3.85	3.87	3.91	3.86	3.86	3.86	3.87	3.87	3.85	3.85	3.88	3.83	3.84	3.87	3.88	3.89			

C Range: 0 - 360DEG
 C Interval: 22.5DEG
 Test Speed: HIGH
 Temperature:25.3℃
 Operators:DAMIN
 Test Date:2023-11-10

γ Range: 0 - 180DEG
 γ Interval: 5.0DEG
 Test System:EVERFINE GO-2000B_V1 SYSTEM V2.00.473
 Humidity:65.0%
 Test Distance:9.401m [K=1.0000]
 Remarks: