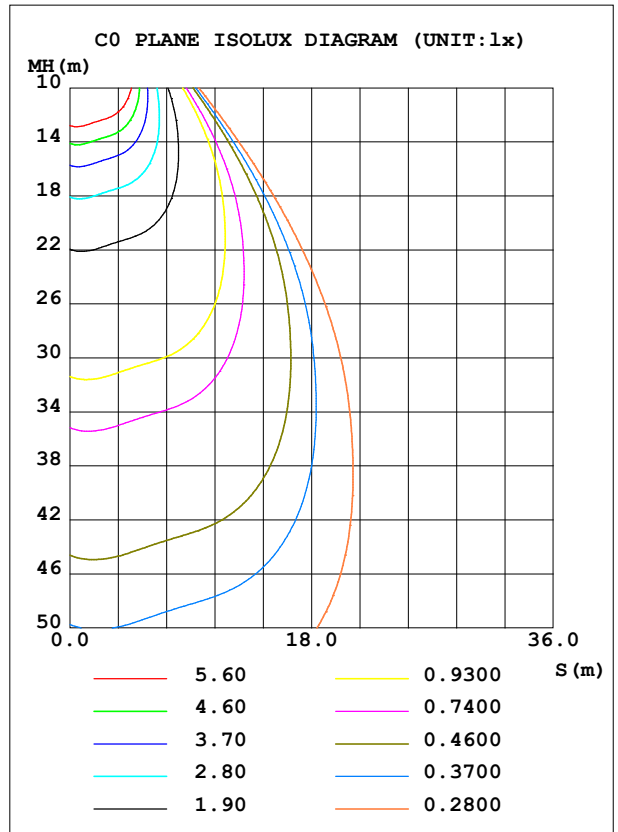
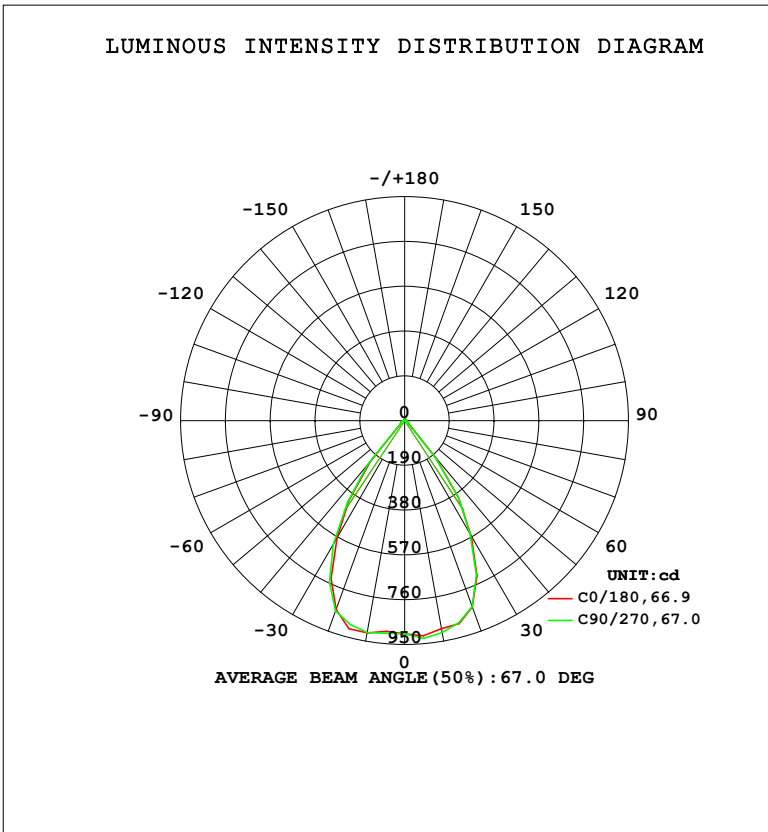


LUMINAIRE PHOTOMETRIC TEST REPORT

Test:U:220.38V I:0.0865A P:10.240W PF:0.5374 Freq:50.00Hz Lamp Flux:1051.92x1 lm		
NAME: 射灯	TYPE:	WEIGHT:
SPEC.:	DIM.:	SERIAL No.:
MFR.: EVERFINE	SUR.: 55mm	Shielding Angle:

DATA OF LAMP		PHOTOMETRIC DATA				Eff: 102.73 lm/W
MODEL	308	I <sub>max</sub> (cd)	930.1	S/MH (C0/180)	0.99	
NOMINAL POWER (W)	10	LOR (%)	100.0	S/MH (C90/270)	1.00	
RATED VOLTAGE (V)	220	TOTAL FLUX (lm)	1051.9	η UP, DN (C0-180)	0.5, 48.8	
NOMINAL FLUX (lm)	1051.92	CIE CLASS	DIRECT	η UP, DN (C180-360)	0.6, 50.2	
LAMPS INSIDE	1	η up (%)	1.1	CIBSE SHR NOM	1.00	
TEST VOLTAGE (V)	219.5	η down (%)	98.9	CIBSE SHR MAX	1.05	



C Range: 0 - 360DEG  
 C Interval: 22.5DEG  
 Test Speed: HIGH  
 Temperature: 25.3°C  
 Operators: DAMIN  
 Test Date: 2023-11-10

γ Range: 0 - 180DEG  
 γ Interval: 5.0DEG  
 Test System: EVERFINE GO-2000B\_V1 SYSTEM V2.00.473  
 Humidity: 65.0%  
 Test Distance: 9.401m [K=1.0000]  
 Remarks:

ZONAL FLUX DIAGRAM

ZONAL FLUX DIAGRAM:

$\gamma$	C0	C45	C90	C135	C180	C225	C270	C315	$\gamma$	$\Phi$ zone	$\Phi$ total	%lum, lamp
10	896.3	894.9	913.5	920.7	913.8	904.6	913.5	915.4	0- 10	86.84	86.84	8.26,8.26
20	840.9	843.4	837.8	851.0	852.9	855.7	857.9	854.6	10- 20	251.2	338.1	32.1,32.1
30	566.0	558.7	554.4	561.9	572.7	590.4	606.0	598.4	20- 30	332.8	670.8	63.8,63.8
40	206.7	202.4	204.2	214.6	226.0	240.2	245.0	231.1	30- 40	250.8	921.6	87.6,87.6
50	26.11	25.44	25.07	24.57	25.08	26.95	27.80	27.47	40- 50	65.73	987.3	93.9,93.9
60	18.87	18.35	17.42	17.15	17.68	18.42	18.77	18.83	50- 60	19.30	1007	95.7,95.7
70	17.05	16.79	15.65	15.12	15.35	15.58	16.23	16.81	60- 70	16.69	1023	97.3,97.3
80	12.14	8.557	4.874	8.695	12.94	10.44	8.084	10.02	70- 80	14.68	1038	98.7,98.7
90	0.0538	0.0483	0.0486	0.0545	0.0774	0.0662	0.0665	0.0605	80- 90	2.795	1041	98.9,98.9
100	0.0536	0.0541	0.0544	0.0664	0.1729	0.1567	0.1574	0.1634	90-100	0.0830	1041	98.9,98.9
110	0.3805	0.3904	0.3984	0.3802	0.5663	0.5600	0.5447	0.5628	100-110	0.2829	1041	99,99
120	1.071	1.094	1.117	1.087	1.376	1.342	1.337	1.361	110-120	0.8176	1042	99.1,99.1
130	2.065	2.092	2.120	2.078	2.401	2.353	2.365	2.383	120-130	1.535	1043	99.2,99.2
140	3.077	3.114	3.124	3.063	3.425	3.369	3.386	3.422	130-140	2.115	1046	99.4,99.4
150	3.941	3.981	4.018	3.898	4.282	4.223	4.268	4.286	140-150	2.309	1048	99.6,99.6
160	4.536	4.576	4.617	4.502	4.871	4.800	4.884	4.866	150-160	2.038	1050	99.8,99.8
170	5.262	5.322	5.336	5.269	5.532	5.462	5.501	5.519	160-170	1.421	1051	99.9,99.9
180	5.978	5.990	5.953	6.002	6.007	6.008	5.972	6.014	170-180	0.5413	1052	100,100
DEG	LUMINOUS INTENSITY:cd									UNIT:lm		

Conical surface Flux(90deg): 971.91 lm

%lum = 92.4%

%lamp = 92.4%

Conical surface Flux(130deg): 1015 lm

%lum = 96.5%

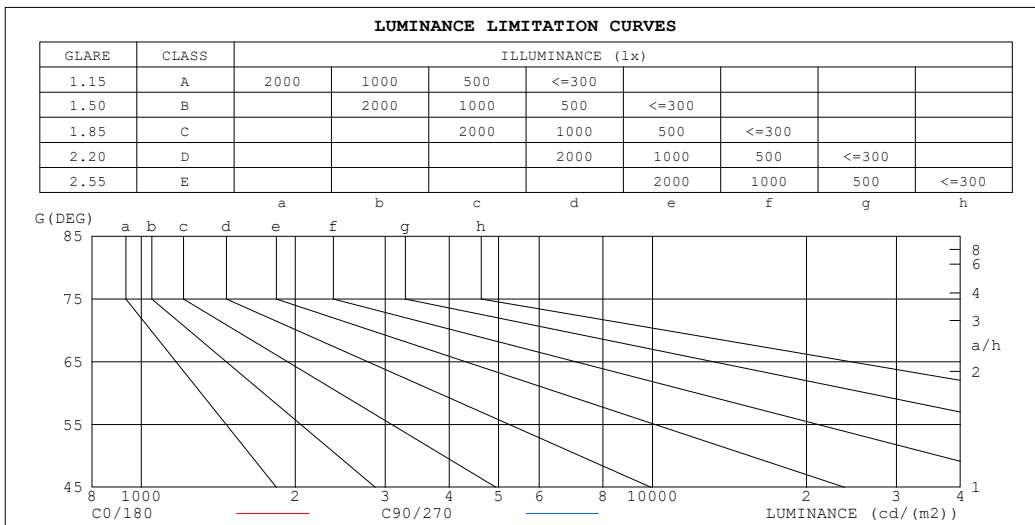
%lamp = 96.5%

C Range: 0 - 360DEG  
 C Interval: 22.5DEG  
 Test Speed: HIGH  
 Temperature:25.3°C  
 Operators:DAMIN  
 Test Date:2023-11-10

$\gamma$  Range: 0 - 180DEG  
 $\gamma$  Interval: 5.0DEG  
 Test System:EVERFINE GO-2000B\_V1 SYSTEM V2.00.473  
 Humidity:65.0%  
 Test Distance:9.401m [K=1.0000]  
 Remarks:

**LUMINANCE LIMITATION CURVES**

Test:U:220.38V I:0.0865A P:10.240W PF:0.5374 Freq:50.00Hz Lamp Flux:1051.92x1 lm		
NAME: 射灯	TYPE:	WEIGHT:
SPEC.:	DIM.:	SERIAL No.:
MFR.: EVERFINE	SUR.: 55mm	Shielding Angle:



LUMINANCE cd/ (m2)		
G (DEG)	C0/180	C90/270
85	104	22
80	822	325
75	720	621
70	586	530
65	475	435
60	444	404
55	443	407
50	478	452
45	792	799

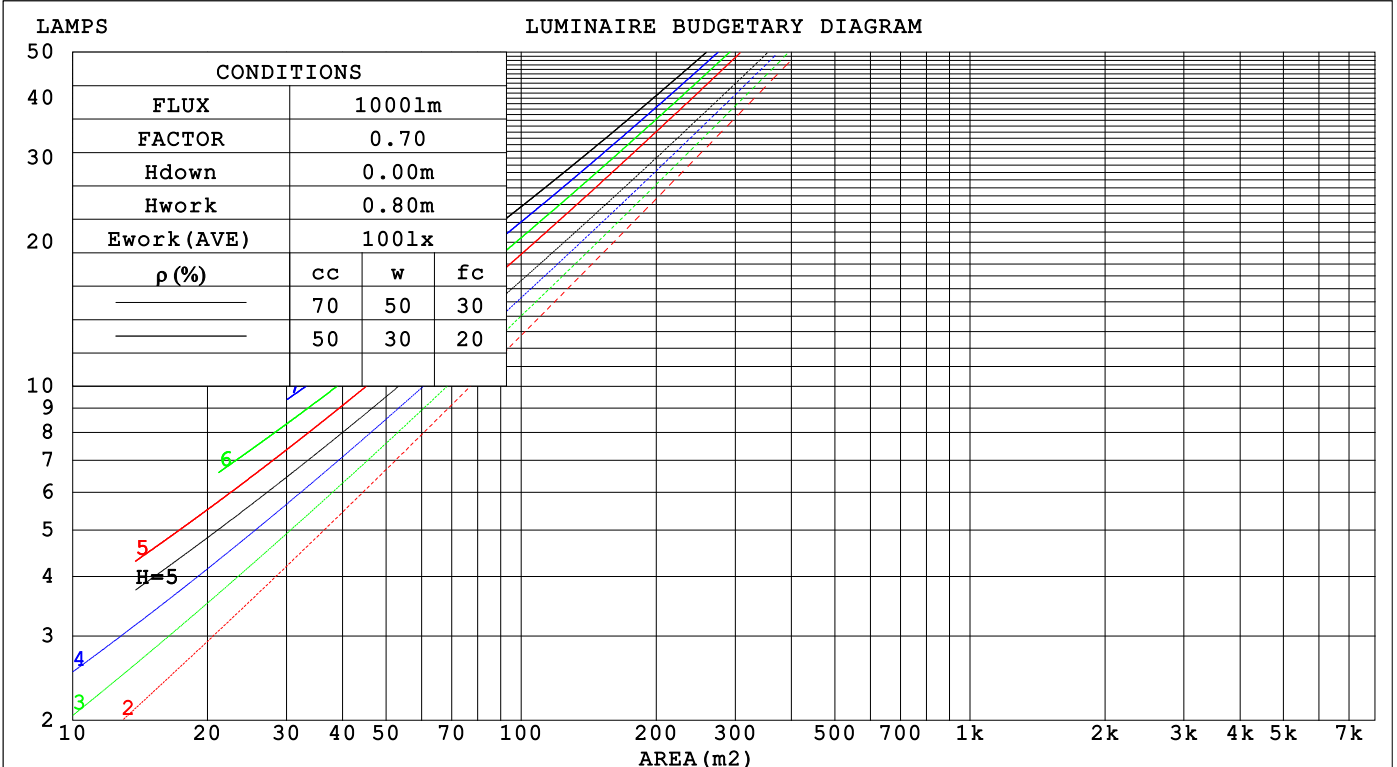
C Range: 0 - 360DEG  
 C Interval: 22.5DEG  
 Test Speed: HIGH  
 Temperature:25.3°C  
 Operators:DAMIN  
 Test Date:2023-11-10

γ Range: 0 - 180DEG  
 γ Interval: 5.0DEG  
 Test System:EVERFINE GO-2000B\_V1 SYSTEM V2.00.473  
 Humidity:65.0%  
 Test Distance:9.401m [K=1.0000]  
 Remarks:

**CU AND LUMINAIRE BUDGETARY ESTIMATE DIAGRAM**

Test:U:220.38V I:0.0865A P:10.240W PF:0.5374 Freq:50.00Hz Lamp Flux:1051.92x1 lm		
NAME: 射灯	TYPE:	WEIGHT:
SPEC.:	DIM.:	SERIAL No.:
MFR.: EVERFINE	SUR.: 55mm	Shielding Angle:

pcc	80%			70%			50%			30%			10%			0
pw	50%	30%	10%	50%	30%	10%	50%	30%	10%	50%	30%	10%	50%	30%	10%	0
pfc	20%			20%			20%			20%			20%			0
RCR	RCR:Room Cavity Ratio      Coefficients of Utilization(CU)															
0.0	1.19	1.19	1.19	1.16	1.16	1.16	1.11	1.11	1.11	1.06	1.06	1.06	1.01	1.01	1.01	.99
1.0	1.09	1.07	1.04	1.07	1.05	1.03	1.03	1.01	.99	.99	.97	.96	.95	.94	.93	.91
2.0	1.01	.97	.93	.99	.95	.92	.96	.92	.90	.93	.90	.87	.90	.87	.85	.84
3.0	.93	.88	.84	.92	.87	.83	.89	.85	.81	.87	.83	.80	.84	.81	.79	.77
4.0	.87	.81	.76	.85	.80	.76	.83	.78	.75	.81	.77	.74	.79	.76	.73	.71
5.0	.81	.74	.70	.80	.74	.69	.78	.73	.69	.76	.71	.68	.74	.70	.67	.66
6.0	.75	.69	.64	.74	.68	.64	.73	.67	.64	.71	.67	.63	.70	.66	.62	.61
7.0	.70	.64	.60	.70	.64	.59	.68	.63	.59	.67	.62	.59	.66	.61	.58	.57
8.0	.66	.60	.55	.65	.59	.55	.64	.59	.55	.63	.58	.55	.62	.58	.54	.53
9.0	.62	.56	.52	.61	.56	.51	.60	.55	.51	.59	.54	.51	.58	.54	.51	.49
10.0	.58	.52	.48	.58	.52	.48	.57	.52	.48	.56	.51	.48	.55	.51	.48	.46



C Range: 0 - 360DEG  
 C Interval: 22.5DEG  
 Test Speed: HIGH  
 Temperature:25.3°C  
 Operators:DAMIN  
 Test Date:2023-11-10

γ Range: 0 - 180DEG  
 γ Interval: 5.0DEG  
 Test System:EVERFINE GO-2000B\_V1 SYSTEM V2.00.473  
 Humidity:65.0%  
 Test Distance:9.401m [K=1.0000]  
 Remarks:

WEC AND CCEC

Test:U:220.38V I:0.0865A P:10.240W PF:0.5374 Freq:50.00Hz								
Lamp Flux:1051.92x1 lm								
NAME: 射灯			TYPE:			WEIGHT:		
SPEC.:			DIM.:			SERIAL No.:		
MFR.: EVERFINE			SUR.: 55mm			Shielding Angle:		

$\rho_{CC}$	80%			70%			50%			30%			10%			0
$\rho_w$	50%	30%	10%	50%	30%	10%	50%	30%	10%	50%	30%	10%	50%	30%	10%	0
$\rho_{fc}$	20%			20%			20%			20%			20%			0
RCR	RCR:Room Cavity Ratio						Wall Exitance Coefficients(WEC)									
0.0																
1.0	.197	.112	.036	.190	.108	.034	.177	.101	.032	.165	.095	.030	.153	.089	.029	
2.0	.188	.103	.032	.182	.100	.031	.171	.095	.029	.160	.090	.028	.151	.085	.027	
3.0	.178	.095	.028	.173	.093	.028	.163	.088	.027	.154	.084	.026	.146	.081	.025	
4.0	.169	.088	.026	.164	.086	.025	.156	.083	.025	.148	.079	.024	.140	.076	.023	
5.0	.160	.082	.024	.156	.080	.023	.149	.077	.023	.142	.075	.022	.135	.072	.022	
6.0	.152	.076	.022	.149	.075	.022	.142	.073	.021	.136	.071	.021	.130	.068	.020	
7.0	.145	.072	.020	.142	.071	.020	.136	.069	.020	.130	.067	.019	.125	.065	.019	
8.0	.138	.068	.019	.135	.067	.019	.130	.065	.019	.125	.063	.018	.120	.062	.018	
9.0	.132	.064	.018	.130	.063	.018	.125	.062	.017	.120	.060	.017	.116	.059	.017	
10.0	.126	.061	.017	.124	.060	.017	.120	.059	.017	.116	.057	.016	.112	.056	.016	

$\rho_{CC}$	80%			70%			50%			30%			10%			0
$\rho_w$	50%	30%	10%	50%	30%	10%	50%	30%	10%	50%	30%	10%	50%	30%	10%	0
$\rho_{fc}$	20%			20%			20%			20%			20%			0
RCR	RCR:Room Cavity Ratio						Ceiling Cavity Exitance Coefficients(CCEC)									
0.0	.199	.199	.199	.170	.170	.170	.116	.116	.116	.067	.067	.067	.021	.021	.021	
1.0	.181	.165	.151	.155	.142	.130	.106	.098	.090	.061	.056	.052	.019	.018	.017	
2.0	.167	.141	.119	.143	.121	.103	.098	.084	.072	.056	.049	.042	.018	.016	.014	
3.0	.155	.122	.096	.133	.105	.083	.091	.073	.058	.053	.043	.034	.017	.014	.011	
4.0	.145	.107	.079	.125	.093	.068	.086	.065	.048	.050	.038	.028	.016	.012	.009	
5.0	.137	.096	.066	.118	.083	.057	.081	.058	.041	.047	.034	.024	.015	.011	.008	
6.0	.130	.087	.056	.112	.075	.049	.077	.053	.035	.045	.031	.021	.014	.010	.007	
7.0	.123	.080	.049	.106	.069	.043	.073	.048	.030	.043	.028	.018	.014	.009	.006	
8.0	.118	.074	.043	.101	.064	.038	.070	.045	.027	.041	.026	.016	.013	.009	.005	
9.0	.113	.068	.039	.097	.059	.034	.067	.042	.024	.039	.025	.014	.013	.008	.005	
10.0	.108	.064	.035	.093	.056	.030	.065	.039	.022	.038	.023	.013	.012	.008	.004	

C Range: 0 - 360DEG  
 C Interval: 22.5DEG  
 Test Speed: HIGH  
 Temperature:25.3°C  
 Operators:DAMIN  
 Test Date:2023-11-10

$\gamma$  Range: 0 - 180DEG  
 $\gamma$  Interval: 5.0DEG  
 Test System:EVERFINE GO-2000B\_V1 SYSTEM V2.00.473  
 Humidity:65.0%  
 Test Distance:9.401m [K=1.0000]  
 Remarks:

**UGR(Unified Glare Rating) Table**

Test:U:220.38V I:0.0865A P:10.240W PF:0.5374 Freq:50.00Hz Lamp Flux:1051.92x1 lm		
NAME: 射灯	TYPE:	WEIGHT:
SPEC.:	DIM.:	SERIAL No.:
MFR.: EVERFINE	SUR.: 55mm	Shielding Angle:

ceiling/cavity	0.7	0.7	0.5	0.5	0.3	0.7	0.7	0.5	0.5	0.3
walls	0.5	0.3	0.5	0.3	0.3	0.5	0.3	0.5	0.3	0.3
working plane	0.2	0.2	0.2	0.2	0.2	0.2	0.2	0.2	0.2	0.2

Room dimensions	Viewed crosswise					Viewed endwise				
x = 2H y = 2H	9.2	10.2	9.5	10.4	10.6	9.2	10.2	9.4	10.4	10.6
3H	9.6	10.6	9.9	10.8	11.0	9.6	10.5	9.9	10.8	11.0
4H	10.2	11.1	10.5	11.3	11.6	9.9	10.8	10.2	11.1	11.3
6H	10.8	11.6	11.1	11.9	12.1	10.0	10.8	10.3	11.1	11.4
8H	10.7	11.5	11.1	11.8	12.1	10.0	10.8	10.3	11.0	11.3
12H	10.7	11.4	11.0	11.7	12.0	9.9	10.7	10.2	11.0	11.3
4H 2H	9.1	10.0	9.4	10.3	10.5	9.1	10.0	9.4	10.2	10.5
3H	9.9	10.6	10.2	10.9	11.2	9.8	10.6	10.2	10.9	11.2
4H	10.7	11.4	11.0	11.7	12.0	10.3	11.0	10.7	11.3	11.7
6H	11.4	12.0	11.8	12.4	12.8	10.4	11.1	10.8	11.4	11.8
8H	11.4	11.9	11.8	12.3	12.7	10.4	11.0	10.8	11.3	11.7
12H	11.3	11.8	11.8	12.2	12.7	10.3	10.9	10.8	11.3	11.7
8H 4H	10.9	11.5	11.3	11.8	12.2	10.5	11.1	10.9	11.5	11.9
6H	11.7	12.1	12.1	12.5	13.0	10.7	11.2	11.2	11.6	12.0
8H	11.6	12.0	12.1	12.5	12.9	10.7	11.1	11.1	11.5	12.0
12H	11.6	11.9	12.1	12.4	12.9	10.6	11.0	11.1	11.4	11.9
12H 4H	10.9	11.4	11.3	11.8	12.2	10.5	11.0	10.9	11.4	11.8
6H	11.6	12.0	12.1	12.5	12.9	10.7	11.1	11.2	11.5	12.0
8H	11.6	11.9	12.1	12.4	12.9	10.6	11.0	11.1	11.4	11.9

Variations with the observer position at spacings(CIE Pub.117):		
S = 1.0H	+ 1.8 / - 1.8	+ 2.1 / - 2.4
1.5H	+ 3.6 / - 1.8	+ 4.1 / - 2.4
2.0H	+ 0.6 / - 0.4	+ 1.3 / - 1.3

CIE Pub.117, 1052 lm Total Lamp Luminous Flux Correct (8log(F/F0) = 0.2)  
Area: 0.086 m2

C Range: 0 - 360DEG  
C Interval: 22.5DEG  
Test Speed: HIGH  
Temperature:25.3°C  
Operators:DAMIN  
Test Date:2023-11-10

γ Range: 0 - 180DEG  
γ Interval: 5.0DEG  
Test System:EVERFINE GO-2000B\_V1 SYSTEM V2.00.473  
Humidity:65.0%  
Test Distance:9.401m [K=1.0000]  
Remarks:

**UTILIZATION FACTORS TABLE**

Test:U:220.38V I:0.0865A P:10.240W PF:0.5374 Freq:50.00Hz Lamp Flux:1051.92x1 lm		
NAME: 射灯	TYPE:	WEIGHT:
SPEC.:	DIM.:	SERIAL No.:
MFR.: EVERFINE	SUR.: 55mm	Shielding Angle:

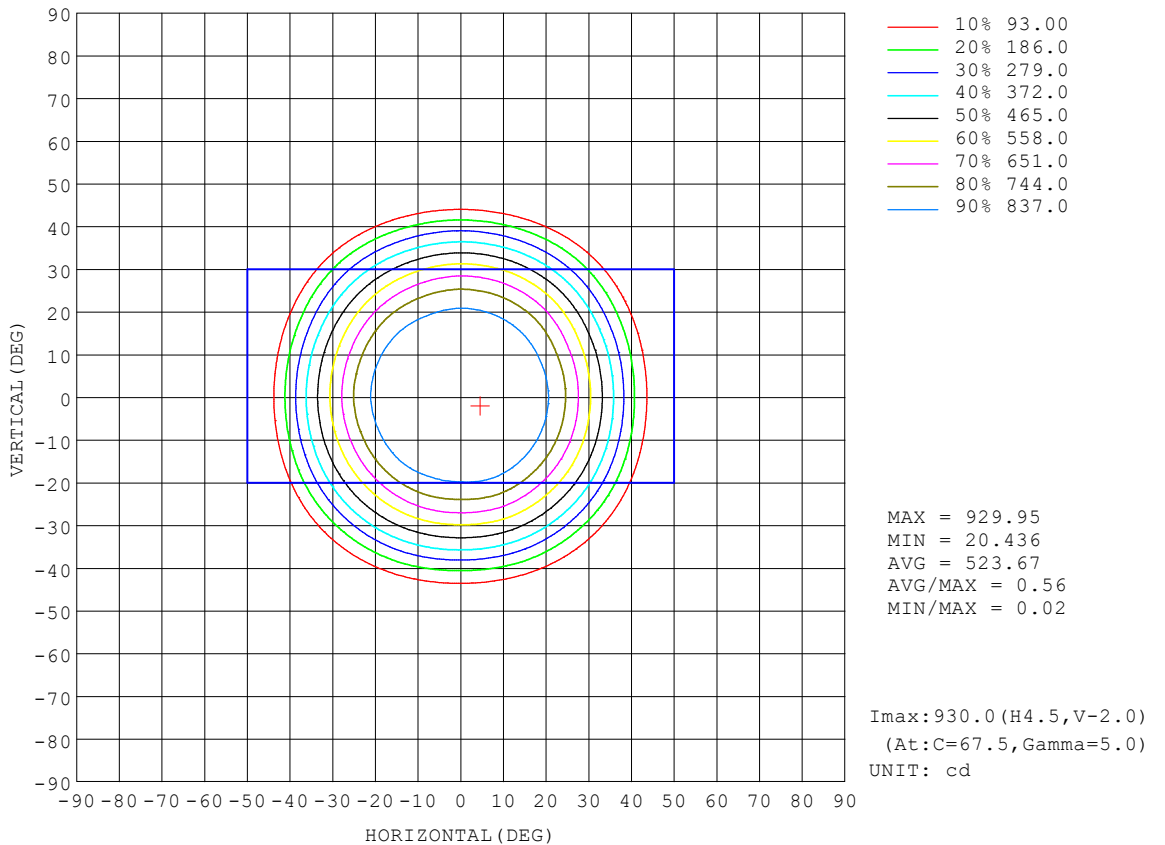
REFLECTANCE										
Ceiling	0.8	0.8	0.8	0.7	0.7	0.7	0.5	0.5	0.5	0
Walls	0.7	0.5	0.3	0.7	0.5	0.3	0.7	0.5	0.3	0
Working plane	0.2	0.2	0.2	0.2	0.2	0.2	0.2	0.2	0.2	0
ROOM INDEX	UTILIZATION FACTORS (PERCENT) $k(RI) \times RCR = 5$									
k = 0.60	84	77	73	83	77	73	83	76	73	69
0.80	92	85	81	91	85	81	90	84	80	76
1.00	96	90	86	95	90	86	94	90	85	81
1.25	101	95	91	100	94	91	97	93	90	85
1.50	104	98	95	102	98	94	100	96	93	88
2.00	107	102	99	105	101	98	102	99	96	90
2.50	109	104	101	107	103	100	104	101	98	92
3.00	110	107	104	108	105	102	105	102	100	93
4.00	113	110	107	110	108	106	107	104	103	95
5.00	114	111	109	112	110	108	108	106	104	96
ROOM INDEX	UF(total)									Direct
According to DIN EN 13032-2 2004			Suspended				SHRNOM = 1.25			

C Range: 0 - 360DEG  
 C Interval: 22.5DEG  
 Test Speed: HIGH  
 Temperature:25.3°C  
 Operators:DAMIN  
 Test Date:2023-11-10

$\gamma$  Range: 0 - 180DEG  
 $\gamma$  Interval: 5.0DEG  
 Test System:EVERFINE GO-2000B\_V1 SYSTEM V2.00.473  
 Humidity:65.0%  
 Test Distance:9.401m [K=1.0000]  
 Remarks:

**ISOCANDELA DIAGRAM**

Test:U:220.38V I:0.0865A P:10.240W PF:0.5374 Freq:50.00Hz Lamp Flux:1051.92x1 lm		
NAME: 射灯	TYPE:	WEIGHT:
SPEC.:	DIM.:	SERIAL No.:
MFR.: EVERFINE	SUR.: 55mm	Shielding Angle:



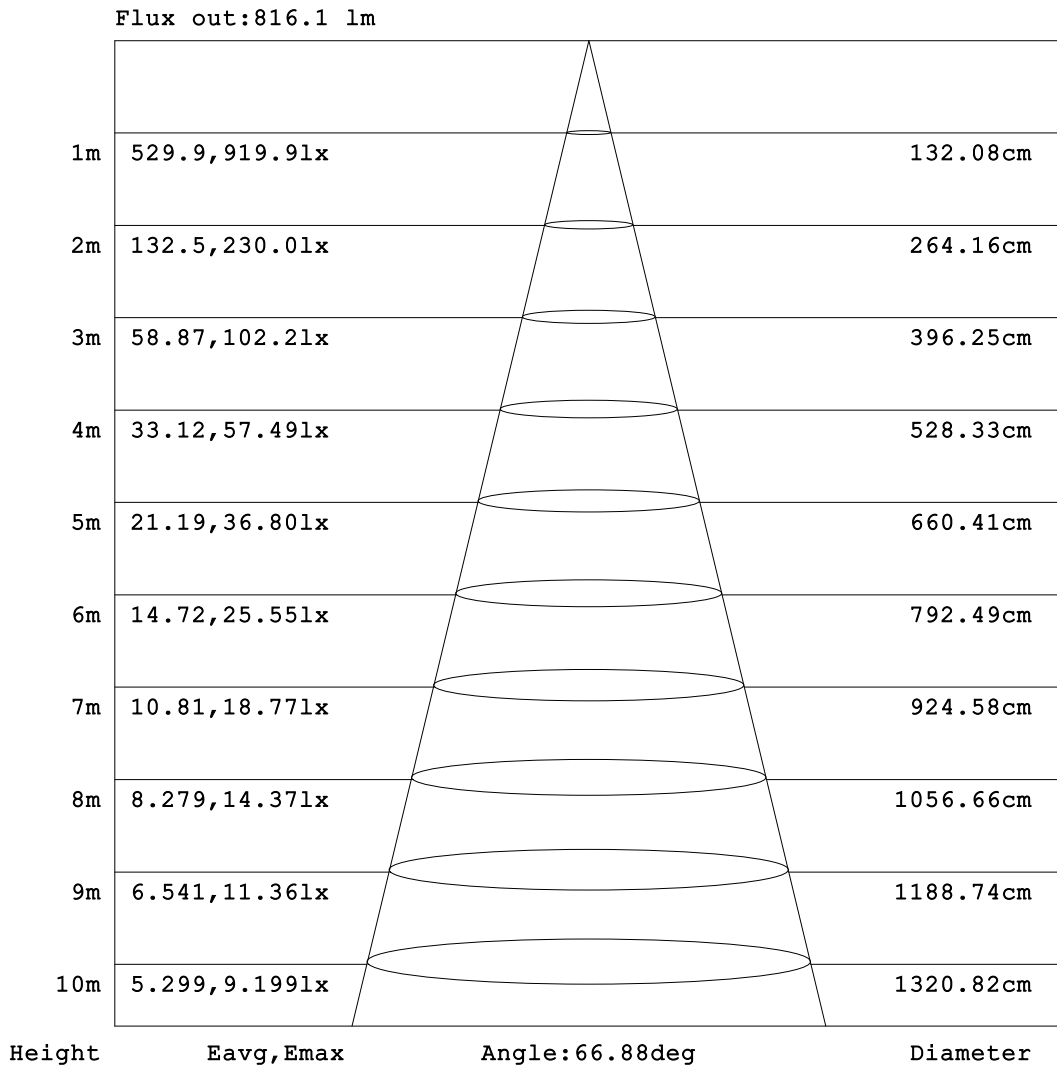
C Range: 0 - 360DEG  
 C Interval: 22.5DEG  
 Test Speed: HIGH  
 Temperature:25.3°C  
 Operators:DAMIN  
 Test Date:2023-11-10

γ Range: 0 - 180DEG  
 γ Interval: 5.0DEG  
 Test System:EVERFINE GO-2000B\_V1 SYSTEM V2.00.473  
 Humidity:65.0%  
 Test Distance:9.401m [K=1.0000]  
 Remarks:



**AAI Figure**

Test:U:220.38V I:0.0865A P:10.240W PF:0.5374 Freq:50.00Hz Lamp Flux:1051.92x1 lm		
NAME: 射灯	TYPE:	WEIGHT:
SPEC.:	DIM.:	SERIAL No.:
MFR.: EVERFINE	SUR.: 55mm	Shielding Angle:



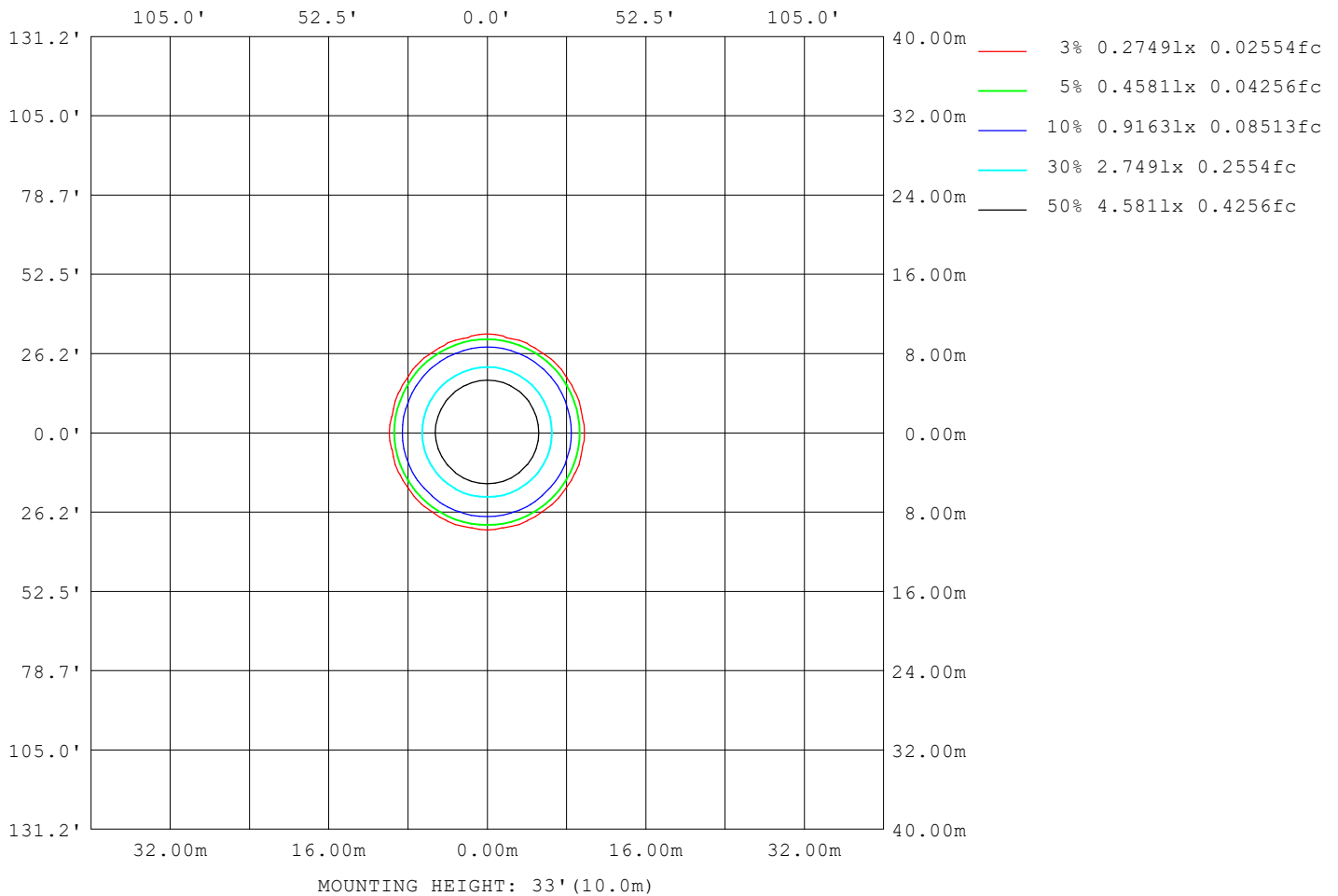
Note:The Curves indicate the illuminated area and the average illumination when the luminaire is at different distance.

C Range: 0 - 360DEG  
C Interval: 22.5DEG  
Test Speed: HIGH  
Temperature:25.3°C  
Operators:DAMIN  
Test Date:2023-11-10

γ Range: 0 - 180DEG  
γ Interval: 5.0DEG  
Test System:EVERFINE GO-2000B\_V1 SYSTEM V2.00.473  
Humidity:65.0%  
Test Distance:9.401m [K=1.0000]  
Remarks:

**ISOLUX DIAGRAM**

Test:U:220.38V I:0.0865A P:10.240W PF:0.5374 Freq:50.00Hz Lamp Flux:1051.92x1 lm		
NAME: 射灯	TYPE:	WEIGHT:
SPEC.:	DIM.:	SERIAL No.:
MFR.: EVERFINE	SUR.: 55mm	Shielding Angle:



C Range: 0 - 360DEG  
C Interval: 22.5DEG  
Test Speed: HIGH  
Temperature:25.3°C  
Operators:DAMIN  
Test Date:2023-11-10

γ Range: 0 - 180DEG  
γ Interval: 5.0DEG  
Test System:EVERFINE GO-2000B\_V1 SYSTEM V2.00.473  
Humidity:65.0%  
Test Distance:9.401m [K=1.0000]  
Remarks:

**LED Avg.L Report**

Test:U:220.38V I:0.0865A P:10.240W PF:0.5374 Freq:50.00Hz Lamp Flux:1051.92x1 lm		
NAME: 射灯	TYPE:	WEIGHT:
SPEC.:	DIM.:	SERIAL No.:
MFR.: EVERFINE	SUR.: 55mm	Shielding Angle:

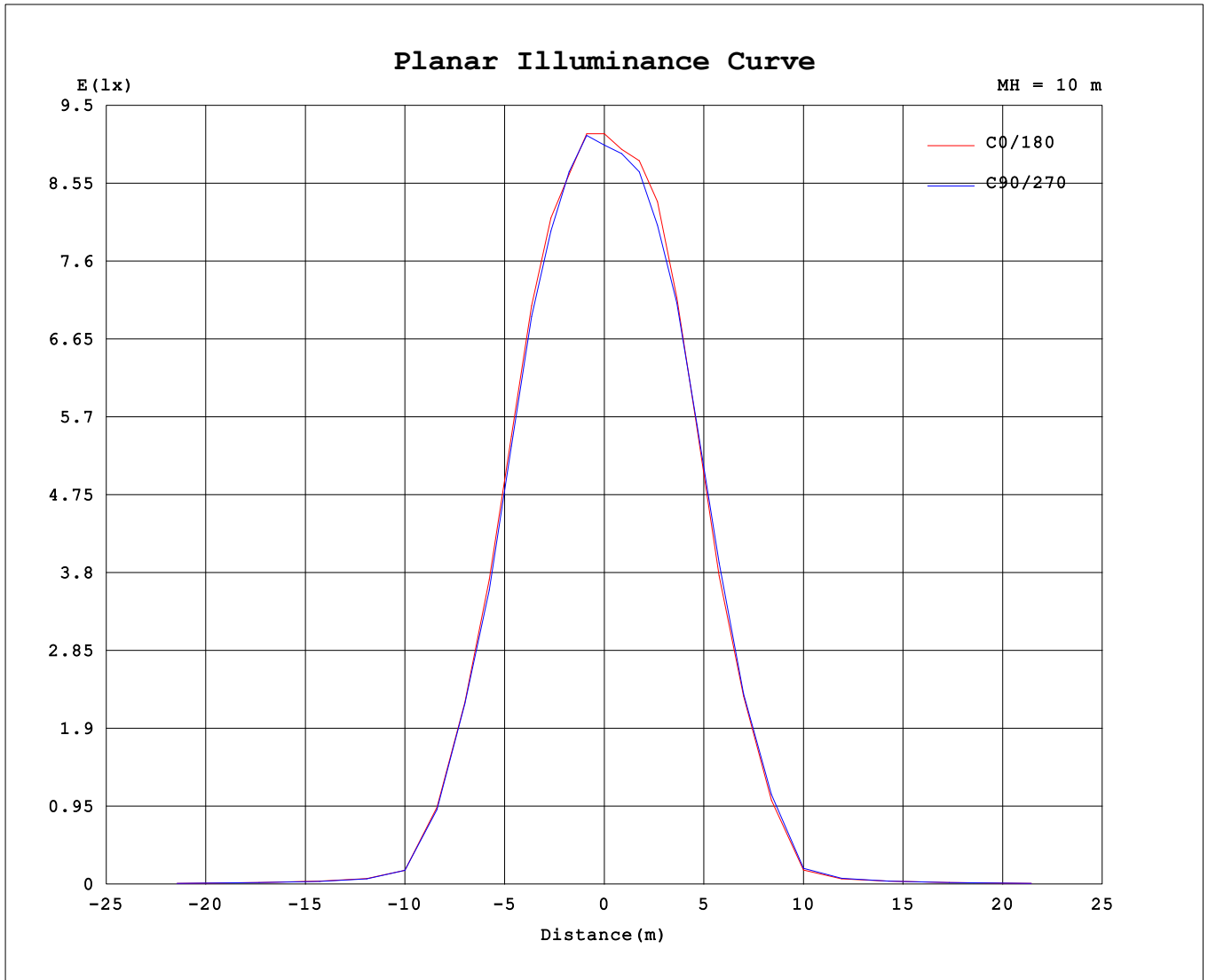
AvgL	cd/m2
L_0~180 (65) av	455
L_0~180 (75) av	702
L_0~180 (85) av	141
L_90~270 (65) av	451
L_90~270 (75) av	643
L_90~270 (85) av	25
L_45 (65) av	454
L_45 (75) av	674
L_45 (85) av	26

Standard: GB/T 29293-2012

C Range: 0 - 360DEG  
 C Interval: 22.5DEG  
 Test Speed: HIGH  
 Temperature:25.3°C  
 Operators:DAMIN  
 Test Date:2023-11-10

γ Range: 0 - 180DEG  
 γ Interval: 5.0DEG  
 Test System:EVERFINE GO-2000B\_V1 SYSTEM V2.00.473  
 Humidity:65.0%  
 Test Distance:9.401m [K=1.0000]  
 Remarks:

**Planar Illuminance Curve**



C Range: 0 - 360DEG  
 C Interval: 22.5DEG  
 Test Speed: HIGH  
 Temperature: 25.3°C  
 Operators: DAMIN  
 Test Date: 2023-11-10

γ Range: 0 - 180DEG  
 γ Interval: 5.0DEG  
 Test System: EVERFINE GO-2000B\_V1 SYSTEM V2.00.473  
 Humidity: 65.0%  
 Test Distance: 9.401m [K=1.0000]  
 Remarks:

LUMINOUS DISTRIBUTION INTENSITY DATA

Test:U:220.38V I:0.0865A P:10.240W PF:0.5374 Freq:50.00Hz Lamp Flux:1051.92x1 lm		
NAME: 射灯	TYPE:	WEIGHT:
SPEC.:	DIM.:	SERIAL No.:
MFR.: EVERFINE	SUR.: 55mm	Shielding Angle:

Table--1

UNIT: cd

C (DEG) \ γ (DEG)	0	22.5	45	67.5	90	112.5	135	157.5	180	202.5	225	247.5	270	292.5	315	337.5			
0	905	905	905	905	905	905	905	905	905	905	905	905	905	905	905	905			
5	916	926	926	930	927	922	912	903	897	898	899	900	905	903	902	906			
10	896	897	895	904	913	919	921	924	914	905	905	907	913	923	915	907			
15	892	890	891	888	888	895	897	911	914	910	902	896	895	896	900	901			
20	841	842	843	846	838	840	851	855	853	855	856	851	858	856	855	850			
25	726	727	725	728	721	729	733	739	740	741	748	749	756	755	750	737			
30	566	565	559	562	554	560	562	571	573	579	590	597	606	605	598	577			
35	399	401	400	404	402	408	411	416	413	412	416	418	424	423	415	404			
40	207	209	202	208	204	214	215	225	226	227	240	239	245	238	231	215			
45	47.6	47.3	47.1	48.1	48.7	49.5	48.5	48.9	49.1	49.9	53.5	54.2	55.7	52.8	52.0	49.2			
50	26.1	25.9	25.4	25.2	25.1	25.4	24.6	25.0	25.1	25.8	27.0	27.3	27.8	27.4	27.5	26.8			
55	21.6	21.4	20.9	20.5	20.1	20.2	19.8	20.1	20.3	21.0	21.3	21.5	21.8	21.8	21.9	21.7			
60	18.9	18.7	18.3	17.8	17.4	17.4	17.2	17.4	17.7	18.3	18.4	18.6	18.8	18.8	18.8	18.8			
65	17.1	17.1	17.0	16.3	15.9	15.7	15.6	15.8	16.0	16.5	16.5	16.8	16.9	17.0	17.0	16.9			
70	17.1	16.9	16.8	16.0	15.7	15.4	15.1	15.2	15.3	15.7	15.6	16.0	16.2	16.7	16.8	16.9			
75	15.9	15.6	14.9	14.2	13.9	14.3	14.5	15.1	15.4	15.6	15.1	14.6	14.8	14.9	15.5	15.8			
80	12.1	10.9	8.56	6.34	4.87	6.29	8.70	11.5	12.9	12.1	10.4	8.89	8.08	8.64	10.02	11.4			
85	0.77	0.42	0.18	0.08	0.16	0.10	0.17	0.29	1.34	0.62	0.22	0.26	0.21	0.26	0.21	0.47			
90	0.05	0.05	0.05	0.05	0.05	0.05	0.05	0.05	0.08	0.08	0.07	0.07	0.07	0.07	0.06	0.07			
95	0.05	0.07	0.05	0.07	0.05	0.07	0.05	0.07	0.10	0.07	0.08	0.06	0.08	0.07	0.08	0.07			
100	0.05	0.12	0.05	0.11	0.05	0.12	0.07	0.12	0.17	0.10	0.16	0.10	0.16	0.09	0.16	0.10			
105	0.17	0.23	0.19	0.25	0.19	0.24	0.18	0.24	0.32	0.25	0.31	0.24	0.31	0.25	0.31	0.26			
110	0.38	0.44	0.39	0.46	0.40	0.45	0.38	0.44	0.57	0.50	0.56	0.49	0.54	0.50	0.56	0.51			
115	0.68	0.75	0.70	0.77	0.72	0.77	0.69	0.73	0.93	0.86	0.91	0.85	0.91	0.85	0.92	0.88			
120	1.07	1.14	1.09	1.17	1.12	1.17	1.09	1.12	1.38	1.30	1.34	1.28	1.34	1.29	1.36	1.32			
125	1.54	1.61	1.57	1.64	1.59	1.64	1.56	1.59	1.88	1.80	1.84	1.78	1.84	1.79	1.86	1.83			
130	2.06	2.13	2.09	2.17	2.12	2.15	2.08	2.10	2.40	2.32	2.35	2.30	2.36	2.31	2.38	2.35			
135	2.56	2.64	2.60	2.68	2.63	2.65	2.57	2.60	2.92	2.85	2.88	2.82	2.90	2.85	2.91	2.88			
140	3.08	3.15	3.11	3.18	3.12	3.15	3.06	3.09	3.42	3.34	3.37	3.30	3.39	3.34	3.42	3.39			
145	3.54	3.63	3.57	3.64	3.60	3.58	3.51	3.55	3.88	3.79	3.83	3.75	3.85	3.80	3.89	3.86			
150	3.94	4.03	3.98	4.05	4.02	3.99	3.90	3.95	4.28	4.17	4.22	4.16	4.27	4.21	4.29	4.24			
155	4.26	4.35	4.29	4.39	4.35	4.31	4.23	4.28	4.60	4.48	4.55	4.48	4.62	4.56	4.61	4.54			
160	4.54	4.63	4.58	4.67	4.62	4.61	4.50	4.57	4.87	4.75	4.80	4.74	4.88	4.82	4.87	4.78			
165	4.88	4.97	4.91	5.05	4.99	4.97	4.85	4.91	5.17	5.06	5.09	5.07	5.19	5.15	5.15	5.07			
170	5.26	5.38	5.32	5.42	5.34	5.36	5.27	5.35	5.53	5.43	5.46	5.39	5.50	5.47	5.52	5.45			
175	5.69	5.80	5.76	5.82	5.70	5.77	5.73	5.76	5.87	5.79	5.86	5.74	5.82	5.81	5.91	5.82			
180	5.98	6.02	5.99	6.00	5.95	5.97	6.00	6.01	6.01	5.97	6.01	5.95	5.97	5.97	6.01	5.98			

C Range: 0 - 360DEG  
 C Interval: 22.5DEG  
 Test Speed: HIGH  
 Temperature:25.3℃  
 Operators:DAMIN  
 Test Date:2023-11-10

γ Range: 0 - 180DEG  
 γ Interval: 5.0DEG  
 Test System:EVERFINE GO-2000B\_V1 SYSTEM V2.00.473  
 Humidity:65.0%  
 Test Distance:9.401m [K=1.0000]  
 Remarks: