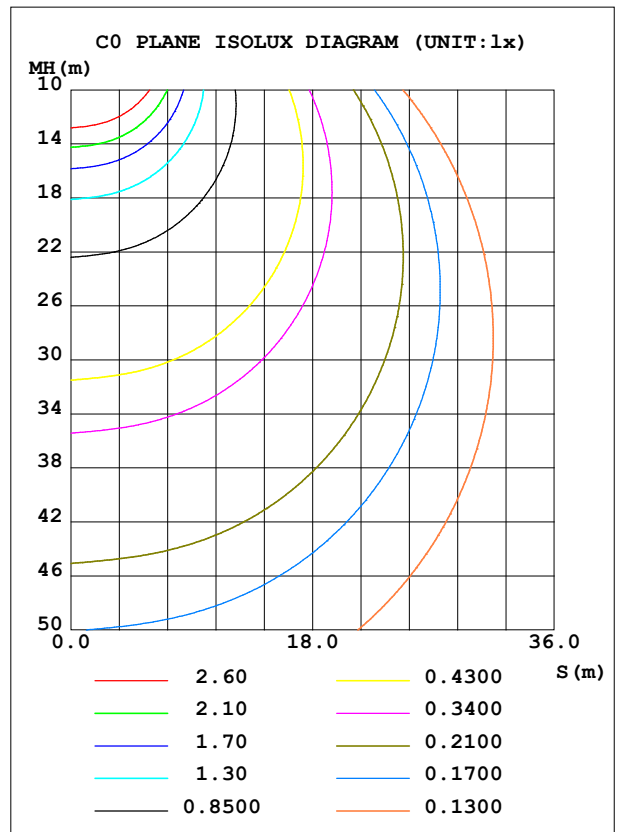
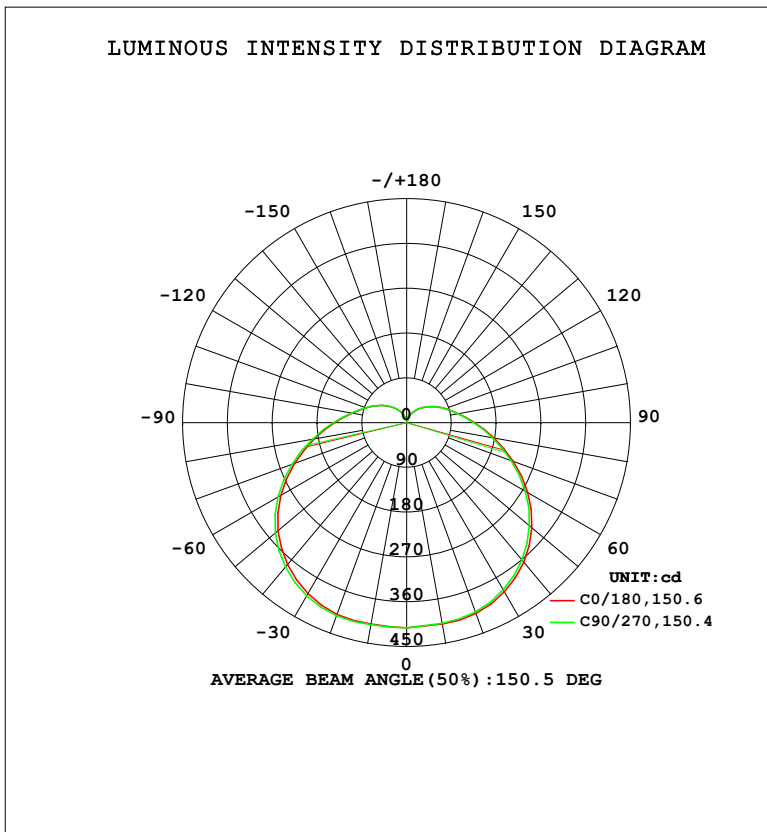


LUMINAIRE PHOTOMETRIC TEST REPORT

Test:U:220.33V I:0.1696A P:19.144W PF:0.5122 Freq:50.00Hz Lamp Flux:2219.55x1 lm		
NAME: 球泡	TYPE:	WEIGHT:
SPEC.:	DIM.:	SERIAL No.:
MFR.: EVERFINE	SUR.: 1	Shielding Angle:

DATA OF LAMP		PHOTOMETRIC DATA				Eff: 115.94 lm/W
MODEL	CF18	I _{max} (cd)	413.7	S/MH (C0/180)	1.44	
NOMINAL POWER (W)	20	LOR (%)	100.0	S/MH (C90/270)	1.45	
RATED VOLTAGE (V)	220	TOTAL FLUX (lm)	2219.6	η UP, DN (C0-180)	9.5, 39.4	
NOMINAL FLUX (lm)	2219.55	CIE CLASS	SEMI-D.	η UP, DN (C180-360)	10.0, 41.1	
LAMPS INSIDE	1	η up (%)	19.5	CIBSE SHR NOM	1.50	
TEST VOLTAGE (V)	219.5	η down (%)	80.5	CIBSE SHR MAX	1.55	



C Range: 0 - 360DEG
 C Interval: 22.5DEG
 Test Speed: HIGH
 Temperature: 25.3°C
 Operators: DAMIN
 Test Date: 2023-11-09

γ Range: 0 - 180DEG
 γ Interval: 5.0DEG
 Test System: EVERFINE GO-2000B_V1 SYSTEM V2.00.473
 Humidity: 65.0%
 Test Distance: 9.401m [K=1.0000]
 Remarks:

ZONAL FLUX DIAGRAM

ZONAL FLUX DIAGRAM:

γ	C0	C45	C90	C135	C180	C225	C270	C315	γ	Φ zone	Φ total	%lum,lamp
10	411.1	410.3	409.6	409.9	411.1	411.7	412.2	412.2	0- 10	39.23	39.23	1.77,1.77
20	407.8	405.5	404.9	405.9	409.9	412.2	412.6	411.0	10- 20	116.3	155.6	7.01,7.01
30	392.6	389.2	388.2	390.7	397.0	401.3	401.7	398.4	20- 30	186.2	341.7	15.4,15.4
40	366.1	361.2	360.6	364.0	372.6	378.2	378.9	373.3	30- 40	240.2	581.9	26.2,26.2
50	328.3	322.7	322.2	327.1	338.1	344.5	344.6	338.4	40- 50	272.3	854.2	38.5,38.5
60	281.0	274.9	274.9	280.6	292.2	298.5	298.6	291.6	50- 60	278.2	1132	51,51
70	228.2	222.6	223.2	229.2	239.8	245.1	245.4	238.6	60- 70	258.2	1391	62.7,62.7
80	178.6	173.9	175.0	180.3	188.4	192.3	192.6	187.0	70- 80	220.2	1611	72.6,72.6
90	136.7	133.6	134.6	138.8	144.7	147.1	147.3	143.1	80- 90	176.2	1787	80.5,80.5
100	105.5	103.5	104.5	107.5	111.4	112.6	112.6	110.0	90-100	135.3	1922	86.6,86.6
110	83.16	81.78	82.65	84.82	87.65	88.27	88.20	86.44	100-110	102.1	2024	91.2,91.2
120	65.17	64.12	64.93	66.71	68.95	69.50	69.34	67.85	110-120	75.56	2100	94.6,94.6
130	49.68	48.84	49.50	51.06	52.88	53.31	53.14	51.78	120-130	53.06	2153	97,97
140	35.97	35.27	35.84	37.19	38.76	39.14	38.90	37.70	130-140	34.35	2187	98.5,98.5
150	23.75	23.04	23.55	24.75	26.19	26.63	26.36	25.25	140-150	19.64	2207	99.4,99.4
160	13.13	12.57	12.98	13.97	15.21	15.54	15.25	14.31	150-160	9.102	2216	99.8,99.8
170	5.875	5.721	5.983	6.459	7.063	7.195	6.956	6.393	160-170	2.919	2219	100,100
180	4.734	4.760	4.752	4.753	4.839	4.796	4.782	4.765	170-180	0.5287	2220	100,100
DEG	LUMINOUS INTENSITY:cd									UNIT:lm		

Conical surface Flux(90deg): 715.62 lm

%lum = 32.2%

%lamp = 32.2%

Conical surface Flux(130deg): 1265.4 lm

%lum = 57.0%

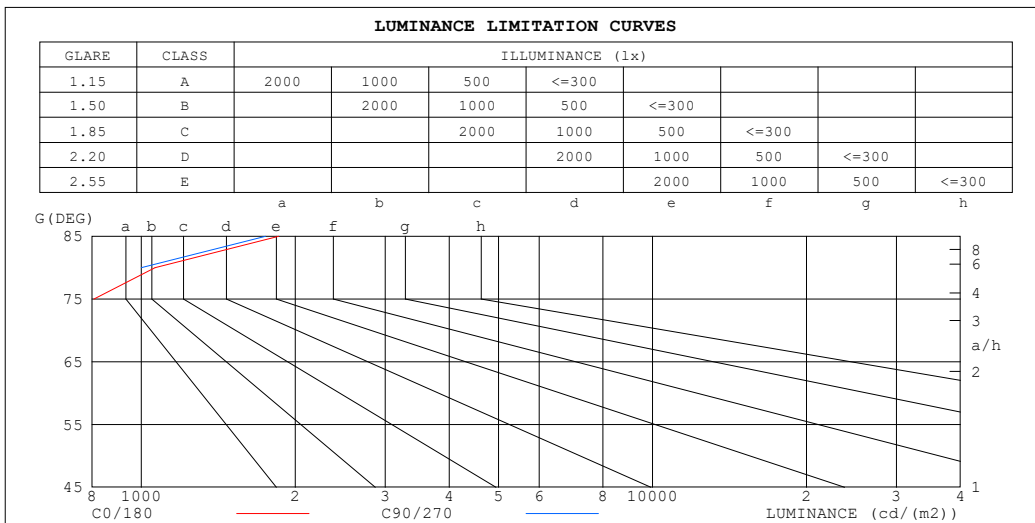
%lamp = 57.0%

C Range: 0 - 360DEG
 C Interval: 22.5DEG
 Test Speed: HIGH
 Temperature:25.3°C
 Operators:DAMIN
 Test Date:2023-11-09

γ Range: 0 - 180DEG
 γ Interval: 5.0DEG
 Test System:EVERFINE GO-2000B_V1 SYSTEM V2.00.473
 Humidity:65.0%
 Test Distance:9.401m [K=1.0000]
 Remarks:

LUMINANCE LIMITATION CURVES

Test:U:220.33V I:0.1696A P:19.144W PF:0.5122 Freq:50.00Hz Lamp Flux:2219.55x1 lm		
NAME: 球泡	TYPE:	WEIGHT:
SPEC.:	DIM.:	SERIAL No.:
MFR.: EVERFINE	SUR.: 1	Shielding Angle:



LUMINANCE cd/(m2)		
G (DEG)	C0/180	C90/270
85	1855	1749
80	1063	1000
75	808	759
70	690	648
65	623	585
60	581	546
55	551	519
50	528	497
45	510	481

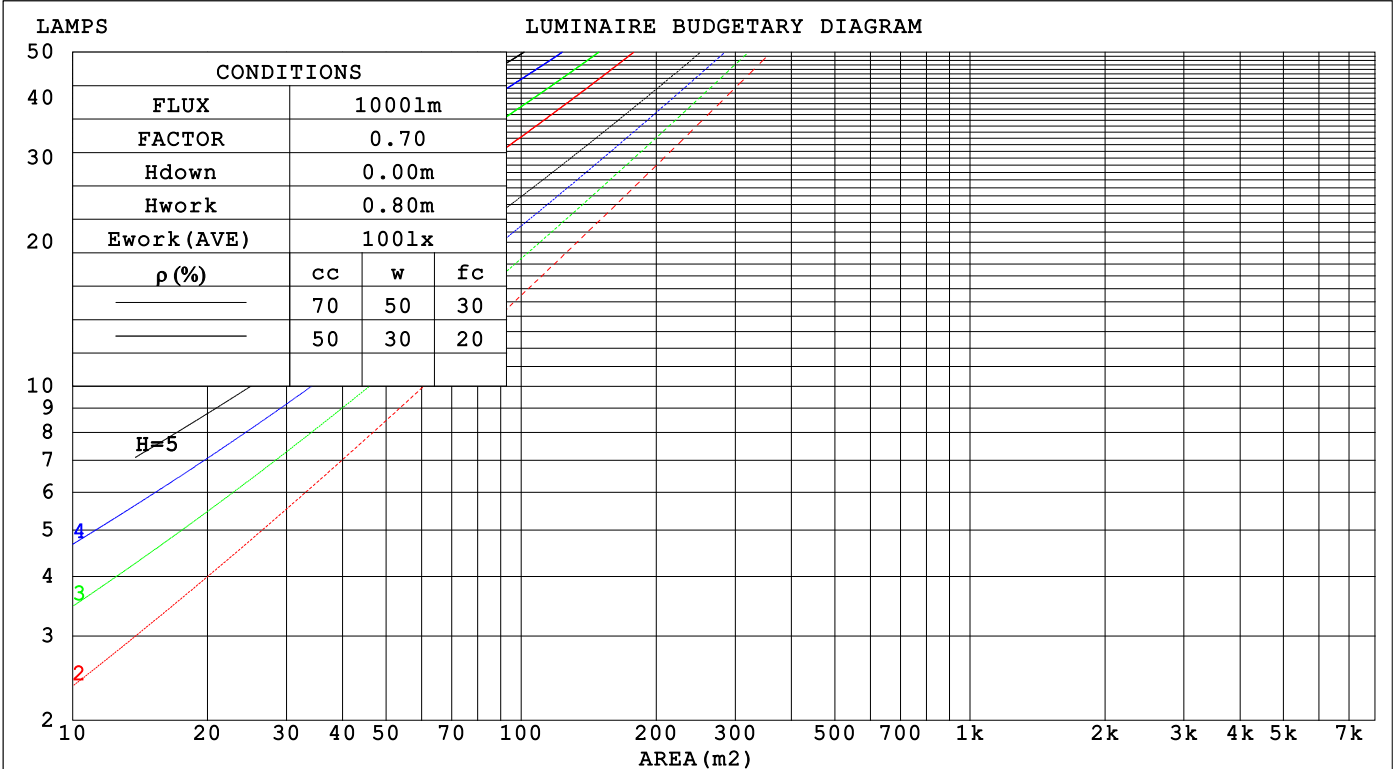
C Range: 0 - 360DEG
 C Interval: 22.5DEG
 Test Speed: HIGH
 Temperature:25.3°C
 Operators:DAMIN
 Test Date:2023-11-09

γ Range: 0 - 180DEG
 γ Interval: 5.0DEG
 Test System:EVERFINE GO-2000B_V1 SYSTEM V2.00.473
 Humidity:65.0%
 Test Distance:9.401m [K=1.0000]
 Remarks:

CU AND LUMINAIRE BUDGETARY ESTIMATE DIAGRAM

Test:U:220.33V I:0.1696A P:19.144W PF:0.5122 Freq:50.00Hz Lamp Flux:2219.55x1 lm		
NAME: 球泡	TYPE:	WEIGHT:
SPEC.:	DIM.:	SERIAL No.:
MFR.: EVERFINE	SUR.: 1	Shielding Angle:

pcc	80%			70%			50%			30%			10%			0
pw	50%	30%	10%	50%	30%	10%	50%	30%	10%	50%	30%	10%	50%	30%	10%	0
pfc	20%			20%			20%			20%			20%			0
RCR	RCR:Room Cavity Ratio						Coefficients of Utilization(CU)									
0.0	1.14	1.14	1.14	1.09	1.09	1.09	1.00	1.00	1.00	.92	.92	.92	.84	.84	.84	.81
1.0	.95	.89	.84	.91	.86	.81	.83	.79	.75	.75	.72	.69	.69	.66	.64	.60
2.0	.81	.73	.66	.77	.70	.64	.70	.64	.59	.64	.59	.55	.58	.54	.51	.47
3.0	.70	.61	.53	.67	.58	.52	.61	.54	.48	.55	.50	.45	.50	.46	.42	.38
4.0	.61	.52	.44	.58	.50	.43	.53	.46	.40	.49	.42	.37	.44	.39	.35	.32
5.0	.54	.44	.37	.52	.43	.36	.47	.40	.34	.43	.37	.32	.40	.34	.30	.27
6.0	.48	.39	.32	.46	.38	.31	.42	.35	.29	.39	.32	.28	.36	.30	.26	.23
7.0	.44	.34	.28	.42	.33	.27	.38	.31	.26	.35	.29	.24	.32	.27	.23	.20
8.0	.39	.31	.25	.38	.30	.24	.35	.28	.23	.32	.26	.21	.30	.24	.20	.18
9.0	.36	.28	.22	.35	.27	.21	.32	.25	.20	.30	.23	.19	.27	.22	.18	.16
10.0	.33	.25	.20	.32	.24	.19	.30	.23	.18	.27	.21	.17	.25	.20	.16	.14



C Range: 0 - 360DEG
 C Interval: 22.5DEG
 Test Speed: HIGH
 Temperature:25.3°C
 Operators:DAMIN
 Test Date:2023-11-09

γ Range: 0 - 180DEG
 γ Interval: 5.0DEG
 Test System:EVERFINE GO-2000B_V1 SYSTEM V2.00.473
 Humidity:65.0%
 Test Distance:9.401m [K=1.0000]
 Remarks:

WEC AND CCEC

Test:U:220.33V I:0.1696A P:19.144W PF:0.5122 Freq:50.00Hz								
Lamp Flux:2219.55x1 lm								
NAME: 球泡			TYPE:			WEIGHT:		
SPEC.:			DIM.:			SERIAL No.:		
MFR.: EVERFINE			SUR.: 1			Shielding Angle:		

ρ_{CC}	80%			70%			50%			30%			10%			0
ρ_w	50%	30%	10%	50%	30%	10%	50%	30%	10%	50%	30%	10%	50%	30%	10%	0
ρ_{fc}	20%			20%			20%			20%			20%			0
RCR	RCR:Room Cavity Ratio						Wall Exitance Coefficients(WEC)									
0.0																
1.0	.395	.224	.071	.381	.218	.069	.357	.205	.065	.334	.193	.062	.313	.181	.058	
2.0	.340	.186	.057	.328	.181	.056	.306	.170	.053	.285	.160	.050	.266	.150	.047	
3.0	.301	.160	.048	.290	.155	.047	.270	.146	.044	.251	.138	.042	.234	.129	.040	
4.0	.270	.140	.041	.261	.136	.040	.242	.128	.038	.225	.121	.036	.209	.114	.035	
5.0	.245	.125	.036	.236	.121	.035	.220	.114	.034	.204	.108	.032	.190	.101	.030	
6.0	.224	.113	.032	.216	.109	.031	.201	.103	.030	.187	.097	.029	.174	.091	.027	
7.0	.207	.102	.029	.199	.099	.028	.185	.094	.027	.172	.088	.026	.160	.083	.024	
8.0	.192	.094	.026	.185	.091	.026	.172	.086	.025	.160	.081	.023	.149	.076	.022	
9.0	.178	.086	.024	.172	.084	.024	.160	.079	.022	.149	.075	.021	.139	.070	.020	
10.0	.167	.080	.022	.161	.078	.022	.150	.074	.021	.140	.069	.020	.130	.065	.019	

ρ_{CC}	80%			70%			50%			30%			10%			0
ρ_w	50%	30%	10%	50%	30%	10%	50%	30%	10%	50%	30%	10%	50%	30%	10%	0
ρ_{fc}	20%			20%			20%			20%			20%			0
RCR	RCR:Room Cavity Ratio						Ceiling Cavity Exitance Coefficients(CCEC)									
0.0	.339	.339	.339	.290	.290	.290	.198	.198	.198	.114	.114	.114	.036	.036	.036	
1.0	.336	.305	.277	.287	.262	.239	.197	.180	.165	.113	.104	.096	.036	.034	.031	
2.0	.329	.282	.243	.282	.243	.210	.193	.168	.146	.111	.098	.086	.036	.032	.028	
3.0	.322	.266	.221	.276	.229	.192	.190	.159	.135	.109	.093	.079	.035	.030	.026	
4.0	.314	.254	.207	.270	.219	.180	.185	.153	.127	.107	.089	.075	.035	.029	.025	
5.0	.307	.244	.198	.263	.211	.172	.181	.147	.121	.105	.087	.072	.034	.028	.024	
6.0	.299	.236	.191	.257	.204	.166	.177	.143	.118	.103	.084	.070	.033	.028	.023	
7.0	.292	.229	.186	.251	.199	.162	.174	.139	.115	.101	.082	.068	.033	.027	.023	
8.0	.285	.224	.182	.246	.194	.159	.170	.136	.112	.099	.080	.067	.032	.026	.022	
9.0	.279	.219	.179	.240	.190	.156	.166	.134	.111	.097	.079	.066	.031	.026	.022	
10.0	.273	.215	.176	.235	.187	.154	.163	.131	.109	.095	.078	.065	.031	.026	.022	

C Range: 0 - 360DEG
 C Interval: 22.5DEG
 Test Speed: HIGH
 Temperature:25.3°C
 Operators:DAMIN
 Test Date:2023-11-09

γ Range: 0 - 180DEG
 γ Interval: 5.0DEG
 Test System:EVERFINE GO-2000B_V1 SYSTEM V2.00.473
 Humidity:65.0%
 Test Distance:9.401m [K=1.0000]
 Remarks:

UGR(Unified Glare Rating) Table

Test:U:220.33V I:0.1696A P:19.144W PF:0.5122 Freq:50.00Hz										
Lamp Flux:2219.55x1 lm										
NAME: 球泡			TYPE:				WEIGHT:			
SPEC.:			DIM.:				SERIAL No.:			
MFR.: EVERFINE			SUR.: 1				Shielding Angle:			
ceiling/cavity	0.7	0.7	0.5	0.5	0.3	0.7	0.7	0.5	0.5	0.3
walls	0.5	0.3	0.5	0.3	0.3	0.5	0.3	0.5	0.3	0.3
working plane	0.2	0.2	0.2	0.2	0.2	0.2	0.2	0.2	0.2	0.2
Room dimensions	Viewed crosswise					Viewed endwise				
x = 2H y = 2H	6.9	8.2	7.4	8.8	9.4	6.6	8.0	7.1	8.5	9.1
3H	9.2	10.5	9.7	11.0	11.7	8.9	10.2	9.4	10.7	11.4
4H	10.4	11.6	11.0	12.2	12.9	10.1	11.3	10.7	11.9	12.6
6H	11.8	12.9	12.4	13.5	14.2	11.5	12.6	12.0	13.2	13.9
8H	12.5	13.6	13.1	14.2	14.9	12.2	13.3	12.8	13.9	14.6
12H	13.4	14.5	14.0	15.1	15.8	13.0	14.1	13.7	14.7	15.4
4H 2H	7.6	8.8	8.1	9.3	10.0	7.4	8.6	8.0	9.2	9.8
3H	10.1	11.2	10.7	11.8	12.5	9.9	10.9	10.5	11.5	12.2
4H	11.5	12.5	12.2	13.1	13.9	11.2	12.2	11.9	12.9	13.6
6H	13.1	13.9	13.7	14.6	15.4	12.8	13.6	13.4	14.3	15.1
8H	13.9	14.7	14.6	15.4	16.2	13.6	14.4	14.3	15.1	15.9
12H	14.9	15.7	15.6	16.4	17.2	14.6	15.3	15.3	16.0	16.8
8H 4H	12.0	12.8	12.7	13.5	14.3	11.8	12.6	12.5	13.3	14.1
6H	13.8	14.5	14.5	15.2	16.1	13.6	14.3	14.3	15.0	15.8
8H	14.9	15.5	15.6	16.2	17.1	14.6	15.2	15.3	16.0	16.8
12H	16.1	16.6	16.8	17.4	18.3	15.8	16.4	16.6	17.1	18.0
12H 4H	12.1	12.9	12.8	13.6	14.4	11.9	12.7	12.6	13.4	14.2
6H	14.0	14.7	14.8	15.4	16.2	13.8	14.4	14.5	15.2	16.0
8H	15.2	15.7	15.9	16.5	17.4	15.0	15.5	15.7	16.3	17.1
Variations with the observer position at spacings(CIE Pub.117):										
S = 1.0H	+ 0.1 / - 0.1					+ 0.1 / - 0.1				
1.5H	+ 0.2 / - 0.3					+ 0.2 / - 0.3				
2.0H	+ 0.2 / - 0.3					+ 0.2 / - 0.4				

CIE Pub.117, 2220 lm Total Lamp Luminous Flux Correct (8log(F/F0) = 2.8)
 Area: 1 m2

C Range: 0 - 360DEG
 C Interval: 22.5DEG
 Test Speed: HIGH
 Temperature:25.3°C
 Operators:DAMIN
 Test Date:2023-11-09

γ Range: 0 - 180DEG
 γ Interval: 5.0DEG
 Test System:EVERFINE GO-2000B_V1 SYSTEM V2.00.473
 Humidity:65.0%
 Test Distance:9.401m [K=1.0000]
 Remarks:

UTILIZATION FACTORS TABLE

Test:U:220.33V I:0.1696A P:19.144W PF:0.5122 Freq:50.00Hz Lamp Flux:2219.55x1 lm		
NAME: 球泡	TYPE:	WEIGHT:
SPEC.:	DIM.:	SERIAL No.:
MFR.: EVERFINE	SUR.: 1	Shielding Angle:

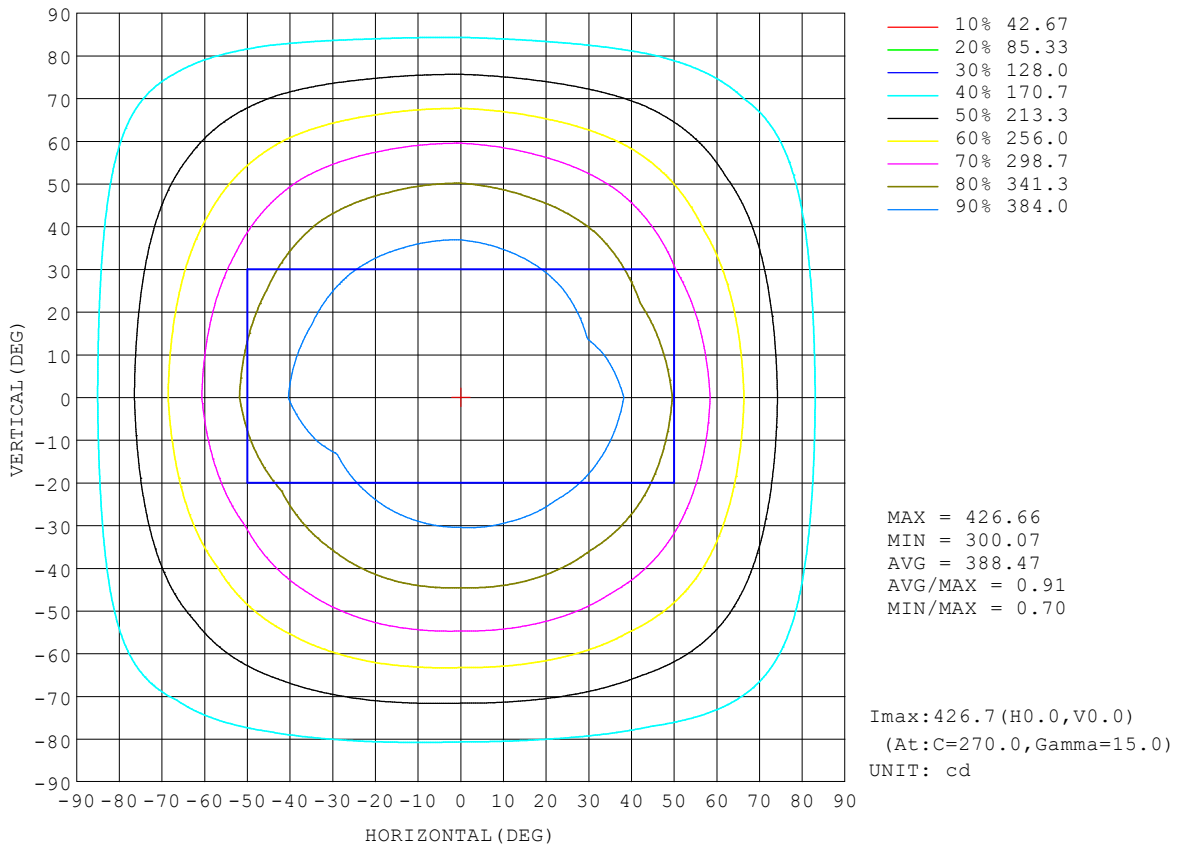
REFLECTANCE										
Ceiling	0.8	0.8	0.8	0.7	0.7	0.7	0.5	0.5	0.5	0
Walls	0.7	0.5	0.3	0.7	0.5	0.3	0.7	0.5	0.3	0
Working plane	0.2	0.2	0.2	0.2	0.2	0.2	0.2	0.2	0.2	0
ROOM INDEX	UTILIZATION FACTORS (PERCENT) $k(RI) \times RCR = 5$									
k = 0.60	46	34	26	45	33	26	43	32	26	19
0.80	55	42	34	54	41	34	51	40	33	25
1.00	63	50	41	61	49	41	57	49	40	31
1.25	70	57	48	68	56	48	63	53	46	36
1.50	75	63	54	73	61	53	67	58	51	40
2.00	83	71	63	80	69	61	74	65	58	46
2.50	87	77	69	84	74	67	77	70	63	50
3.00	91	82	74	87	79	72	80	73	68	54
4.00	96	88	81	92	85	78	84	79	73	59
5.00	99	92	86	95	88	83	87	82	77	62
ROOM INDEX	UF(total)									Direct
According to DIN EN 13032-2 2004			Suspended				SHRNOM = 1.25			

C Range: 0 - 360DEG
 C Interval: 22.5DEG
 Test Speed: HIGH
 Temperature:25.3°C
 Operators:DAMIN
 Test Date:2023-11-09

γ Range: 0 - 180DEG
 γ Interval: 5.0DEG
 Test System:EVERFINE GO-2000B_V1 SYSTEM V2.00.473
 Humidity:65.0%
 Test Distance:9.401m [K=1.0000]
 Remarks:

ISOCANDELA DIAGRAM

Test:U:220.33V I:0.1696A P:19.144W PF:0.5122 Freq:50.00Hz Lamp Flux:2219.55x1 lm		
NAME: 球泡	TYPE:	WEIGHT:
SPEC.:	DIM.:	SERIAL No.:
MFR.: EVERFINE	SUR.: 1	Shielding Angle:

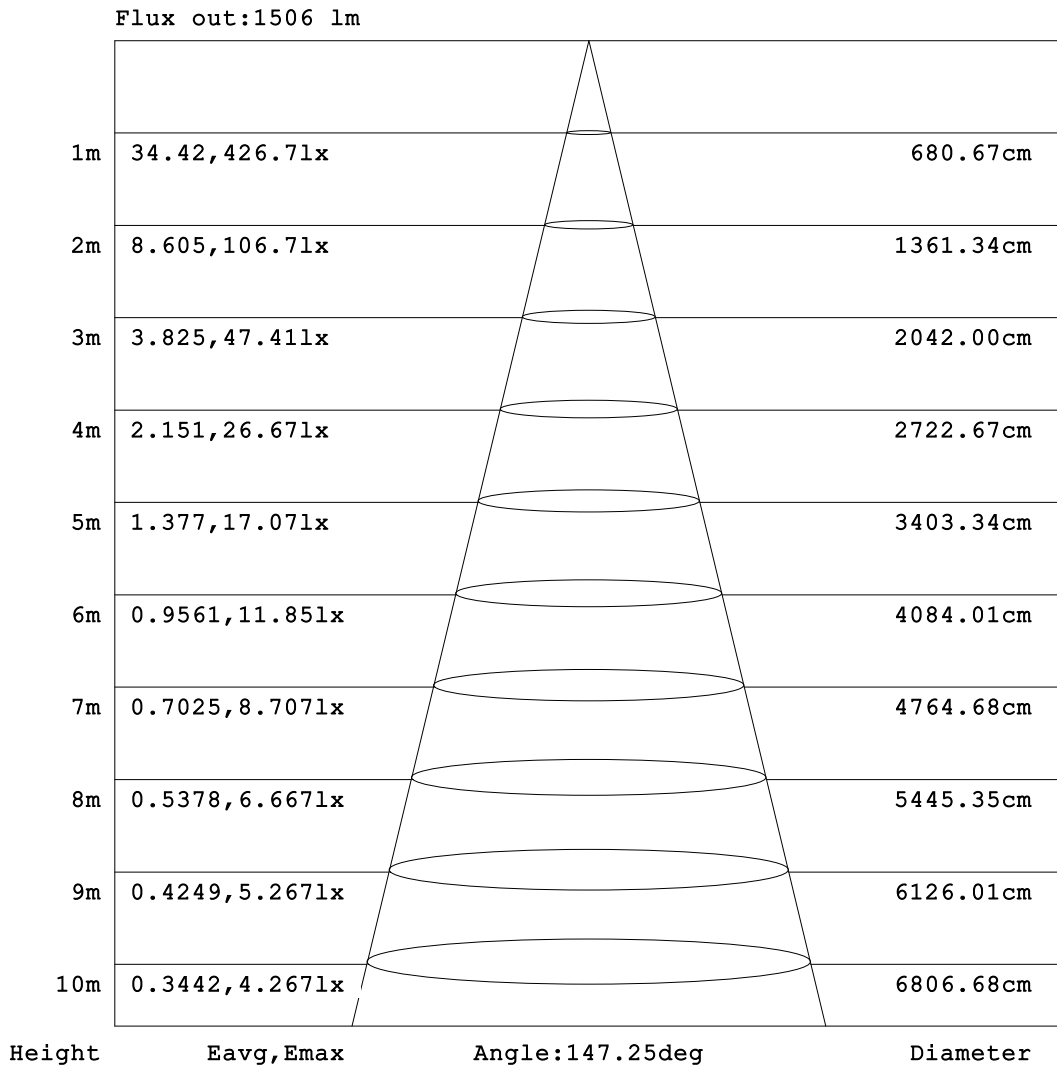


C Range: 0 - 360DEG
 C Interval: 22.5DEG
 Test Speed: HIGH
 Temperature:25.3°C
 Operators:DAMIN
 Test Date:2023-11-09

γ Range: 0 - 180DEG
 γ Interval: 5.0DEG
 Test System:EVERFINE GO-2000B_V1 SYSTEM V2.00.473
 Humidity:65.0%
 Test Distance:9.401m [K=1.0000]
 Remarks:

AAI Figure

Test:U:220.33V I:0.1696A P:19.144W PF:0.5122 Freq:50.00Hz Lamp Flux:2219.55x1 lm		
NAME: 球泡	TYPE:	WEIGHT:
SPEC.:	DIM.:	SERIAL No.:
MFR.: EVERFINE	SUR.: 1	Shielding Angle:



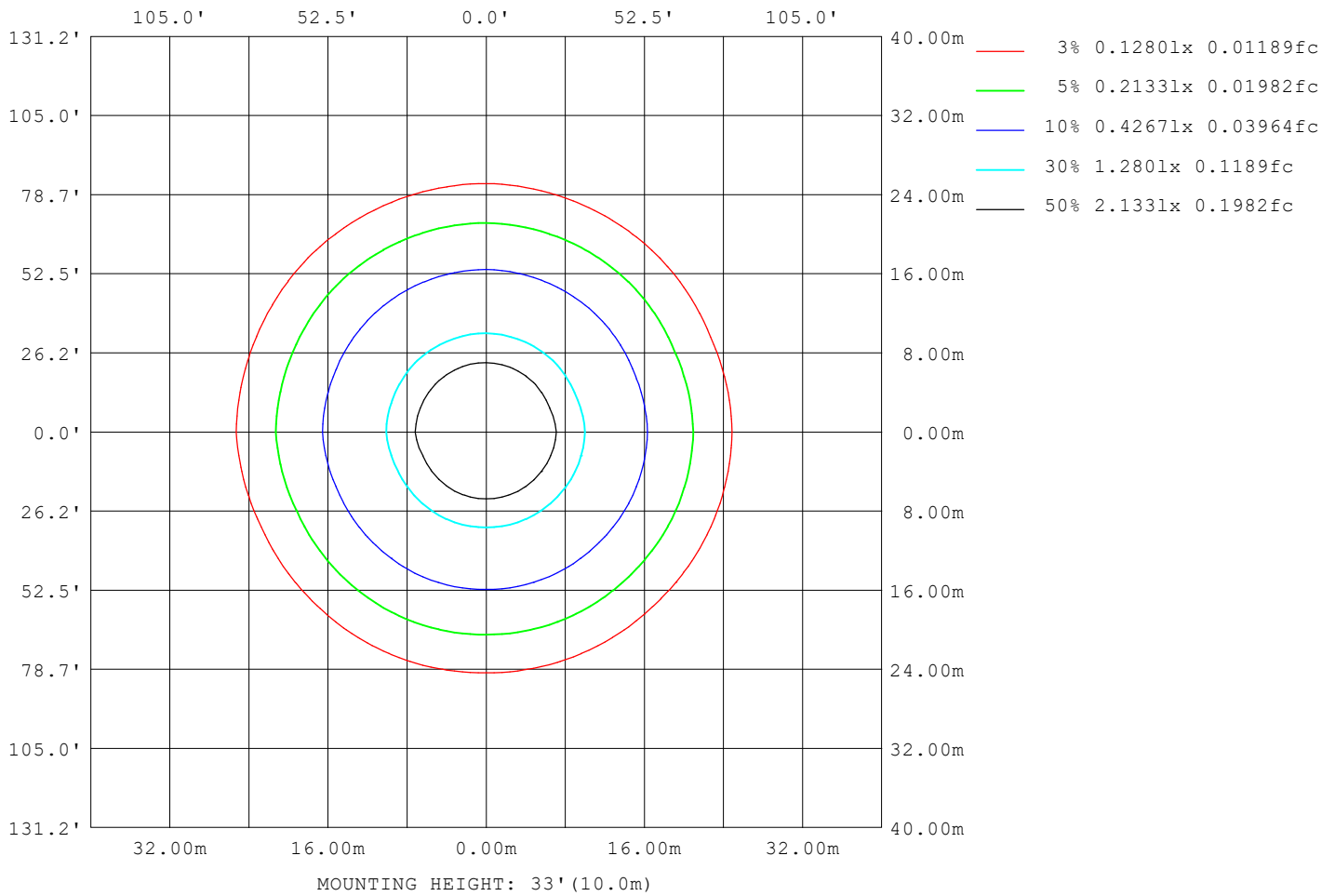
Note: The Curves indicate the illuminated area and the average illumination when the luminaire is at different distance.

C Range: 0 - 360DEG
 C Interval: 22.5DEG
 Test Speed: HIGH
 Temperature: 25.3°C
 Operators: DAMIN
 Test Date: 2023-11-09

γ Range: 0 - 180DEG
 γ Interval: 5.0DEG
 Test System: EVERFINE GO-2000B_V1 SYSTEM V2.00.473
 Humidity: 65.0%
 Test Distance: 9.401m [K=1.0000]
 Remarks:

ISOLUX DIAGRAM

Test:U:220.33V I:0.1696A P:19.144W PF:0.5122 Freq:50.00Hz Lamp Flux:2219.55x1 lm		
NAME: 球泡	TYPE:	WEIGHT:
SPEC.:	DIM.:	SERIAL No.:
MFR.: EVERFINE	SUR.: 1	Shielding Angle:



C Range: 0 - 360DEG
 C Interval: 22.5DEG
 Test Speed: HIGH
 Temperature:25.3°C
 Operators:DAMIN
 Test Date:2023-11-09

γ Range: 0 - 180DEG
 γ Interval: 5.0DEG
 Test System:EVERFINE GO-2000B_V1 SYSTEM V2.00.473
 Humidity:65.0%
 Test Distance:9.401m [K=1.0000]
 Remarks:

LED Avg.L Report

Test:U:220.33V I:0.1696A P:19.144W PF:0.5122 Freq:50.00Hz Lamp Flux:2219.55x1 lm		
NAME: 球泡	TYPE:	WEIGHT:
SPEC.:	DIM.:	SERIAL No.:
MFR.: EVERFINE	SUR.: 1	Shielding Angle:

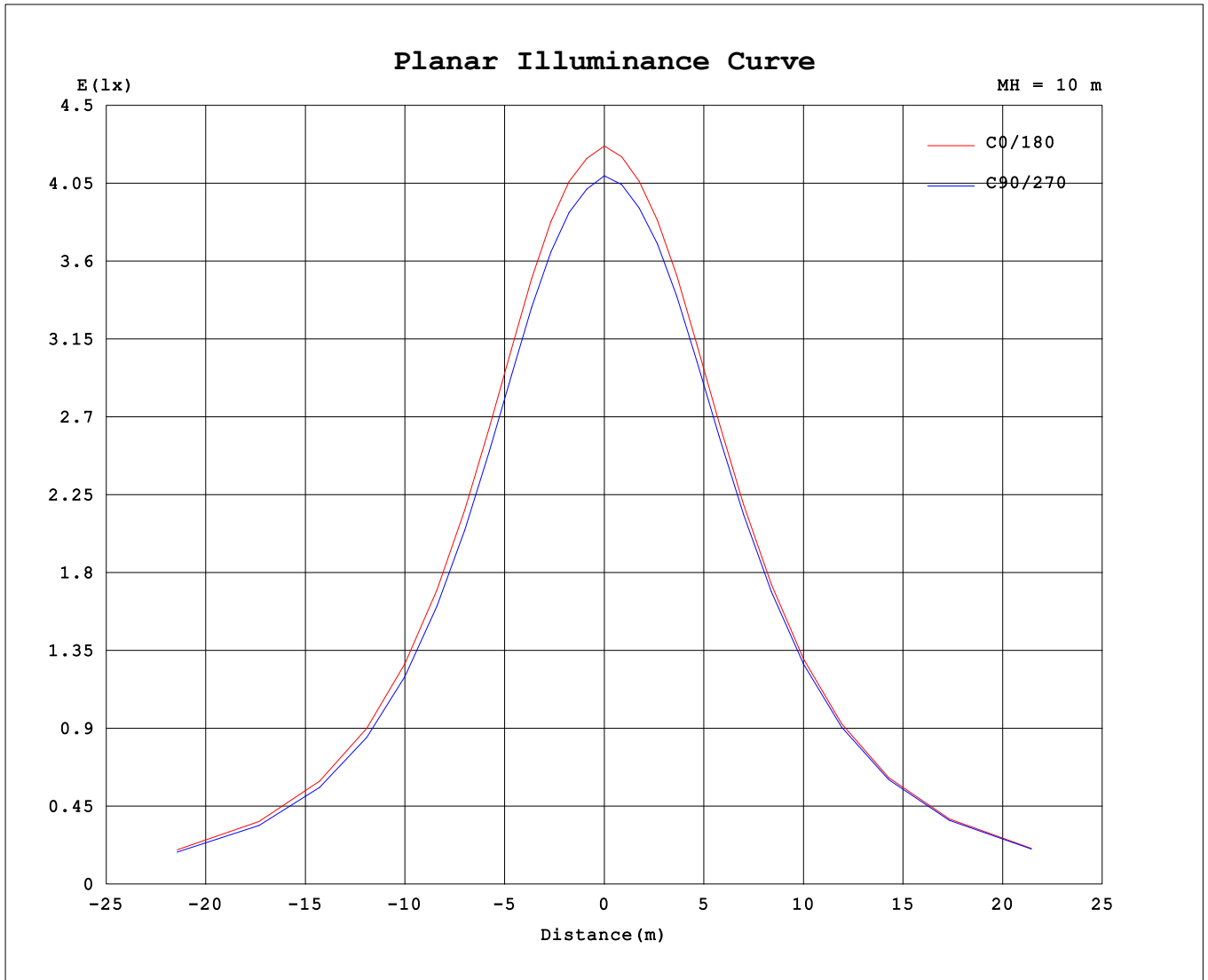
AvgL	cd/m2
L_0~180 (65) av	617
L_0~180 (75) av	803
L_0~180 (85) av	1845
L_90~270 (65) av	617
L_90~270 (75) av	804
L_90~270 (85) av	1849
L_45 (65) av	616
L_45 (75) av	803
L_45 (85) av	1845

Standard: GB/T 29293-2012

C Range: 0 - 360DEG
 C Interval: 22.5DEG
 Test Speed: HIGH
 Temperature:25.3℃
 Operators:DAMIN
 Test Date:2023-11-09

γ Range: 0 - 180DEG
 γ Interval: 5.0DEG
 Test System:EVERFINE GO-2000B_V1 SYSTEM V2.00.473
 Humidity:65.0%
 Test Distance:9.401m [K=1.0000]
 Remarks:

Planar Illuminance Curve



C Range: 0 - 360DEG
 C Interval: 22.5DEG
 Test Speed: HIGH
 Temperature: 25.3°C
 Operators: DAMIN
 Test Date: 2023-11-09

γ Range: 0 - 180DEG
 γ Interval: 5.0DEG
 Test System: EVERFINE GO-2000B_V1 SYSTEM V2.00.473
 Humidity: 65.0%
 Test Distance: 9.401m [K=1.0000]
 Remarks:

LUMINOUS DISTRIBUTION INTENSITY DATA

Test:U:220.33V I:0.1696A P:19.144W PF:0.5122 Freq:50.00Hz Lamp Flux:2219.55x1 lm		
NAME: 球泡	TYPE:	WEIGHT:
SPEC.:	DIM.:	SERIAL No.:
MFR.: EVERFINE	SUR.: 1	Shielding Angle:

Table--1

UNIT: cd

C (DEG) \ γ (DEG)	0	22.5	45	67.5	90	112.5	135	157.5	180	202.5	225	247.5	270	292.5	315	337.5			
0	413	413	413	413	413	413	413	413	413	413	413	413	413	413	413	413			
5	410	410	410	409	409	409	410	410	411	411	412	412	412	412	411	411			
10	411	411	410	410	410	410	410	410	411	411	412	412	412	412	412	412			
15	411	410	409	409	409	409	409	410	411	412	413	413	414	413	413	412			
20	408	407	406	405	405	405	406	407	410	410	412	412	413	412	411	409			
25	402	401	399	399	398	399	400	402	405	406	408	409	409	408	406	404			
30	393	391	389	389	388	389	391	393	397	398	401	402	402	400	398	395			
35	381	379	377	376	376	377	379	382	386	388	391	392	392	390	387	384			
40	366	365	361	361	361	363	364	368	373	375	378	378	379	376	373	370			
45	349	348	343	344	343	346	347	352	356	358	363	362	363	360	358	352			
50	328	328	323	323	322	326	327	332	338	339	344	344	345	340	338	333			
55	306	304	300	300	300	303	305	311	316	318	323	322	323	319	316	310			
60	281	280	275	276	275	279	281	287	292	294	298	298	299	294	292	286			
65	255	253	249	250	249	253	255	261	266	268	272	272	273	268	265	260			
70	228	227	223	223	223	227	229	235	240	241	245	245	245	241	239	233			
75	202	201	197	198	198	202	204	209	214	214	218	218	218	215	212	207			
80	179	177	174	175	175	178	180	185	188	189	192	192	193	190	187	183			
85	156	155	152	153	154	156	158	162	165	166	168	168	169	166	164	160			
90	137	136	134	134	135	137	139	142	145	145	147	147	147	145	143	140			
95	120	119	117	118	118	120	122	124	127	127	128	128	129	127	125	122			
100	105	105	104	104	105	106	108	110	111	111	113	112	113	111	110	108			
105	93.5	93.3	91.9	92.4	92.7	94.4	95.3	97.1	98.6	98.3	99.4	99.2	99.4	98.3	97.3	95.3			
110	83.2	83.0	81.8	82.3	82.6	84.0	84.8	86.3	87.6	87.3	88.3	88.0	88.2	87.3	86.4	84.8			
115	73.8	73.7	72.6	73.1	73.4	74.7	75.4	76.7	77.9	77.6	78.4	78.1	78.4	77.5	76.7	75.3			
120	65.2	65.1	64.1	64.5	64.9	66.0	66.7	67.9	69.0	68.7	69.5	69.2	69.3	68.5	67.8	66.5			
125	57.1	57.1	56.2	56.6	57.0	58.0	58.6	59.7	60.6	60.4	61.1	60.9	60.9	60.2	59.5	58.3			
130	49.7	49.6	48.8	49.2	49.5	50.4	51.1	52.0	52.9	52.7	53.3	53.1	53.1	52.4	51.8	50.7			
135	42.6	42.5	41.9	42.1	42.4	43.3	43.9	44.8	45.6	45.4	46.0	45.8	45.8	45.2	44.6	43.6			
140	36.0	35.9	35.3	35.5	35.8	36.6	37.2	38.0	38.8	38.7	39.1	39.0	38.9	38.3	37.7	36.9			
145	29.7	29.6	29.0	29.3	29.5	30.3	30.8	31.6	32.3	32.2	32.7	32.5	32.5	31.9	31.3	30.4			
150	23.8	23.6	23.0	23.4	23.5	24.3	24.8	25.6	26.2	26.2	26.6	26.4	26.4	25.7	25.2	24.4			
155	18.2	18.1	17.5	17.8	18.0	18.7	19.1	19.9	20.5	20.4	20.9	20.6	20.6	20.0	19.5	18.8			
160	13.1	13.0	12.6	12.8	13.0	13.6	14.0	14.7	15.2	15.2	15.5	15.3	15.2	14.7	14.3	13.6			
165	8.88	8.73	8.45	8.58	8.79	9.26	9.61	10.2	10.6	10.6	10.9	10.7	10.6	10.1	9.77	9.22			
170	5.87	5.79	5.72	5.77	5.98	6.22	6.46	6.75	7.06	7.10	7.19	7.08	6.96	6.70	6.39	6.07			
175	4.86	4.95	5.04	5.06	5.15	5.15	5.24	5.13	5.23	5.21	5.15	5.12	4.99	4.91	4.79	4.85			
180	4.73	4.82	4.76	4.79	4.75	4.76	4.75	4.77	4.84	4.75	4.80	4.77	4.78	4.76	4.77	4.75			

C Range: 0 - 360DEG
 C Interval: 22.5DEG
 Test Speed: HIGH
 Temperature:25.3℃
 Operators:DAMIN
 Test Date:2023-11-09

γ Range: 0 - 180DEG
 γ Interval: 5.0DEG
 Test System:EVERFINE GO-2000B_V1 SYSTEM V2.00.473
 Humidity:65.0%
 Test Distance:9.401m [K=1.0000]
 Remarks: