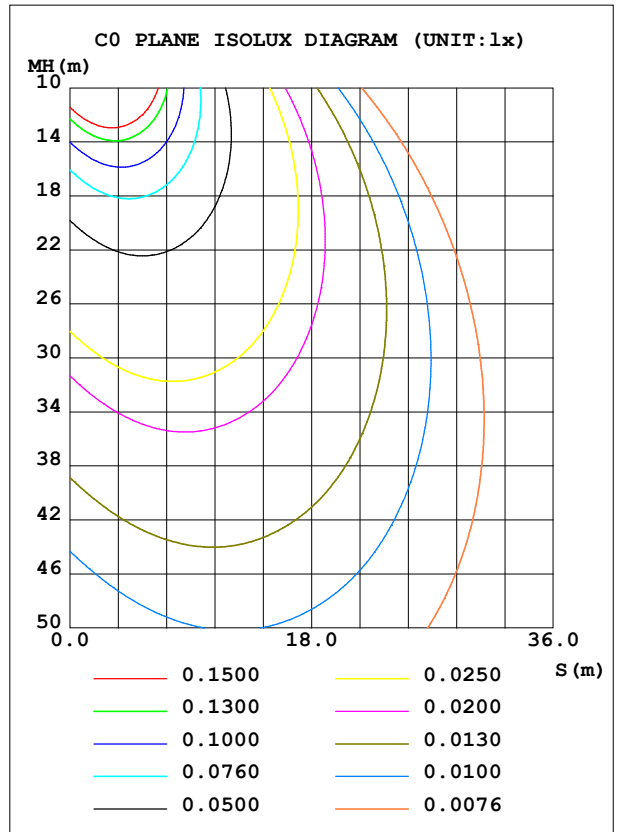
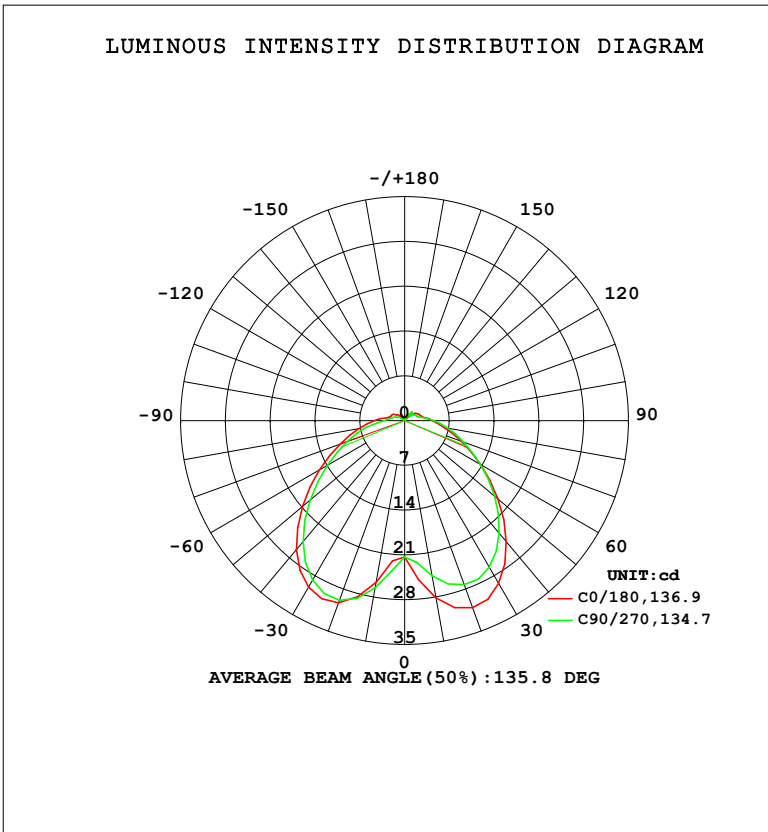


LUMINAIRE PHOTOMETRIC TEST REPORT

Test:U:220.36V I:0.0727A P:5.3616W PF:0.3345 Freq:50.00Hz Lamp Flux:103.42x1 lm		
NAME:	TYPE:	WEIGHT:
SPEC.:	DIM.:	SERIAL No.:
MFR.: EVERFINE	SUR.:	Shielding Angle:

DATA OF LAMP		PHOTOMETRIC DATA				Eff: 19.29 lm/W
MODEL	HYUNDAI 本厂	I _{max} (cd)	31.44	S/MH (C0/180)	1.72	
NOMINAL POWER (W)		LOR (%)	100.0	S/MH (C90/270)	1.66	
RATED VOLTAGE (V)	220	TOTAL FLUX (lm)	103.42	η UP, DN (C0-180)	4.8, 45.1	
NOMINAL FLUX (lm)	103.42	CIE CLASS	DIRECT	η UP, DN (C180-360)	3.7, 46.4	
LAMPS INSIDE	1	η up (%)	8.5	CIBSE SHR NOM	1.50	
TEST VOLTAGE (V)	219.5	η down (%)	91.5	CIBSE SHR MAX	1.50	



C Range: 0 - 360DEG
 C Interval: 22.5DEG
 Test Speed: HIGH
 Temperature: 25.3°C
 Operators: DAMIN
 Test Date: 2024-04-26

γ Range: 0 - 180DEG
 γ Interval: 5.0DEG
 Test System: EVERFINE GO-2000B_V1 SYSTEM V2.00.473
 Humidity: 65.0%
 Test Distance: 9.401m [K=1.0000]
 Remarks:

ZONAL FLUX DIAGRAM

ZONAL FLUX DIAGRAM:

γ	C0	C45	C90	C135	C180	C225	C270	C315	γ	Φ zone	Φ total	%lum,lamp
10	28.12	25.79	24.57	22.99	25.62	27.50	26.52	24.41	0- 10	2.253	2.253	2.18,2.18
20	31.12	29.32	27.28	25.41	30.30	31.20	29.88	26.05	10- 20	7.698	9.951	9.62,9.62
30	29.39	28.75	26.46	24.63	30.08	30.08	28.79	24.69	20- 30	12.94	22.89	22.1,22.1
40	24.73	25.11	23.01	21.27	26.32	25.77	24.73	21.13	30- 40	15.98	38.87	37.6,37.6
50	19.04	19.94	18.35	16.82	20.87	20.05	19.31	16.57	40- 50	16.23	55.10	53.3,53.3
60	13.70	14.72	13.68	12.43	15.36	14.47	13.96	12.17	50- 60	14.27	69.37	67.1,67.1
70	9.437	10.35	9.804	8.800	10.72	9.986	9.554	8.564	60- 70	11.30	80.67	78,78
80	6.342	7.120	6.858	6.131	7.291	6.722	6.174	5.886	70- 80	8.309	88.98	86,86
90	4.358	4.703	4.643	4.091	4.767	4.372	3.245	3.891	80- 90	5.609	94.59	91.5,91.5
100	3.096	2.424	2.880	2.008	2.831	1.847	2.238	1.945	90-100	3.490	98.08	94.8,94.8
110	2.584	1.666	2.112	1.460	2.283	1.161	1.641	1.317	100-110	2.117	100.2	96.9,96.9
120	2.244	0.8827	1.817	0.5708	2.001	0.2351	1.152	0.5520	110-120	1.458	101.7	98.3,98.3
130	1.493	0.4193	1.026	0.6670	1.490	0.1894	0.1147	0.1911	120-130	0.7555	102.4	99,99
140	0.5204	0.2677	1.829	0.8700	0.8681	0.1894	0.1328	0.1421	130-140	0.4885	102.9	99.5,99.5
150	1.118	0.1828	0.4840	0.1751	1.235	0.1960	0.1570	0.1476	140-150	0.2904	103.2	99.8,99.8
160	0.3009	0.3262	0.2896	0.2405	0.2943	0.2089	0.1690	0.1531	150-160	0.1524	103.3	99.9,99.9
170	0.2618	0.2484	0.2174	0.2024	0.2159	0.2155	0.1690	0.1531	160-170	0.0645	103.4	100,100
180	0.2224	0.2220	0.1991	0.1804	0.2224	0.2155	0.1690	0.1531	170-180	0.0184	103.4	100,100
DEG	LUMINOUS INTENSITY:cd									UNIT:lm		

Conical surface Flux(90deg): 47.117 lm

%lum = 45.6%

%lamp = 45.6%

Conical surface Flux(130deg): 75.412 lm

%lum = 72.9%

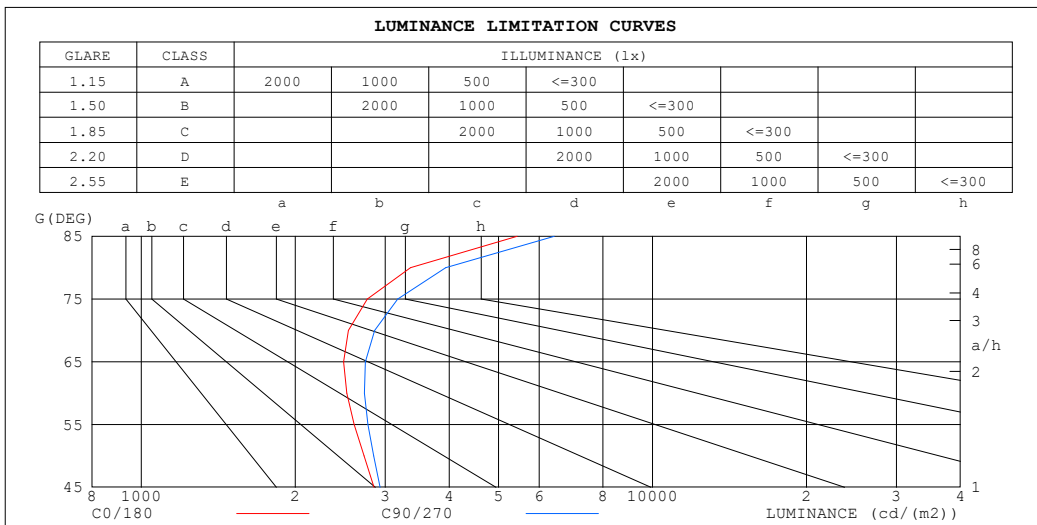
%lamp = 72.9%

C Range: 0 - 360DEG
 C Interval: 22.5DEG
 Test Speed: HIGH
 Temperature:25.3°C
 Operators:DAMIN
 Test Date:2024-04-26

γ Range: 0 - 180DEG
 γ Interval: 5.0DEG
 Test System:EVERFINE GO-2000B_V1 SYSTEM V2.00.473
 Humidity:65.0%
 Test Distance:9.401m [K=1.0000]
 Remarks:

LUMINANCE LIMITATION CURVES

Test:U:220.36V I:0.0727A P:5.3616W PF:0.3345 Freq:50.00Hz Lamp Flux:103.42x1 lm		
NAME:	TYPE:	WEIGHT:
SPEC.:	DIM.:	SERIAL No.:
MFR.: EVERFINE	SUR.:	Shielding Angle:



LUMINANCE cd/(m2)		
G (DEG)	C0/180	C90/270
85	5433	6422
80	3362	3941
75	2768	3175
70	2540	2860
65	2486	2742
60	2522	2730
55	2609	2775
50	2727	2849
45	2854	2931

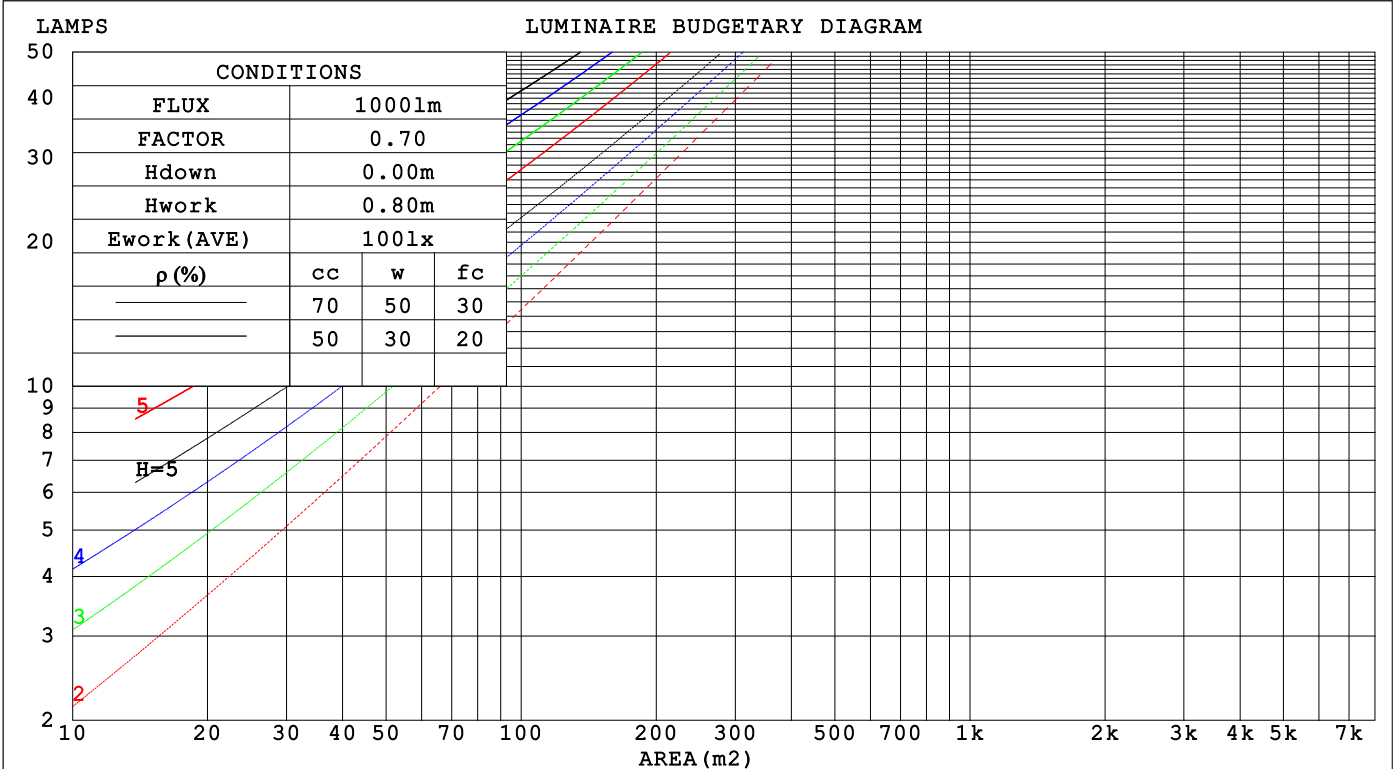
C Range: 0 - 360DEG
 C Interval: 22.5DEG
 Test Speed: HIGH
 Temperature:25.3°C
 Operators:DAMIN
 Test Date:2024-04-26

γ Range: 0 - 180DEG
 γ Interval: 5.0DEG
 Test System:EVERFINE GO-2000B_V1 SYSTEM V2.00.473
 Humidity:65.0%
 Test Distance:9.401m [K=1.0000]
 Remarks:

CU AND LUMINAIRE BUDGETARY ESTIMATE DIAGRAM

Test:U:220.36V I:0.0727A P:5.3616W PF:0.3345 Freq:50.00Hz Lamp Flux:103.42x1 lm		
NAME:	TYPE:	WEIGHT:
SPEC.:	DIM.:	SERIAL No.:
MFR.: EVERFINE	SUR.:	Shielding Angle:

ρcc	80%			70%			50%			30%			10%			0
ρw	50%	30%	10%	50%	30%	10%	50%	30%	10%	50%	30%	10%	50%	30%	10%	0
ρfc	20%			20%			20%			20%			20%			0
RCR	RCR:Room Cavity Ratio Coefficients of Utilization(CU)															
0.0	1.17	1.17	1.17	1.13	1.13	1.13	1.06	1.06	1.06	1.00	1.00	1.00	.94	.94	.94	.91
1.0	.00	.95	.90	.96	.92	.88	.91	.87	.84	.85	.82	.80	.80	.78	.76	.73
2.0	.86	.79	.72	.83	.77	.71	.78	.73	.68	.74	.69	.65	.70	.66	.62	.60
3.0	.75	.67	.60	.73	.65	.59	.69	.62	.56	.65	.59	.54	.61	.56	.52	.50
4.0	.66	.57	.50	.64	.56	.49	.61	.54	.48	.57	.51	.46	.54	.49	.45	.42
5.0	.59	.50	.43	.57	.49	.42	.54	.47	.41	.51	.45	.40	.49	.43	.39	.36
6.0	.53	.44	.37	.52	.43	.37	.49	.41	.36	.46	.40	.35	.44	.38	.34	.31
7.0	.48	.39	.33	.47	.38	.32	.44	.37	.31	.42	.36	.31	.40	.34	.30	.28
8.0	.44	.35	.29	.43	.34	.29	.40	.33	.28	.39	.32	.27	.37	.31	.27	.25
9.0	.40	.32	.26	.39	.31	.26	.37	.30	.25	.35	.29	.24	.34	.28	.24	.22
10.0	.37	.29	.23	.36	.28	.23	.34	.27	.23	.33	.27	.22	.31	.26	.22	.20



C Range: 0 - 360DEG
 C Interval: 22.5DEG
 Test Speed: HIGH
 Temperature:25.3°C
 Operators:DAMIN
 Test Date:2024-04-26

γ Range: 0 - 180DEG
 γ Interval: 5.0DEG
 Test System:EVERFINE GO-2000B_V1 SYSTEM V2.00.473
 Humidity:65.0%
 Test Distance:9.401m [K=1.0000]
 Remarks:

WEC AND CCEC

Test:U:220.36V I:0.0727A P:5.3616W PF:0.3345 Freq:50.00Hz								
Lamp Flux:103.42x1 lm								
NAME:			TYPE:			WEIGHT:		
SPEC.:			DIM.:			SERIAL No.:		
MFR.: EVERFINE			SUR.:			Shielding Angle:		

ρ_{CC}	80%			70%			50%			30%			10%			0
ρ_w	50%	30%	10%	50%	30%	10%	50%	30%	10%	50%	30%	10%	50%	30%	10%	0
ρ_{fc}	20%			20%			20%			20%			20%			0
RCR	RCR:Room Cavity Ratio						Wall Exitance Coefficients (WEC)									
0.0																
1.0	.352	.200	.063	.342	.195	.062	.324	.186	.059	.307	.177	.057	.292	.169	.055	
2.0	.314	.172	.053	.305	.168	.052	.289	.160	.050	.273	.153	.048	.259	.147	.046	
3.0	.283	.151	.045	.275	.148	.044	.261	.141	.043	.247	.135	.042	.235	.130	.040	
4.0	.258	.134	.039	.251	.131	.039	.238	.126	.038	.225	.121	.037	.214	.116	.035	
5.0	.236	.120	.035	.230	.118	.034	.218	.114	.033	.207	.109	.033	.197	.105	.032	
6.0	.218	.109	.031	.212	.107	.031	.201	.103	.030	.191	.099	.029	.182	.096	.028	
7.0	.202	.100	.028	.197	.098	.028	.187	.095	.027	.178	.091	.027	.169	.088	.026	
8.0	.188	.092	.026	.183	.090	.026	.175	.087	.025	.166	.084	.024	.158	.081	.024	
9.0	.176	.085	.024	.172	.084	.023	.164	.081	.023	.156	.078	.022	.149	.076	.022	
10.0	.165	.079	.022	.161	.078	.022	.154	.075	.021	.147	.073	.021	.140	.070	.020	

ρ_{CC}	80%			70%			50%			30%			10%			0
ρ_w	50%	30%	10%	50%	30%	10%	50%	30%	10%	50%	30%	10%	50%	30%	10%	0
ρ_{fc}	20%			20%			20%			20%			20%			0
RCR	RCR:Room Cavity Ratio						Ceiling Cavity Exitance Coefficients (CCEC)									
0.0	.256	.256	.256	.218	.218	.218	.149	.149	.149	.086	.086	.086	.027	.027	.027	
1.0	.249	.221	.197	.213	.190	.169	.146	.131	.117	.084	.076	.068	.027	.024	.022	
2.0	.241	.198	.161	.207	.170	.140	.142	.118	.097	.082	.069	.057	.026	.022	.019	
3.0	.233	.181	.139	.200	.156	.120	.137	.108	.084	.079	.063	.050	.026	.021	.016	
4.0	.226	.168	.124	.194	.145	.107	.133	.101	.076	.077	.059	.045	.025	.019	.015	
5.0	.218	.158	.113	.187	.137	.098	.129	.095	.070	.075	.056	.041	.024	.018	.014	
6.0	.211	.150	.106	.181	.130	.092	.125	.091	.065	.073	.053	.039	.023	.017	.013	
7.0	.204	.143	.100	.175	.124	.087	.121	.087	.062	.070	.051	.037	.023	.017	.012	
8.0	.197	.137	.096	.170	.119	.084	.118	.084	.059	.068	.049	.035	.022	.016	.012	
9.0	.191	.132	.093	.165	.115	.081	.114	.081	.057	.066	.048	.034	.022	.016	.011	
10.0	.186	.128	.090	.160	.111	.078	.111	.078	.056	.065	.046	.033	.021	.015	.011	

C Range: 0 - 360DEG
 C Interval: 22.5DEG
 Test Speed: HIGH
 Temperature:25.3°C
 Operators:DAMIN
 Test Date:2024-04-26

γ Range: 0 - 180DEG
 γ Interval: 5.0DEG
 Test System:EVERFINE GO-2000B_V1 SYSTEM V2.00.473
 Humidity:65.0%
 Test Distance:9.401m [K=1.0000]
 Remarks:

UGR(Unified Glare Rating) Table

Test:U:220.36V I:0.0727A P:5.3616W PF:0.3345 Freq:50.00Hz										
Lamp Flux:103.42x1 lm										
NAME:			TYPE:				WEIGHT:			
SPEC.:			DIM.:				SERIAL No.:			
MFR.: EVERFINE			SUR.:				Shielding Angle:			
ceiling/cavity	0.7	0.7	0.5	0.5	0.3	0.7	0.7	0.5	0.5	0.3
walls	0.5	0.3	0.5	0.3	0.3	0.5	0.3	0.5	0.3	0.3
working plane	0.2	0.2	0.2	0.2	0.2	0.2	0.2	0.2	0.2	0.2
Room dimensions	Viewed crosswise					Viewed endwise				
x = 2H y = 2H	23.3	24.7	23.7	25.1	25.5	23.5	25.0	23.9	25.3	25.7
3H	24.9	26.2	25.3	26.6	27.0	25.3	26.6	25.7	27.0	27.4
4H	25.7	27.0	26.2	27.4	27.9	26.2	27.5	26.7	27.9	28.4
6H	26.6	27.8	27.1	28.3	28.7	27.3	28.5	27.7	28.9	29.4
8H	27.1	28.3	27.6	28.7	29.2	27.8	29.0	28.3	29.4	29.9
12H	27.7	28.8	28.2	29.3	29.8	28.5	29.6	29.0	30.0	30.5
4H 2H	23.9	25.2	24.4	25.6	26.0	24.1	25.4	24.6	25.8	26.2
3H	25.8	26.9	26.3	27.3	27.8	26.1	27.2	26.6	27.7	28.2
4H	26.8	27.8	27.3	28.3	28.8	27.2	28.2	27.7	28.7	29.2
6H	27.9	28.8	28.4	29.3	29.9	28.4	29.4	29.0	29.9	30.4
8H	28.5	29.3	29.0	29.8	30.4	29.1	29.9	29.6	30.5	31.0
12H	29.2	30.0	29.7	30.5	31.1	29.9	30.7	30.4	31.2	31.8
8H 4H	27.3	28.1	27.8	28.7	29.2	27.6	28.5	28.2	29.0	29.6
6H	28.6	29.3	29.2	29.9	30.5	29.1	29.8	29.7	30.4	31.0
8H	29.4	30.0	30.0	30.6	31.2	29.9	30.6	30.5	31.1	31.8
12H	30.3	30.9	30.9	31.4	32.1	30.9	31.5	31.6	32.1	32.8
12H 4H	27.4	28.2	27.9	28.7	29.3	27.7	28.5	28.3	29.0	29.6
6H	28.8	29.5	29.4	30.1	30.7	29.3	29.9	29.9	30.5	31.1
8H	29.7	30.3	30.3	30.9	31.5	30.2	30.8	30.8	31.4	32.0
Variations with the observer position at spacings(CIE Pub.117):										
S = 1.0H	+ 0.1 / - 0.1					+ 0.1 / - 0.1				
1.5H	+ 0.2 / - 0.3					+ 0.2 / - 0.2				
2.0H	+ 0.1 / - 0.3					+ 0.1 / - 0.2				

CIE Pub.117, 103.4 lm Total Lamp Luminous Flux Correct (8log(F/F0) = -7.9)
 Area: 0.01 m2

C Range: 0 - 360DEG
 C Interval: 22.5DEG
 Test Speed: HIGH
 Temperature:25.3°C
 Operators:DAMIN
 Test Date:2024-04-26

γ Range: 0 - 180DEG
 γ Interval: 5.0DEG
 Test System:EVERFINE GO-2000B_V1 SYSTEM V2.00.473
 Humidity:65.0%
 Test Distance:9.401m [K=1.0000]
 Remarks:

UTILIZATION FACTORS TABLE

Test:U:220.36V I:0.0727A P:5.3616W PF:0.3345 Freq:50.00Hz Lamp Flux:103.42x1 lm		
NAME:	TYPE:	WEIGHT:
SPEC.:	DIM.:	SERIAL No.:
MFR.: EVERFINE	SUR.:	Shielding Angle:

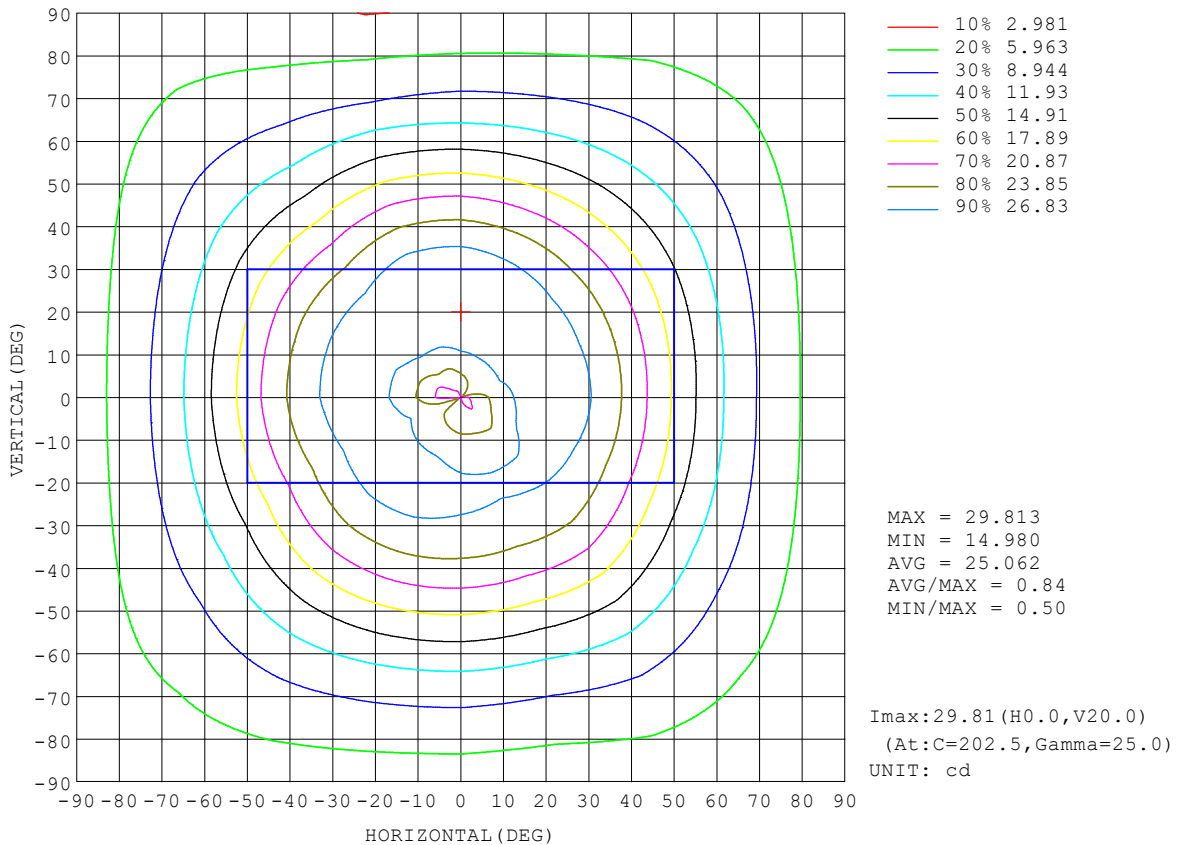
REFLECTANCE										
Ceiling	0.8	0.8	0.8	0.7	0.7	0.7	0.5	0.5	0.5	0
Walls	0.7	0.5	0.3	0.7	0.5	0.3	0.7	0.5	0.3	0
Working plane	0.2	0.2	0.2	0.2	0.2	0.2	0.2	0.2	0.2	0
ROOM INDEX	UTILIZATION FACTORS (PERCENT) $k(RI) \times RCR = 5$									
k = 0.60	53	41	34	52	41	34	51	40	34	27
0.80	63	50	43	61	50	43	59	49	42	35
1.00	71	59	51	69	58	51	66	59	50	42
1.25	78	66	58	76	65	58	72	63	57	48
1.50	83	72	64	81	70	63	77	68	62	53
2.00	90	80	72	87	78	71	83	75	69	60
2.50	94	85	78	91	83	76	86	79	74	64
3.00	97	89	83	94	87	81	89	83	78	67
4.00	102	95	89	98	92	87	93	88	83	72
5.00	104	98	93	101	96	91	95	91	87	75
ROOM INDEX	UF(total)									Direct
According to DIN EN 13032-2 2004			Suspended				SHRNOM = 1.25			

C Range: 0 - 360DEG
 C Interval: 22.5DEG
 Test Speed: HIGH
 Temperature:25.3°C
 Operators:DAMIN
 Test Date:2024-04-26

γ Range: 0 - 180DEG
 γ Interval: 5.0DEG
 Test System:EVERFINE GO-2000B_V1 SYSTEM V2.00.473
 Humidity:65.0%
 Test Distance:9.401m [K=1.0000]
 Remarks:

ISOCANDELA DIAGRAM

Test:U:220.36V I:0.0727A P:5.3616W PF:0.3345 Freq:50.00Hz Lamp Flux:103.42x1 lm		
NAME:	TYPE:	WEIGHT:
SPEC.:	DIM.:	SERIAL No.:
MFR.: EVERFINE	SUR.:	Shielding Angle:

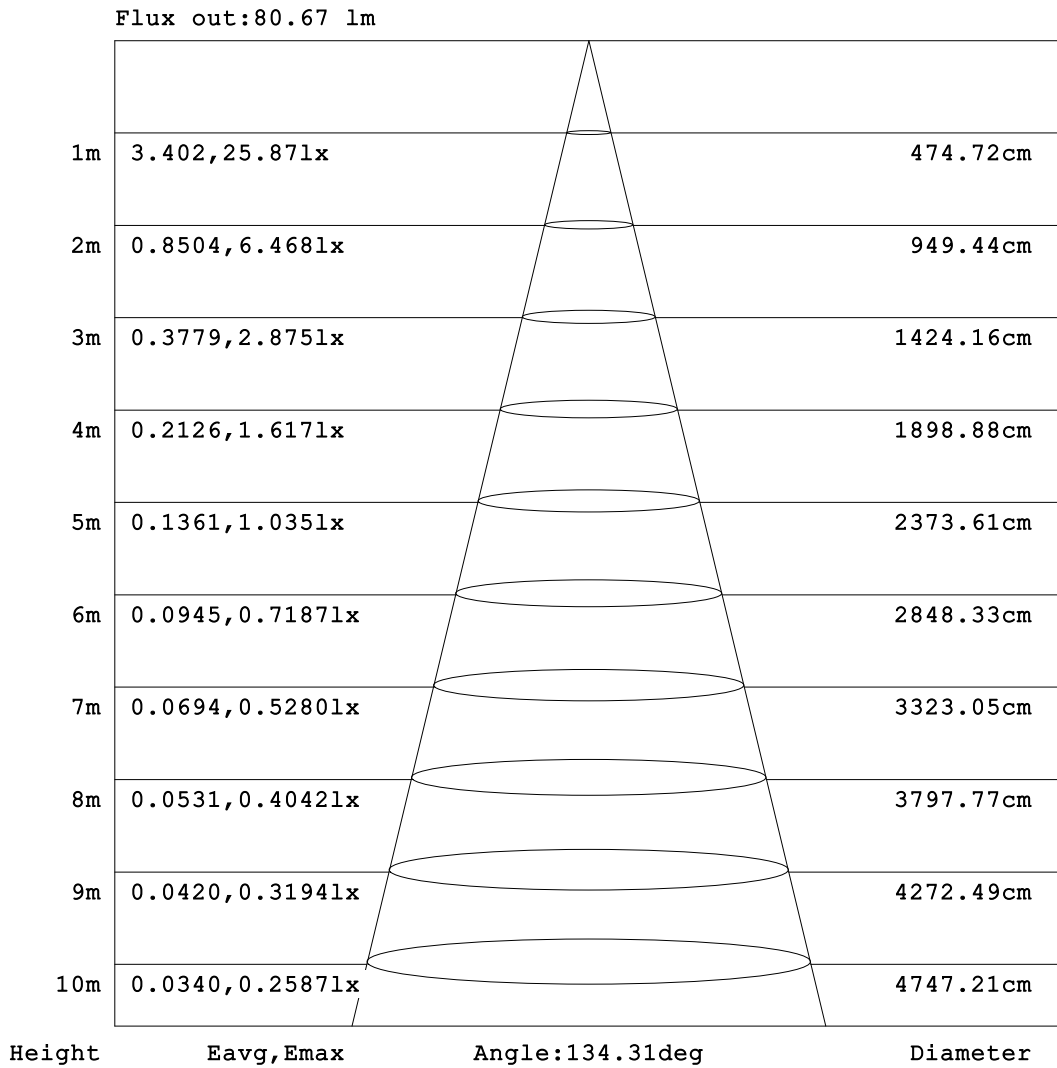


C Range: 0 - 360DEG
 C Interval: 22.5DEG
 Test Speed: HIGH
 Temperature: 25.3°C
 Operators: DAMIN
 Test Date: 2024-04-26

γ Range: 0 - 180DEG
 γ Interval: 5.0DEG
 Test System: EVERFINE GO-2000B_V1 SYSTEM V2.00.473
 Humidity: 65.0%
 Test Distance: 9.401m [K=1.0000]
 Remarks:

AAI Figure

Test:U:220.36V I:0.0727A P:5.3616W PF:0.3345 Freq:50.00Hz Lamp Flux:103.42x1 lm		
NAME:	TYPE:	WEIGHT:
SPEC.:	DIM.:	SERIAL No.:
MFR.: EVERFINE	SUR.:	Shielding Angle:



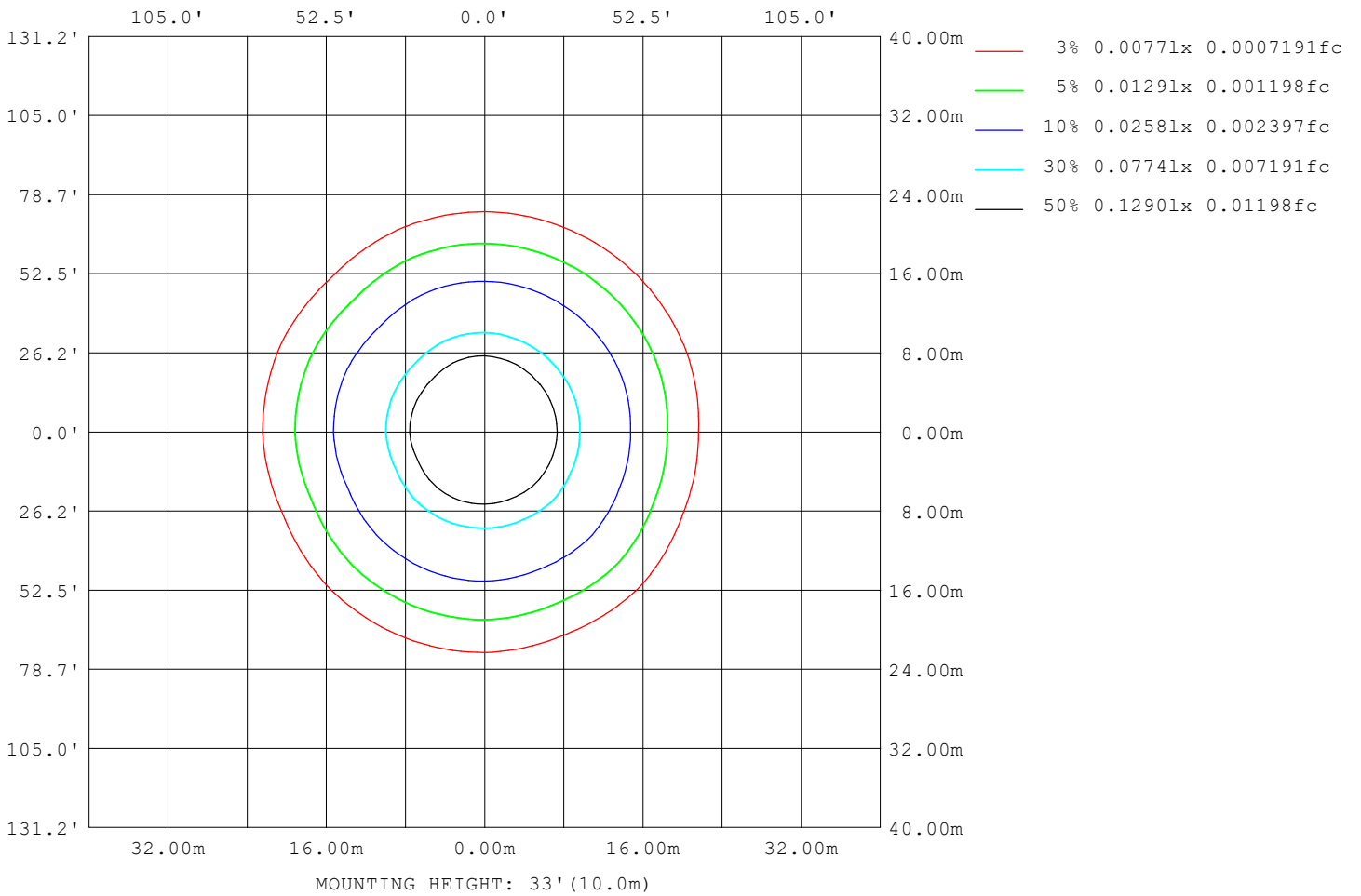
Note: The Curves indicate the illuminated area and the average illumination when the luminaire is at different distance.

C Range: 0 - 360DEG
 C Interval: 22.5DEG
 Test Speed: HIGH
 Temperature: 25.3°C
 Operators: DAMIN
 Test Date: 2024-04-26

γ Range: 0 - 180DEG
 γ Interval: 5.0DEG
 Test System: EVERFINE GO-2000B_V1 SYSTEM V2.00.473
 Humidity: 65.0%
 Test Distance: 9.401m [K=1.0000]
 Remarks:

ISOLUX DIAGRAM

Test:U:220.36V I:0.0727A P:5.3616W PF:0.3345 Freq:50.00Hz Lamp Flux:103.42x1 lm		
NAME:	TYPE:	WEIGHT:
SPEC.:	DIM.:	SERIAL No.:
MFR.: EVERFINE	SUR.:	Shielding Angle:



C Range: 0 - 360DEG
 C Interval: 22.5DEG
 Test Speed: HIGH
 Temperature:25.3°C
 Operators:DAMIN
 Test Date:2024-04-26

γ Range: 0 - 180DEG
 γ Interval: 5.0DEG
 Test System:EVERFINE GO-2000B_V1 SYSTEM V2.00.473
 Humidity:65.0%
 Test Distance:9.401m [K=1.0000]
 Remarks:

LED Avg.L Report

Test:U:220.36V I:0.0727A P:5.3616W PF:0.3345 Freq:50.00Hz Lamp Flux:103.42x1 lm		
NAME:	TYPE:	WEIGHT:
SPEC.:	DIM.:	SERIAL No.:
MFR.: EVERFINE	SUR.:	Shielding Angle:

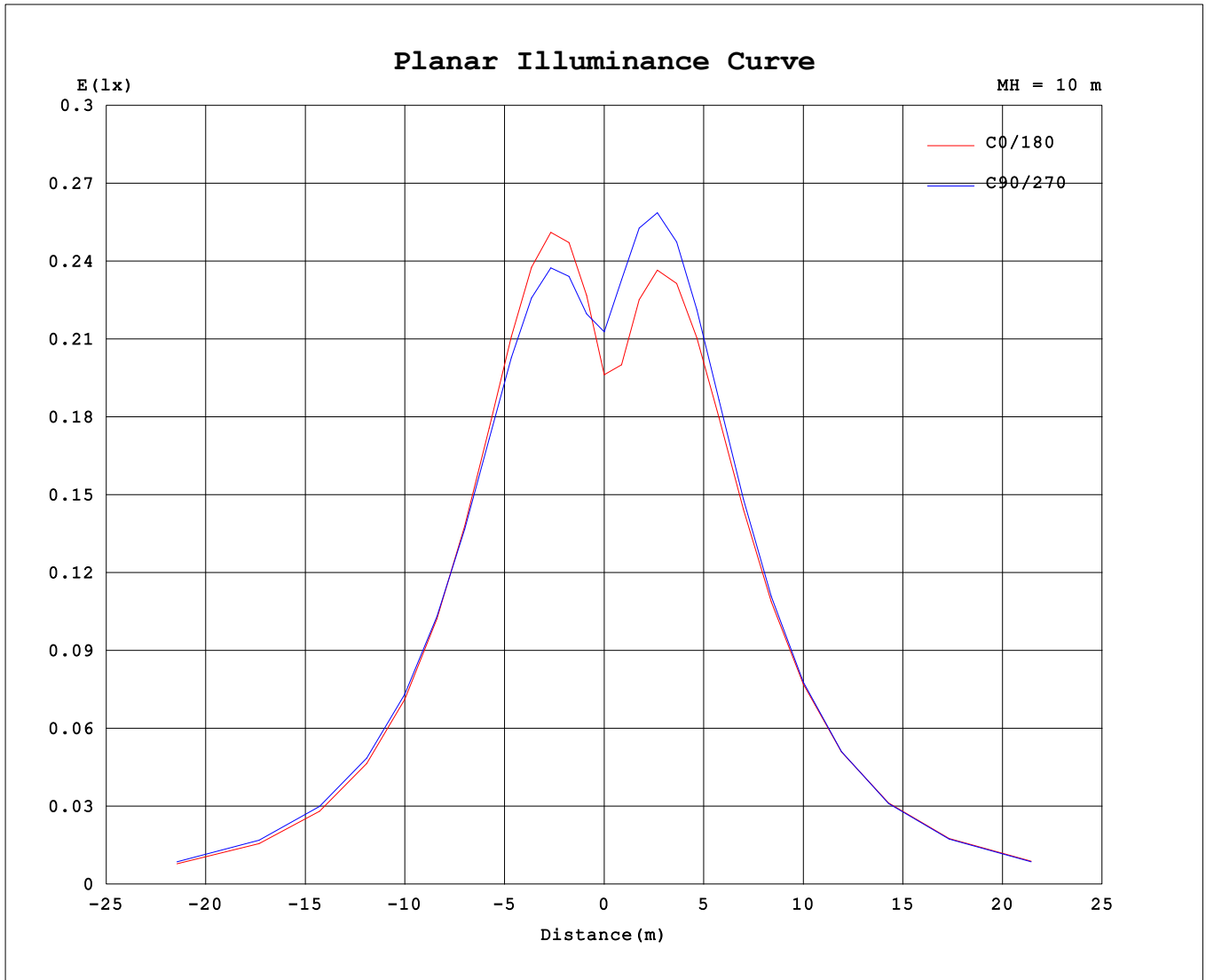
AvgL	cd/m2
L_0~180 (65) av	2876
L_0~180 (75) av	3219
L_0~180 (85) av	6346
L_90~270 (65) av	2747
L_90~270 (75) av	3099
L_90~270 (85) av	5684
L_45 (65) av	2673
L_45 (75) av	3031
L_45 (85) av	5987

Standard: GB/T 29293-2012

C Range: 0 - 360DEG
 C Interval: 22.5DEG
 Test Speed: HIGH
 Temperature:25.3°C
 Operators:DAMIN
 Test Date:2024-04-26

γ Range: 0 - 180DEG
 γ Interval: 5.0DEG
 Test System:EVERFINE GO-2000B_V1 SYSTEM V2.00.473
 Humidity:65.0%
 Test Distance:9.401m [K=1.0000]
 Remarks:

Planar Illuminance Curve



C Range: 0 - 360DEG
 C Interval: 22.5DEG
 Test Speed: HIGH
 Temperature: 25.3°C
 Operators: DAMIN
 Test Date: 2024-04-26

γ Range: 0 - 180DEG
 γ Interval: 5.0DEG
 Test System: EVERFINE GO-2000B_V1 SYSTEM V2.00.473
 Humidity: 65.0%
 Test Distance: 9.401m [K=1.0000]
 Remarks:

LUMINOUS DISTRIBUTION INTENSITY DATA

Test:U:220.36V I:0.0727A P:5.3616W PF:0.3345 Freq:50.00Hz Lamp Flux:103.42x1 lm		
NAME:	TYPE:	WEIGHT:
SPEC.:	DIM.:	SERIAL No.:
MFR.: EVERFINE	SUR.:	Shielding Angle:

Table--1

UNIT: cd

C (DEG) \ γ (DEG)	0	22.5	45	67.5	90	112.5	135	157.5	180	202.5	225	247.5	270	292.5	315	337.5			
0	21.3	21.3	21.3	21.3	21.3	21.3	21.3	21.3	21.3	21.3	21.3	21.3	21.3	21.3	21.3	21.3			
5	24.9	24.8	22.9	23.0	22.3	21.9	21.5	21.6	22.0	22.5	24.2	23.6	23.6	23.3	22.7	22.0			
10	28.1	28.0	25.8	25.5	24.6	24.0	23.0	22.5	25.6	26.4	27.5	26.8	26.5	25.7	24.4	23.1			
15	30.3	30.2	28.1	27.4	26.4	25.8	24.6	23.6	28.5	29.3	30.0	29.3	28.8	27.5	25.6	24.0			
20	31.1	31.1	29.3	28.3	27.3	26.7	25.4	24.1	30.3	31.0	31.2	30.8	29.9	28.2	26.1	24.4			
25	30.8	30.7	29.5	28.2	27.3	26.6	25.5	23.9	30.7	31.4	31.1	31.0	29.8	28.0	25.7	24.1			
30	29.4	29.5	28.7	27.4	26.5	25.8	24.6	23.1	30.1	30.8	30.1	30.2	28.8	26.9	24.7	23.2			
35	27.3	27.5	27.2	25.8	25.0	24.3	23.2	21.7	28.5	29.2	28.2	28.4	27.0	25.2	23.1	21.7			
40	24.7	25.0	25.1	23.8	23.0	22.3	21.3	19.8	26.3	26.9	25.8	26.1	24.7	23.0	21.1	19.8			
45	21.9	22.3	22.6	21.4	20.8	20.1	19.1	17.7	23.7	24.2	23.0	23.3	22.1	20.5	18.9	17.7			
50	19.0	19.4	19.9	18.9	18.4	17.8	16.8	15.5	20.9	21.3	20.1	20.4	19.3	18.0	16.6	15.5			
55	16.3	16.6	17.3	16.3	15.9	15.4	14.5	13.4	18.0	18.4	17.2	17.4	16.5	15.4	14.3	13.4			
60	13.7	14.1	14.7	13.9	13.7	13.2	12.4	11.4	15.4	15.7	14.5	14.7	14.0	13.1	12.2	11.3			
65	11.4	11.8	12.4	11.7	11.6	11.2	10.5	9.59	12.9	13.1	12.0	12.2	11.6	11.0	10.2	9.52			
70	9.44	9.78	10.35	9.79	9.80	9.38	8.80	7.99	10.72	10.95	9.99	9.56	9.55	9.09	8.56	7.93			
75	7.78	8.09	8.62	8.17	8.23	7.87	7.37	6.66	8.88	9.08	8.24	7.93	7.81	7.51	7.14	6.58			
80	6.34	6.62	7.12	6.74	6.86	6.55	6.13	5.48	7.29	7.46	6.72	6.21	6.17	6.12	5.89	5.40			
85	5.14	5.35	5.77	5.46	5.61	5.34	4.98	4.46	5.92	6.03	5.37	4.19	4.30	4.22	4.75	4.38			
90	4.36	4.46	4.70	4.49	4.64	4.42	4.09	3.62	4.77	4.85	4.37	3.04	3.25	3.17	3.89	3.61			
95	3.91	3.55	3.44	3.46	3.60	3.40	2.87	2.87	3.92	3.66	2.82	2.37	2.65	2.60	2.75	2.85			
100	3.10	2.68	2.42	2.95	2.88	2.94	2.01	2.08	2.83	2.70	1.85	1.91	2.24	2.20	1.95	2.14			
105	2.73	2.12	1.93	2.24	2.30	2.22	1.65	1.57	2.39	2.11	1.43	1.49	1.96	1.91	1.54	1.74			
110	2.58	1.82	1.67	2.07	2.11	2.03	1.46	1.26	2.28	1.74	1.16	1.34	1.64	1.54	1.32	1.47			
115	2.45	1.62	1.39	1.86	1.97	1.83	1.24	1.11	2.21	1.50	0.70	1.14	1.39	1.32	1.04	1.32			
120	2.24	1.38	0.88	1.63	1.82	1.66	0.57	0.87	2.00	1.20	0.24	0.79	1.15	1.03	0.55	1.12			
125	2.03	0.77	0.52	0.93	1.60	1.32	0.37	0.65	1.65	0.34	0.27	0.16	0.78	0.22	0.33	0.72			
130	1.49	0.35	0.42	1.24	1.03	1.09	0.67	0.65	1.49	0.39	0.19	0.14	0.11	0.17	0.19	0.24			
135	1.29	0.42	0.30	1.55	1.69	1.73	0.75	0.73	1.08	0.39	0.19	0.13	0.13	0.15	0.14	0.27			
140	0.52	0.52	0.27	0.85	1.83	1.43	0.87	0.25	0.87	0.34	0.19	0.13	0.13	0.13	0.14	0.34			
145	0.55	0.78	0.20	0.28	1.29	0.84	0.36	0.18	0.56	0.39	0.19	0.13	0.14	0.13	0.14	0.51			
150	1.12	1.03	0.18	0.20	0.48	0.62	0.18	0.18	1.23	0.63	0.20	0.13	0.16	0.13	0.15	0.97			
155	0.69	0.27	0.23	0.30	0.34	0.28	0.18	0.21	0.82	0.26	0.21	0.13	0.17	0.13	0.15	0.41			
160	0.30	0.29	0.33	0.33	0.29	0.31	0.24	0.24	0.29	0.25	0.21	0.13	0.17	0.13	0.15	0.21			
165	0.30	0.27	0.33	0.28	0.31	0.26	0.26	0.20	0.27	0.25	0.21	0.14	0.17	0.13	0.15	0.21			
170	0.26	0.23	0.25	0.21	0.22	0.18	0.20	0.17	0.22	0.25	0.22	0.14	0.17	0.13	0.15	0.19			
175	0.22	0.23	0.22	0.21	0.20	0.19	0.18	0.17	0.22	0.22	0.22	0.15	0.17	0.14	0.15	0.18			
180	0.22	0.23	0.22	0.21	0.20	0.19	0.18	0.17	0.22	0.22	0.22	0.16	0.17	0.16	0.15	0.18			

C Range: 0 - 360DEG
 C Interval: 22.5DEG
 Test Speed: HIGH
 Temperature:25.3°C
 Operators:DAMIN
 Test Date:2024-04-26

γ Range: 0 - 180DEG
 γ Interval: 5.0DEG
 Test System:EVERFINE GO-2000B_V1 SYSTEM V2.00.473
 Humidity:65.0%
 Test Distance:9.401m [K=1.0000]
 Remarks: